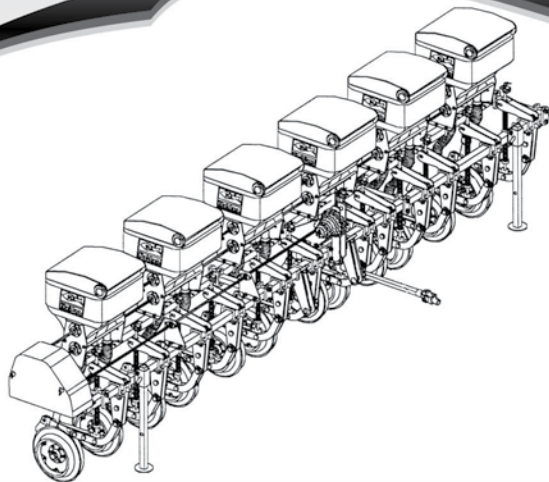


# ACD-N

**Mounted Row Grop Fertilizer  
for Conservation Tillage**



[www.baldan.com.br](http://www.baldan.com.br)

**Instruction Manual**



# INTRODUCTION

**W**e thank you for the preference and congratulate your excellent choice in acquiring an implement of outstanding quality, manufactured in accordance with the advanced technology of **BALDAN IMPLEMENTOS AGRÍCOLAS S/A**.

This manual will assist you, in proceeds necessities, since when you bought until the operational proceeds application, security and maintenance.

The **BALDAN** guarantees that deliver this implement to the dealer, working properly, and in perfect conditions.

The dealers it's under the responsibility to keep the protection and conservation while keep the implement in your stock, and than, to assembly, tighten, lubrication and overhaul.

On time of the technical deliver, the dealer must to have conducted the user customer about the manutentation, safety, and your obligations in a possible technical assistance, the obligation to see the warranty terms and read the instruction manual. Any solicitation of warranty, please contact our Baldan technical service, by your Baldan dealer that you bought our implement.

Reaffirm the necessity to read carefully of warranty certificate and note all of items from this manual, therefore you will increase the working life of your equipment.



# ***Instruction Manual***



# INDEX

<b>01. Safety standards</b> .....	<b>4 - 8</b>
<b>02. Components</b> .....	<b>9</b>
<b>03. Technical especifications</b> .....	<b>10</b>
<b>04. Assembly</b> .....	<b>11 - 12</b>
<b>05. Coupling</b> .....	<b>13 - 16</b>
<b>06. Adjustments</b>	
<i>How to stretch the chain</i> .....	17
<i>Position of fertilizer tanks</i> .....	17
<i>Adjustment the spacing between discs</i> .....	17
<i>Double disc depth</i> .....	18
<i>Fertilizer adjustment</i> .....	19-20
<b>07. Practical calculation for fertilizer distribution</b> .....	<b>21</b>
<b>08. Operations</b>	
<i>Fertilization system</i> .....	22-24
<b>09. Maintenance</b> .....	<b>25</b>
<i>Lubrication</i> .....	25
<i>Table of equivalent and greases</i> .....	25
<b>10. Lubrication points</b> .....	<b>26</b>
<i>How to tighten the chain</i> .....	26
<b>11. Cleaning</b> .....	<b>27</b>
<i>Cleaning the fertilizer tanks</i> .....	27
<b>12. Storage</b> .....	<b>27</b>
<b>13. Identification</b> .....	<b>28</b>
<i>Notes:</i> .....	30

## 01. SAFETY STANDARDS

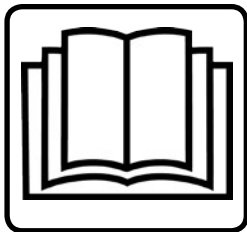


*THIS SYMBOL INDICATES IMPORTANT SAFETY WARNING. WHENEVER YOU FIND IT IN THIS HANDBOOK, CAREFULLY READ THE MESSAGE THAT FOLLOWS AND BE AWARE OF THE POSSIBILITY OF PERSONAL INJURY.*



### ATTENTION

- *Read the instruction manual carefully, so you can learn the recommended safety practices.*



### ATTENTION

- *Only start operating the tractor when properly seated and with the safety belt fastened.*



### ATTENTION

- *Do not transport people on the tractor and not in or on the equipment.*





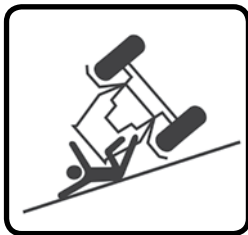
## ATTENTION

- *Do not operate the tractor if the front is light. With a tendency to rise, add weights on the front of the tractor or front wheels.*



## ATTENTION

- *There are risks of serious injury by tumbling when working on slopes.*
- *Do not use excessive speed.*



## ATTENTION

- *Before performing any maintenance on your equipment, make sure it is turned off. Avoid getting hit.*



*ALCOHOL OR DRUGS CAN GENERATE SOME LOSS OF REFLEXES AND CHANGE THE PHYSICAL CONDITIONS OF THE OPERATOR, SO, NEVER OPERATE THIS EQUIPMENT UNDER USE OF THESE SUBSTANCES.*



## ATTENTION

- *Keep yourself away from the active elements of the machine (discs), they are sharp and can cause accidents.*
- *When carrying any service on discs, use safety gloves on hands.*



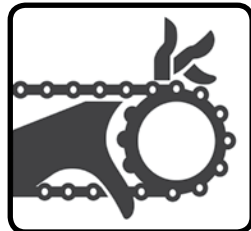
## ATTENTION

- *There is risk of possible injury to the mower's operator and other people during cutting operations for the following reasons:*
- *Contact of body with rotating blades.*
- *Contact with transmission shafts and rotary shafts.*



## ATTENTION









- *Do not operate the seed drill if the transmission hoods are not properly fixed.*
- *Only remove the hoods to make the replacement of gears, put them back immediately.*
- *When doing any work in the machine transmission, turn the ratchets off.*
- *Do not make adjustments with the machine in motion.*













*THE MISMANAGEMENT OF THIS EQUIPMENT CAN RESULT IN SERIOUS OR FATAL ACCIDENTS. BEFORE PLACING THE EQUIPMENT IN OPERATION, CAREFULLY READ THE INSTRUCTIONS IN THIS HANDBOOK. MAKE SURE THAT THE PERSON RESPONSIBLE FOR THE OPERATION IS INSTRUCTED ON THE PROPER AND SAFE HANDLING, IF HE HAS READ AND UNDERSTOOD THE HANDBOOK OF THIS PRODUCT.*

- 01-  When operating the equipment, do not allow people to stay very close or on it.
- 02-  In making any assembling and disassembling service in the discs, always use safety gloves.
- 03-  By turning the tractor engine on, be properly seated in the driver's seat and aware of complete knowledge of the proper and safe handling of both the tractor and mower. Always place the exchange lever in neutral position, turn off the command PTO.
- 04-  Do not run the engine indoors or without adequate ventilation, because the exhaust fumes are harmful to health.
- 05-  Do not wear loose clothing as they can become entangled in moving parts.
- 06-  When maneuvering the tractor to the implement hitch, make sure that there is plenty of room and that there is nobody very close, always do the maneuvers in low gear and be prepared to brake in emergency situations.
- 07-  Do not make adjustments with the implement in operation.
- 08-  When working on slopes, proceed with caution when trying to maintain the necessary stability. In case of early imbalance, reduce the acceleration, turn the tractor wheels to the side of the terrain slope.

- 09-  Always drive the tractor at speeds compatible with safety, especially when working on uneven ground or slopes, always keep the tractor engaged.
- 10-  When driving the tractor on roads, keep the brake pedals connected and use of safety signs.
- 11-  Do not operate the tractor if its front is light. If there is a tendency to rise, add weights on the front or front wheels.
- 12-  Leaving the tractor, put the selector lever in neutral and pull the parking brake.
- 13-  Alcoholic beverages and some medications can cause loss of reflexes and change the physical conditions of the operator. Therefore, never operate this equipment, under the influence of these substances.
- 14-  Read or explain all the procedures above to the operator who cannot read.



# ACD - DOUBLE-DISC COVERAGE FERTILIZER

## 02. COMPONENTS

- 01 - Frame
- 02 - Support
- 03 - Double disk coupling
- 04 - Complete double disc
- 05 - Fertilizer tank
- 06 - Stirring shaft (Opcional)
- 07 - Fertilizer feeder shaft
- 08 - Propeller shaft
- 09 - Shaft drive chain
- 10 - Reduction gear
- 11 - Set of gears
- 12 - Shaft
- 13 - Hydraulic hitch
- 14 - 3 point hitch
- 15 - Conductor of fertilizer
- 16 - Rod spring pressure of the disc

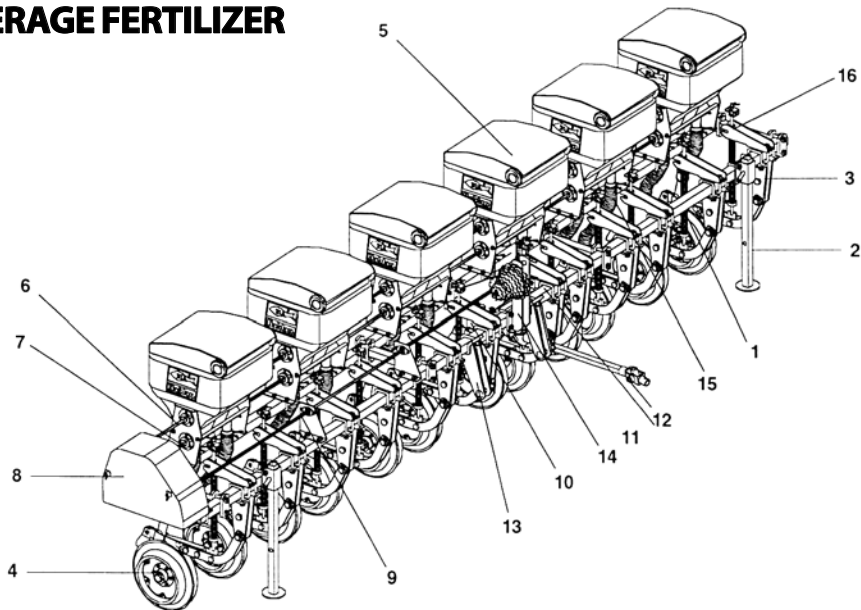


Figure 1

### 03. TECHNICAL SPECIFICATIONS

Tabela 2

Model	Nr of Discs	Nr of Tanks	Frame width (mm)	Clearance (mm)	Tank capacity (L)	Approx. weight (Kg)	Fertilizer discharge (Kg/ha)	Required tractor power (HP)
ACD-N	2	2	2250	800	100	324	37 a 1680	51 - 54
ACD-N	4	2	2250	800	100	396	37 a 1680	51 - 66
ACD-N	4	2	3000	800	100	435	37 a 1680	57 - 66
ACD-N	4	2	3300	800	100	450	37 a 1680	61 - 73
ACD-N	4	4	3300	800	100	425	37 a 1680	61 - 73
ACD-N	4	2	3650	800	100	461	37 a 1680	61 - 73
ACD-N	4	4	3650	800	100	530	37 a 1680	75 - 85
ACD-N	4	4	5500	800	100	560	37 a 1680	75 - 85
ACD-N	5	5	4200	800	100	617	37 a 1680	66 - 75
ACD-N	5	5	4500	800	100	625	37 a 1680	66 - 75
ACD-N	5	5	5500	800	100	658	37 a 1680	75 - 85
ACD-N	6	3	3000	800	100	560	37 a 1680	75 - 85
ACD-N	6	3	3300	800	100	577	37 a 1680	75 - 85
ACD-N	6	3	3650	800	100	588	37 a 1680	75 - 85
ACD-N	6	3	4300	800	100	611	37 a 1680	75 - 85
ACD-N	6	6	4500	800	100	670	37 a 1680	75 - 85
ACD-N	6	3	5500	800	100	652	37 a 1680	75 - 85
ACD-N	6	6	5500	800	100	702	37 a 1680	75 - 85
ACD-N	8	4	3300	800	100	655	37 a 1680	85 - 91
ACD-N	8	4	3650	800	100	690	37 a 1680	85 - 91
ACD-N	10	5	4300	800	100	814	37 a 1680	85 - 91
ACD-N	10	5	4500	800	100	822	37 a 1680	85 - 91
ACD-N	10	5	5500	800	100	855	37 a 1680	85 - 91
ACD-N	12	6	4500	800	100	900	37 a 1680	85 - 91
ACD-N	12	6	5500	800	100	933	37 a 1680	85 - 91
ACD-N	14	7	5500	800	100	1043	37 a 1680	91 - 100

*The Baldan reserves the right to change the specifications of this product without prior notice.*

*The technical specifications are approximate and valid in normal working conditions.*



## 04. ASSEMBLY

- 01 - Check the parts with the parts list that is inside the packing box.
- 02 - The simplest and safest process to assemble the grower is the use of racks or the like.

### ASSEMBLING THE GEARBOX

- 03 - Attach on the plate (1) gearbox (2) using the screws (3). Place chain (4) between the gears (5 and 6), tensioning the same by sliding the gearbox (2), then tighten the screws (3).

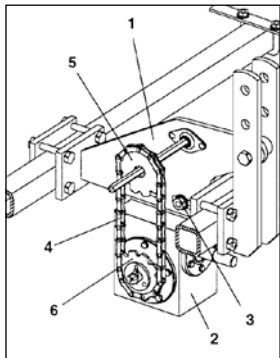


Figure 2

### ATTACHING THE SUPPORT

- 04 - Assemble the supports (1) on the ends of the frame (2) by fixing with clamps (3) and nuts (4).

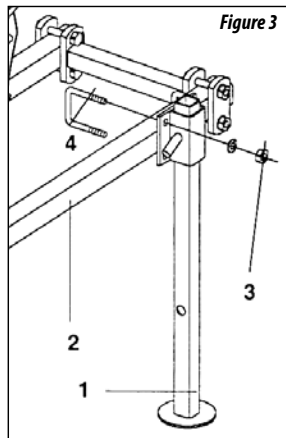


Figure 3

### ATTACHING THE HITCH

- Attach in the frame (1) the lower hitch brackets (2) with clamps (3), washer and nut (4). The dimension between the lower hitches varies according to the category of the tractor that will pull the Fertilizer, these dimensions should be:
- 05 - Tractor Cat I = 685mm
  - 06 - Tractor Cat II = 826mm

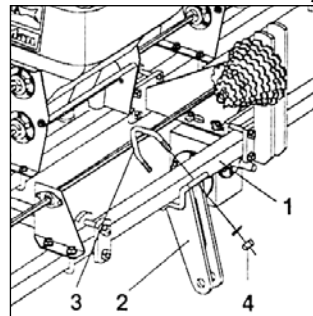


Figure 4

## ASSEMBLY OF DOUBLE DISC

- 07 - The spacing between discs varies according to the type of crop and fertilization system.
- 08 - Make marks on the frame (1) which will be mounted disks, then place the discs support (2) fixing with clamps (3) washers and nuts (4).
- Observe the assembly of all models in figures 13 and 14.
- 09 - Attach the rod support item (5) on the frame (1) with clamp item (6), washer and nut item (7).
- 10 - Input the oversleeves (8) the outputs of deposits, fixing them with the lock (9) and housing double disc (10).

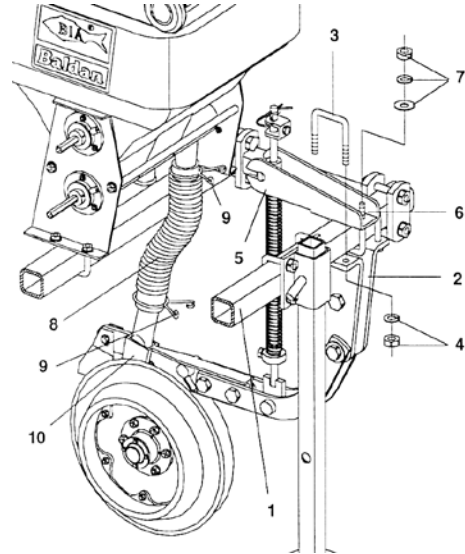


Figure 5



*Make the connection of hoses between each tank outlet up to the nearest double disc, preventing them from getting bent or folded, as shown in figure 5.*

## 05. COUPLING

- Before coupling the fertilizer, make sure the tractor is ready for operation as follows:
  - 01 - Make sure the tractor is equipped with front counterweights;
  - 02 - Place weights on the wheels as the tractor manual specifies.
  - 03 - Engage the tractor's left arm inferior in support "A" of the fertilizer.
  - 04 - Engage the tractor 3 point in support "B" of the fertilizer.
  - 05 - Finally and with the aid of the height adjustment lever "D", engage the lower right arm of the tractor in support "C" of the fertilizer.



### ATTENTION

*To coupling the fertilizer, find a safe place and easily accessible, always use low gear and low acceleration.*

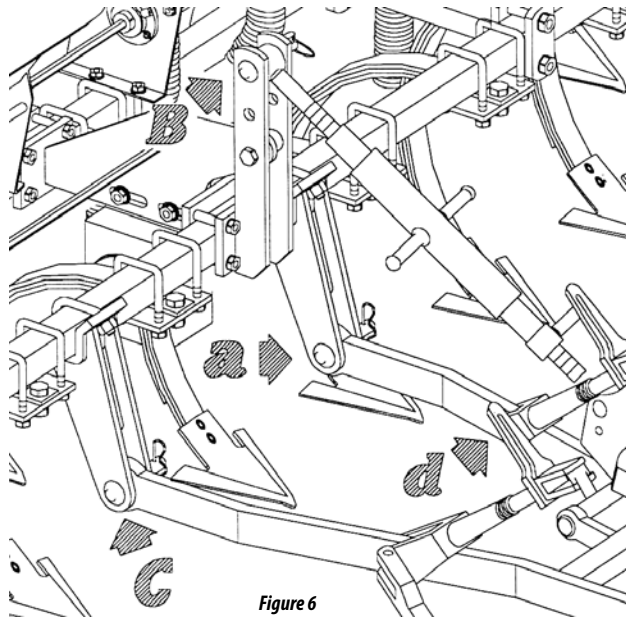


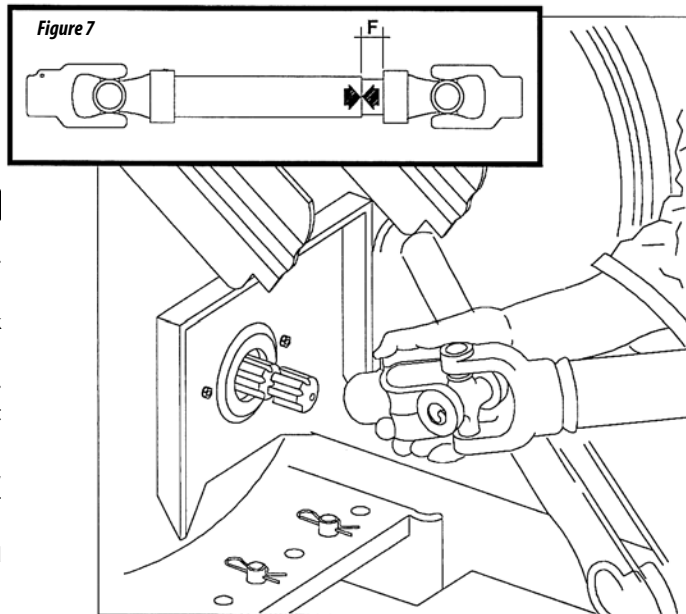
Figure 6

## COUPLING ON THE TRACTOR PTO

- 06 - After hitch fertilizer in 3 points of the tractor, check the looseness "F" in telescopic shaft, which should be at least 20mm. If there is no slack, adjust the length of the driveshaft.

## ADJUST THE LENGTH OF THE DRIVESHAFT

- 07 - To adjust the length, cut proportionally the two parts of the propeller shaft.
- 08 - Wipe burrs off.
- 09 - When assembling the propeller shaft, observe the alignment of the fork inner ears to avoid vibration and prolong the life of your implement.
- 10 - Connect the propeller shaft to the gearbox, and use the key and cotter pin.
- 11 - When connecting the propeller shaft to the tractor PTO, the tractor must be with the engine off and the parking brake applied.
- 12 - Connect the flange (cooled side) on the output shaft of the tractor PTO, as Figure 07. Note that the coupling will only be completed when the latch loses.
- 13 - Before connecting the driveshaft, make sure the propeller shaft is free and with the cotter pin.





## CENTRALIZATION OF FERTILIZER

- To centralize fertilizer in relation to the longitudinal axis of the tractor, proceed as follows:
  - 14 - Align the top hitch of the fertilizer with 3rd point of the tractor, checking if the distances "D" of the lower arms of the hydraulic are equal in relation to tractor tires as shown in figure 08. The lower arms must be leveled with each other.
  - 15 - The lower arms should be level with each other.

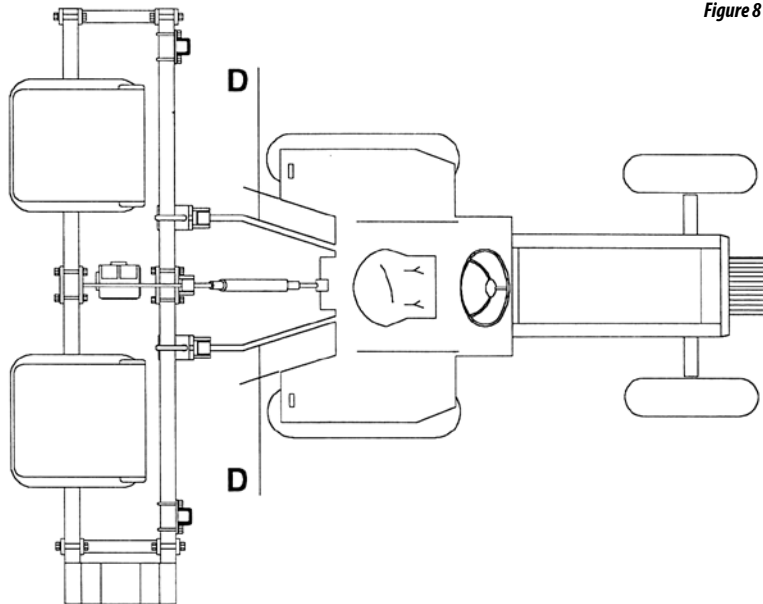


Figure 8

## LEVELING THE FERTILIZER

- To level the grower, proceed as follows:
  - 16 - The tractor must be on flat place, then level the fertilizer in the transverse direction (width) through the lower right arm crank of the hydraulic coupling.
  - 17 - Note, the measures "a" should be equal on both sides.
  - 18 - Longitudinal leveling (length) is made by the arm of the 3rd point. Note that the discs should be parallel to the ground.

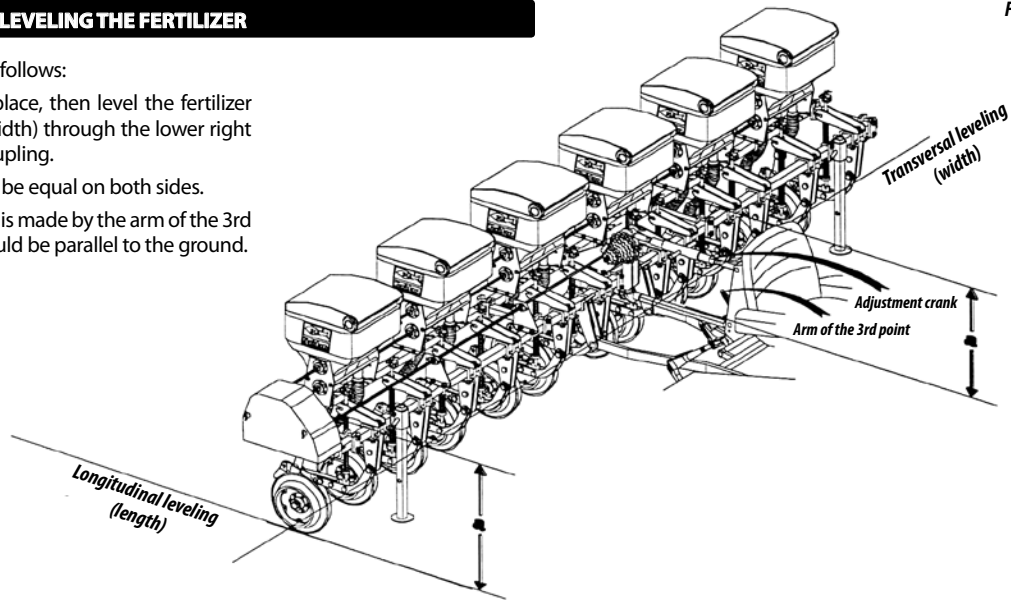


Figure 9

## 06. ADJUSTMENTS

### HOW TO STRETCH THE CHAIN

- 01 - Before starting the settings in fertilizer put support brackets (1).
- 02 - To stretch the chain, loosen the nut of the stretcher and slide it up to the desired tension, then retighten the nut.

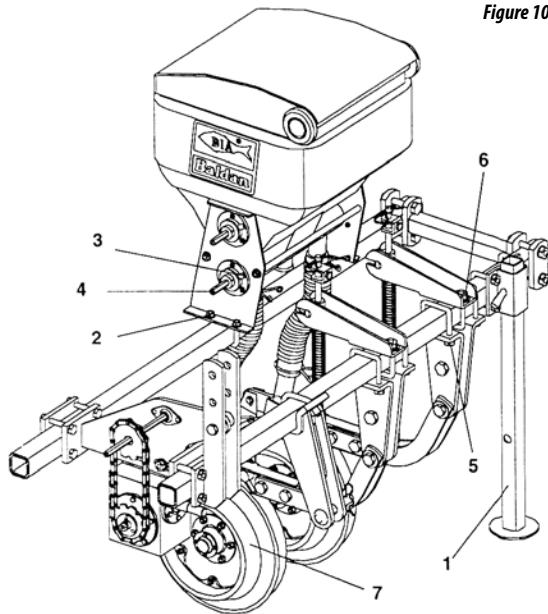
### POSITION OF FERTILIZER TANKS

- 03 - Dependendo do espaçamento entre linhas e da cultura a ser adubada, pode-se modificar a posição dos depósitos, para isso solte as porcas das braçadeiras (2), retire o parafuso de trava (3) do eixo (4).
- 04 - Slide the tanks on the frame and the shaft to the desired position.

### ADJUSTMENT THE SPACING BETWEEN DISCS

- 05 - The spacing between discs must be adjusted according to the type of crop to be worked.
- 06 - To adjust the spacing between lines, loosen the nuts clamps (5) of the discs support also the nuts clamps (6) of the rod spring. Move the full discs (7) to the desired position. Tighten the nuts clamps.

Figure 10



## DOUBLE DISC DEPTH

- The fertilizer depth adjustment is made by pressure of springs on the double disc. This adjustment is made through the bushings as follows:

07 - To increase the depth, loosen the screw (1) and place the bushing (2) upwards;

08 - To decrease depth, place the bushing Item 2 downwards;

09 - To give more pressure on the spring, loosen the screw (3) and put the bushing item (4) upwards.

10 - Always leave a space between the upper bushing (2) and the rod support (5) for line oscillation.

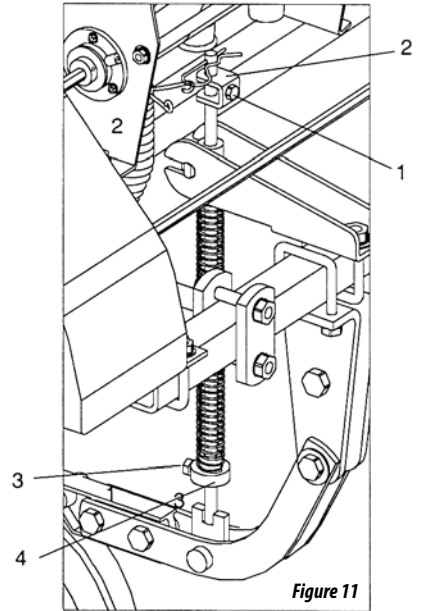


Figure 11



**IMPORTANT**

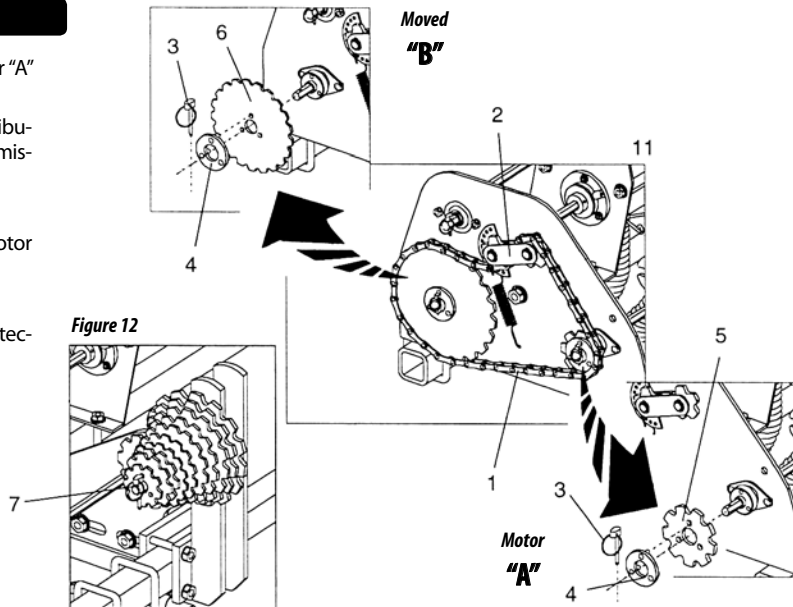
*All disks must have the same setting.*

## FERTILIZER ADJUSTMENT

- The fertilizer adjustment is made by changing the gear motor "A" and moved "B", as follows:
- 11 - Check in table 3 the amount of fertilizer that you want to distribute the corresponding gear ratio and then remove the transmission protection;
  - 12 - Remove the chain (1), moving the tensioner (2);
  - 13 - Remove the latches (3), the lock washers (4) and then motor gears (5) moved (6);
  - 14 - Select the gears which are the support (7);
  - 15 - Replace the motor and moved gears, the locks and also protection of the transmission.

### **ATTENTION**

*Do not operate the fertilizer if the transmission protection is not properly fixed.*



**TABLE OF UREA AND AMMONIUM SULFATE DISTRIBUTION**

**Table 3**

Gears		Grams in 50m per row	Amount in kilogram per hectare in the spacings below						
Motor "A"	Moved "B"		400	450	500	600	700	800	900
8	21	300	150	133	120	100	85	75	67
8	19	333	165	148	132	110	93	83	74
8	17	369	185	164	148	123	105	93	82
8	15	418	209	186	167	139	118	105	93
8	14	450	225	200	180	150	127	113	100
8	13	486	240	216	194	160	136	120	108
8	12	518	260	230	208	173	147	130	115
8	11	572	286	254	227	191	162	143	127
8	10	630	315	280	252	210	179	158	140
8	9	693	347	308	218	182	154	174	154
9	9	796	394	354	315	263	233	197	177
9	8	886	444	394	280	296	251	222	197
10	8	985	493	438	395	329	280	247	219
11	8	1080	543	480	434	362	307	272	240
12	8	1179	592	524	474	395	335	296	262
13	8	1282	641	570	513	427	363	320	285
14	8	1377	691	612	553	460	391	346	306
15	8	1476	740	656	592	493	419	370	328
17	8	1674	839	744	671	560	475	420	372
19	8	1872	937	832	750	625	531	468	416
21	8	2070	1036	920	829	690	587	518	460



To fertilize both sides of the plant at one time, multiply the amount shown in table by two.

**EXAMPLE**

To distribute 111 kg / ha of ammonium sulfate, with spacing of 900 mm, assemble the 8-teeth gears on the 13-teeth reducer on the shaft.

## 07. PRACTICAL CALCULATION FOR FERTILIZER DISTRIBUTION

• To perform the calculation, do the following:

01 - Determine the space between lines;

02 - Knowing the amount of fertilizer to be distributed by Ha.

• *Example: ACD-N with spacing of 900 mm to distribute 115 kg of ammonium sulfate per hectare, use the formula below:*

• *Solve:*

$$X = \frac{E \times Q}{A} \times D$$

$$X = \frac{900 \times 115}{10.000} \times 50$$

$$X = 10,35 \times 50$$

$$X = 517,50 \text{ grams in 50 mts.}$$

*Data:*

*E = Spacing between lines (mm)*

*Q = Amount of fertilizer to be distributed [kg]*

*A = Area to be fertilized [m<sup>2</sup>]*

*D = Distance of 50 meters (test)*

*X = Grams of fertilizer in 50 meters*

## PRACTICAL TEST TO MEASURE THE SEED AND FERTILIZER DISTRIBUTION AMOUNT

01 - For greater accuracy in the fertilizer or seed distribution, do the test to find the amount to be distributed on the planting site, because for each type of soil, there is a different condition.

02 - Check the test distance in the table, we chose 50 linear meters.

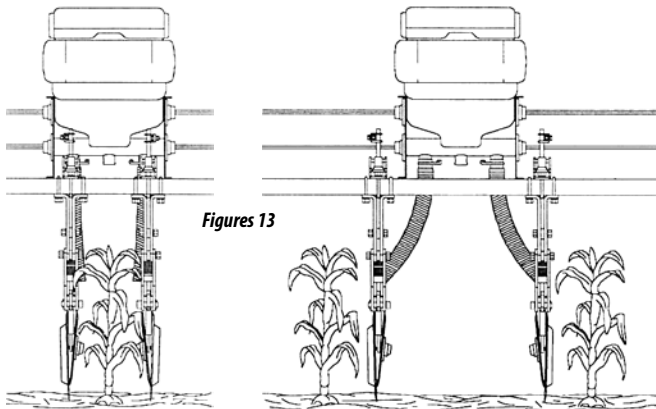
03 - Fill the seed tanks at least halfway. Run at least 10 meters outside the testing area, so that the seeds and fertilizer fill the feeders.

04 - Put containers at the fertilizer output. Move the tractor to the demarcated area always at the same for fertilizing.

05 - After running along the demarcated area, remove the recipient from the fertilizer output and weight it and compared with the table in the second column (grams per line in 50 meters). If necessary, exchange gears.

## 08. OPERATIONS

### FERTILIZATION SYSTEM



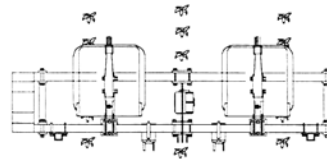
**Figures 13**

*Fertilization system on both sides of the plant*

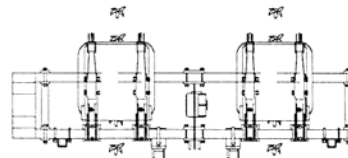
*Fertilization system on one side of the plant*

01 - The figures on the following pages show the assembly and the operation systems for each fertilizer model, which may have other forms of assemblage depending on the type of crop to be cultivated.

**Figures 14**

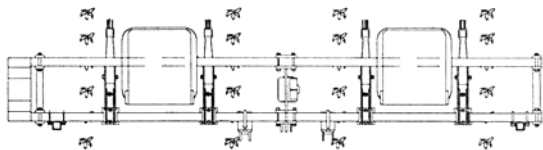


*ACD 2 discs, 2 tanks, frame 2250mm fertilizes one side of the plant*

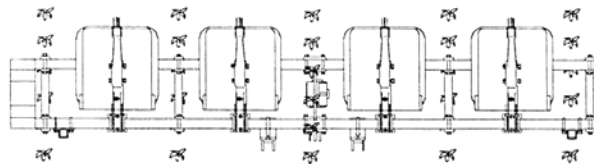


*ACD 4 discs, 2 tanks, frame 2250mm fertilizes both sides of the plant*

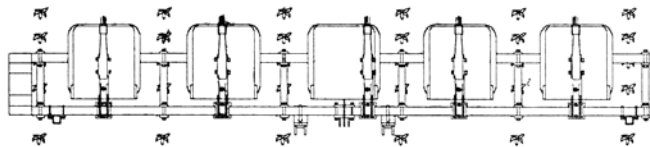




**ACD 4 discs, 2 tanks, frame 2250/3000/3300/3650mm, fertilizes 1 side of the plant**

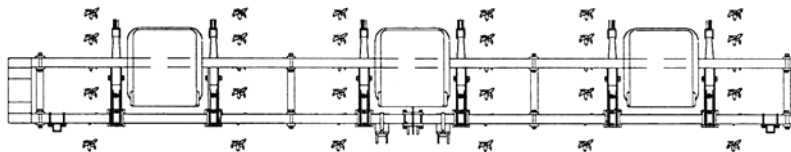


**ACD 4 discs, 4 tanks, frame 2250/3000/3300/3650mm, fertilizes 1 side of the plant**

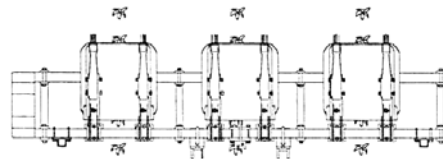


**ACD 5 discs, 5 tanks, frame 4300/4500/5500mm, fertilizes 1 side of the plant**

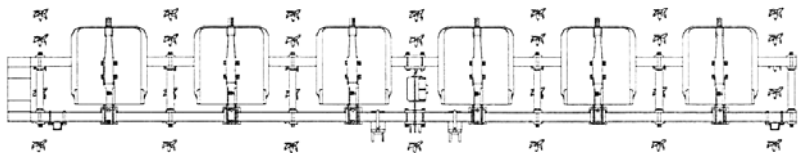
**Figures 14**



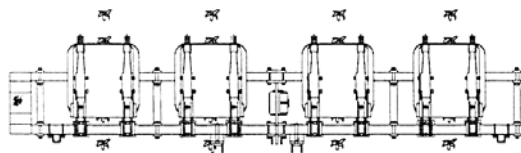
**ACD 6 discs, 3 tanks, frame 3000/3300/3650/4300/4500/5500mm, fertilizes 1 side of the plant**



**ACD 6 discs, 3 tanks, frame 3000/3300/3650/4300mm, fertilizes both sides of the plant**

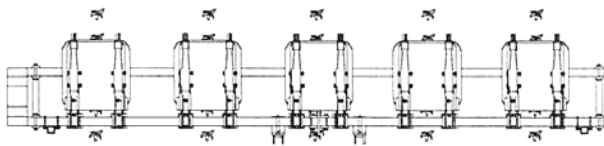


***ACD 6 discs, 6 tanks, frame 4500/5500mm, fertilizes 1 side of the plant***

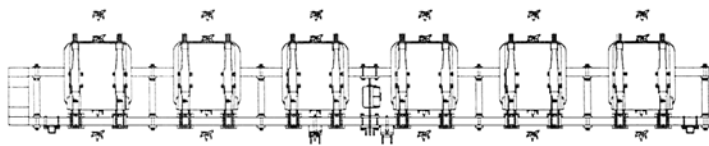


***ACD 8 discs, 4 tanks, frame 3300/3650mm, fertilizes both sides of the plant***

***Figures 14***



***ACD 10 discs, 5 tanks, frame 4300/4500/5500mm, fertilizes both sides of the plant***



***ACD 12 discs, 6 tanks, frame 4500/5500mm, fertilizes both sides of the plant***

## 09. MAINTENANCE

- 01 - Check daily the fertilizer conditions and tightening of screws, nuts and bolts of.
- 02 - Notice periodically for wear and sharpening of the discs, if necessary, replace.

### LUBRICATION

- 03 - Lubrication is essential for optimal performance and durability of moving parts of your fertilizer.
- 04 - Before start working, carefully lubricate all grease fittings, always observing re-lubrication intervals, making sure about the quality of the lubricant, as its efficiency and purity, avoiding the use products contaminated by water, dirt, etc.
- 05 - Before lubricating wipe all grease fittings with a clean, lint-free cloth and replace those that are damaged, if any.
- 06 - Lubricate all grease fittings every 8 hours of work.

#### TABLE OF EQUIVALENT AND GREASES

<i>Manufacturer</i>	<i>Grease Type</i>
<i>Petrobrás</i>	<i>Lubrax GMA 2</i>
<i>Atlantic</i>	<i>Litholine MP 2</i>
<i>Ipiranga</i>	<i>Super Grasa Ipiranga Ipiranga Super Grasa 2 Ipflex 2</i>
<i>Castrol</i>	<i>LM 2</i>
<i>Mobil</i>	<i>Mobilgrease MP 77</i>
<i>Texaco</i>	<i>Marfak 2 Agrotex 2</i>
<i>Shell</i>	<i>Retinax A Alvania EP 2</i>
<i>Esso</i>	<i>Multipurpose grease H</i>
<i>Bardahl</i>	<i>Maxlub APG 2 EP</i>

*Table 4*



*If there were other manufacturers or and other. Equivalent trends that are not listed in this. Table, consult the manufacturer's technical manual.*

## 10. LUBRICATION POINTS

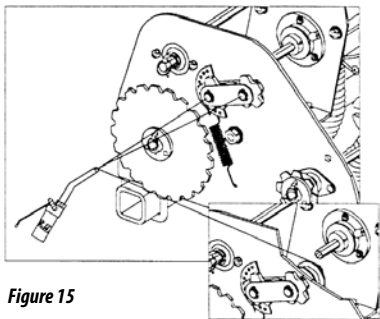
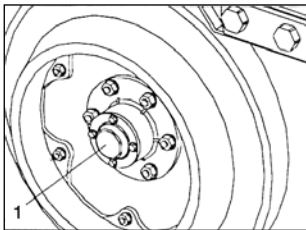


Figure 15



## OIL CHANGE

- 01 - Check the oil level in the gearbox figure 16 daily, and complete as necessary.
- 02 - Change the oil every 1500 hours of work, always using SAE 90 mineral oil.
- 03 - When a particular brand of oil is in use, avoid completing the oil level with another brand and other specification.

## HOW TO TIGHTEN THE CHAIN

- 04 - To tighten the chain, loosen the nut on the reducer (1) and slide it up to get the chain tension, then retighten the nut.

## IMPORTANT

*The lubrication of the hubs of double discs must be made at the beginning of each crop season as follows:*

- Remove the cap (1) from the hub;
- Examine the bearings if there were gaps, adjust;
- Remove the used grease (old);
- Put new grease on cap and replace it on the hub through screws (2).

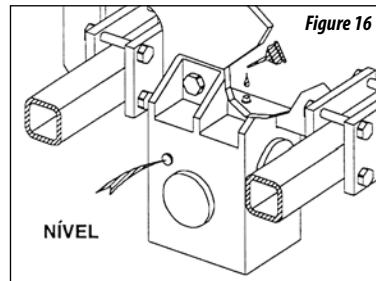


Figure 16

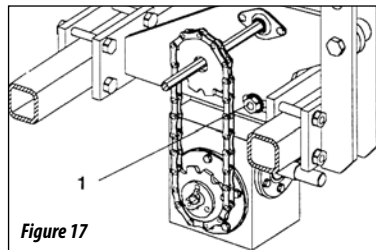


Figure 17

## 11. CLEANING

- 01 - When assembling or disassembling any part of the fertilizer, use appropriate methods and tools.
- 02 - When the implement remains inactive for an extended period, make a general cleaning, make sure the cover is not worn out. If so, apply a general coat, protective oil and lubricate the disc harrow completely.

### CLEANING THE FERTILIZER TANKS

- 03 - To clean the tanks, rotate the shaft until all the fertilizer comes out. Remove the internal parts of the tanks and do a general cleaning of parts. Check the PVC channel at the bottom of the tank, if it is worn, replace it.
- 04 - When assembling the internal parts of the tank, observe the correct assembly of the channel because the fertilizer outlet holes, both the channel and the tank must match.

## 12. STORAGE

- 01 - At the end of each work, the plow should be cleaned and inspected, checking for worn or broken parts. Apply a layer of oil on all surfaces that may present or drying or corrosion.
- 02 - Check the entire plow and paint it when necessary. Store in a flat surface in a protected location away from animals and children.

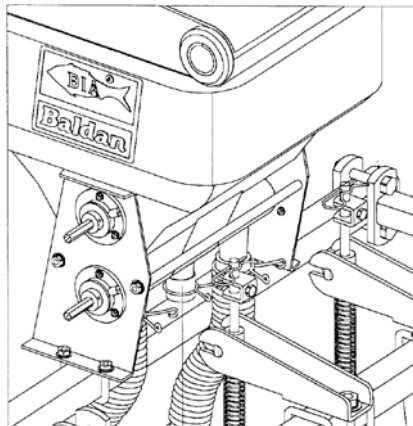


Figure 18



**IMPORTANT**

*Do not use chemical cleaners to wash fertilizer, this may damage the paint of the equipment.*

### 13. IDENTIFICATION

- In order to refer parts catalogues or apply technical support from Baldan, always indicate model (1), serial number (2), manufacture date (3) located on the identification tag.

### ALWAYS REQUIRE BALDAN ORIGINAL PARTS



**MARKETING**  
EDITING CATALOGS AND MANUALS

Code: 6055020004-2  
Revision: 01  
CPT: ACDN15016



**ATTENTION**

*The drawings in these instructions are merely illustrative.*



**CONTACT**

*In case of doubt do not operate the equipment, please contact our After-sales Service.  
Phone: 0800-152577  
e-mail: export@baldan.com.br*



## PRODUCT IDENTIFICATION

- Do the identification below to always have the properly informations about your equipment life time.

*Owner:* \_\_\_\_\_

*Dealer:* \_\_\_\_\_

*Farm:* \_\_\_\_\_ *City:* \_\_\_\_\_ *Country:* \_\_\_\_\_

*Model:* \_\_\_\_\_

*Warranty Number:* \_\_\_\_\_ *Serial Number:* \_\_\_\_\_

*Purchase Date:* \_\_\_\_\_ / \_\_\_\_\_ / \_\_\_\_\_ *Invoice Number:* \_\_\_\_\_









60550200042



**Baldan**



## **BALDAN IMPLEMENTOS AGRÍCOLAS S/A.**

Av. Baldan, 1500 | Nova Matão | CEP: 15993-000 | Matão-SP | Brasil

Phone: (0\*\*16) 3221-6500 | Fax: (0\*\*16) 3382-6500

Home Page: [www.baldan.com.br](http://www.baldan.com.br) | e-mail: [sac@baldan.com.br](mailto:sac@baldan.com.br)

Export: Phone: 55 16 3221-6500 | Fax: 55 16 3382-4212 | 3382-2480

e-mail: [export@baldan.com.br](mailto:export@baldan.com.br)