

# ***Instruction Manual***



## **CAMB DF**

Multiple Subsoiler, Fertilizer and Cultivator

## **SAB DF**

Mounted Furrower and Fertilizer



 **BALDAN**



# PRESENTATION

**W**e appreciate your purchase and congratulate you for the excellent choice you just made because you have purchased a product manufactured with technology from **BALDAN IMPLEMENTOS AGRÍCOLAS S/A.**

This instruction manual will guide you through the procedures that are necessary since its acquisition up to the operating procedures of use, security and maintenance.

**BALDAN** ensures that has delivered this farming implement to the dealer in perfect conditions.

The dealer is responsible for the custody and maintenance of this farming implement and also for the assemblage, retightening, lubrication and overhaul.

In the technical delivery, the dealer must advise the user on its maintenance, security, its obligations under any technical assistance, the strict observance of the guarantee and reading of the instruction manual.

Any request for technical assistance under warranty should be made to the dealer where it was purchased.

We reiterate the need for careful reading of the Warranty Certificate and observance of all items in this instruction manual, as doing so, the useful life of your farming implement will increase.



# ***Instruction Manual***



## **CAMB DF**

Multiple Subsoiler, Fertilizer and Cultivator

## **SAB DF**

Mounted Furrower and Fertilizer



BALDAN IMPLEMENTOS AGRÍCOLAS S/A.  
CNPJ: 52.311.347/0009-06  
Insc. Est.: 441.016.953.110



Scan the QR Code on the  
identification plate of your  
device and access this  
Instruction Manual online.

 **BALDAN**

# INDEX

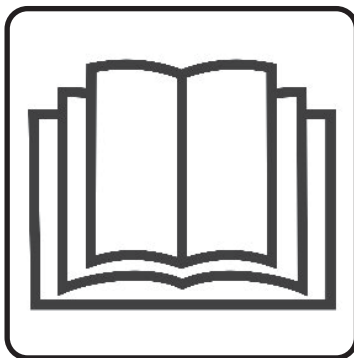
<b>SAFETY RULES.....</b>	<b>4 - 6</b>
<b>COMPONENTS .....</b>	<b>7</b>
Multiple Subsoiler, Fertilizer and Cultivator - CAMB-DF.....	7
Mounted Furrower and Fertilizer - SAB-DF.....	8
<b>TECHNICAL SPECIFICATIONS .....</b>	<b>9</b>
<b>ASSEMBLY .....</b>	<b>10</b>
Position of lines on the support.....	10
<b>TRACTOR COUPLING .....</b>	<b>10</b>
Centering the grower - CAMB-DF / SAB-DF .....	10
Transmission system drive.....	11
Automatic ratchet disasm .....	11
<b>ADJUSTMENTS.....</b>	<b>12</b>
Leveling the grower - CAMB-DF / SAB-DF .....	12
Adjusting the spacing between rods - CAMB-DF / SAB-DF.....	12
Adjusting the cutting disc depth.....	12
Adjustment of the pantograph kit .....	13
<b>AUTOMATIC DISARM SYSTEM BY FUSE.....</b>	<b>14</b>
Adjusting the opening of the furrowing rod.....	14
<b>FERTILIZER DISTRIBUTION SYSTEM .....</b>	<b>15</b>
Fertilizer distribution system.....	15
<b>RE-TRANSMISSION SYSTEM .....</b>	<b>15</b>
Adjusting the fertilizer flow.....	15 - 16
Approximate table for fertilizer distribution, re-transmission - CAMB-DF / SAB-DF .....	17
<b>HYDRAULIC MOTOR SYSTEM.....</b>	<b>18</b>
Adjustment of hydraulic engine (Optional) .....	18
<b>CALCULATION .....</b>	<b>19</b>
Practical calculation for fertilizer distribution .....	19
Practical test for valve (CAMB-DF / SAB-DF) .....	19
<b>MAINTENANCE AND OPERATION .....</b>	<b>20</b>
Chain tensioner .....	20
Lubrication .....	20
<b>LUBRIFICATION POINTS .....</b>	<b>21</b>
Lubrication every 10 hours.....	21
<b>OPERATIONAL MAINTENANCE.....</b>	<b>22</b>
<b>CLEANING .....</b>	<b>23</b>
Fertilizer system.....	23
<b>OPTIONAL EQUIPMENT .....</b>	<b>24</b>
<b>IDENTIFICATION .....</b>	<b>25</b>
Product Identification.....	25
<b>NOTES.....</b>	<b>26</b>
<b>CERTIFICATE .....</b>	<b>27</b>
Warranty certificate .....	27 - 30

**SAFETY RULES**

**THIS SYMBOL INDICATES IMPORTANT SAFETY WARNING. WHENEVER YOU FIND IT IN THIS HANDBOOK, CAREFULLY READ THE MESSAGE THAT FOLLOWS AND BE AWARE AS FOR THE POSSIBILITY OF PERSONAL INJURY.**

**ATTENTION**

- *Read the instruction manual carefully, so you can learn the recommended safety practices.*

**ATTENTION**

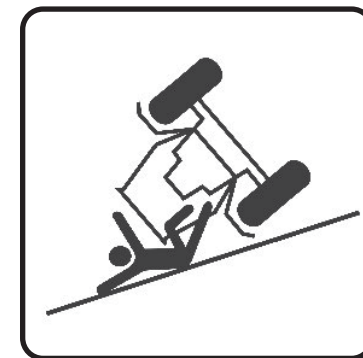
- *Do not operate the tractor if the front is light. With a tendency to rise, add weights on the front of the tractor or front wheels.*

**ATTENTION**

- *Only begin operating the tractor when are properly accommodated and with the seat belt fastened.*

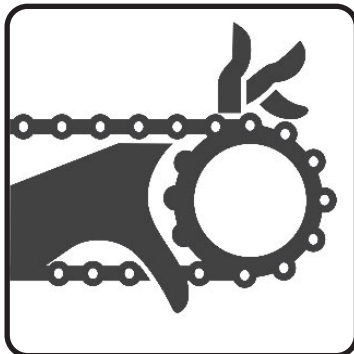
**ATTENTION**

- *There are risks of serious injury by tumbling when working on slopes.*
- *Do not use excessive speed.*



## **ATTENTION**

- *Do not operate the seed drill if the transmission hoods are not properly fixed.*
- *Only remove the hoods to make the replacement of gears, put them back immediately.*
- *When doing any work in the machine transmission, turn the ratchets off.*
- *Do not make adjustments with the machine in motion.*



## **ATTENTION**

- *Keep yourself away from the active elements of the machine (discs), they are sharp and can cause accidents.*
- *When carrying any service on discs, use safety gloves on hands.*



## **ATTENTION**

- *Whenever the seed machine is being operated, watch out for surrounding people.*
- *Do not transport people on the tractor nor in or on the equipment.*



## **ATTENTION**

- *When operating the seed drill, do not allow the permanence of people on the machine.*
- *Do not stay on the platforms with the machine in motion.*



















**ALCOHOL OR DRUGS CAN GENERATE SOME LOSS OF REFLEXES AND CHANGE THE OPERATOR'S PHYSICAL CONDITIONS. SO, NEVER OPERATE THIS EQUIPMENT UNDER USE OF THESE SUBSTANCES.**



**WARNING**

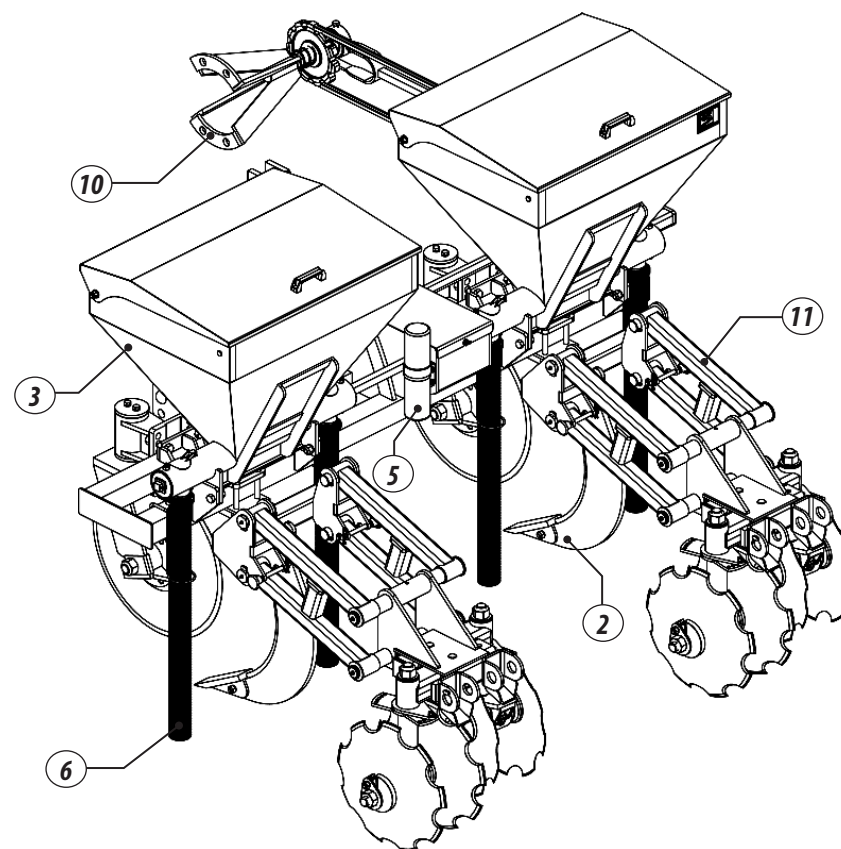
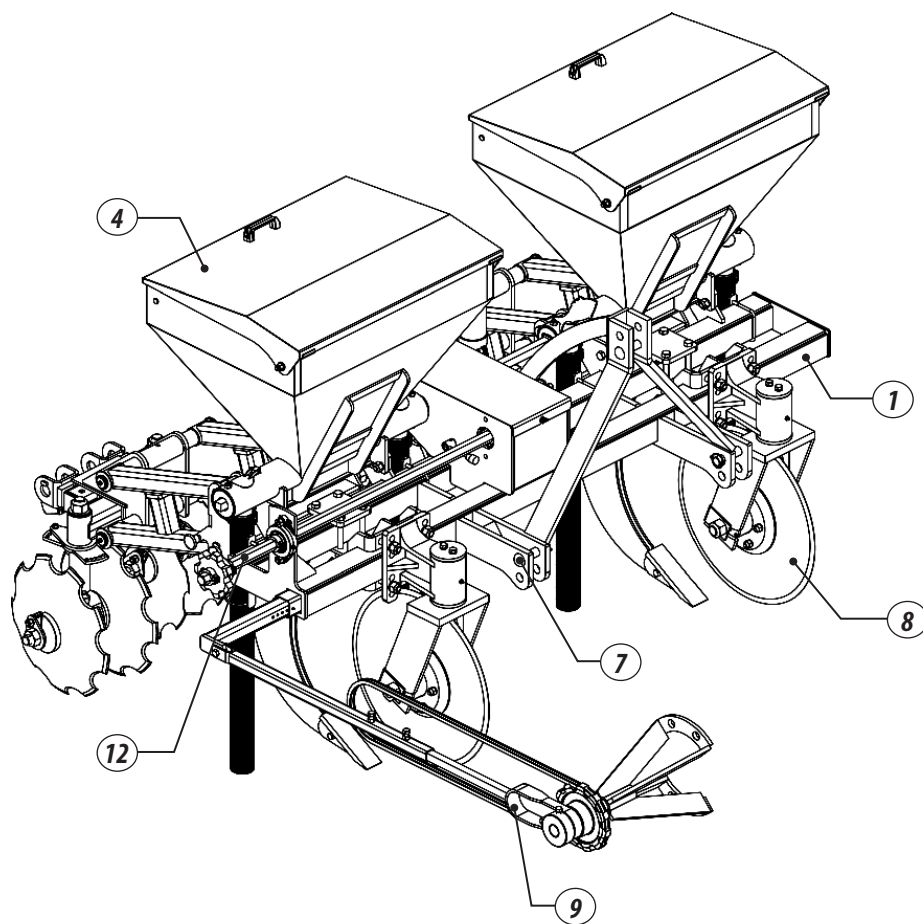
THE MISMANAGEMENT OF THIS EQUIPMENT CAN RESULT IN SERIOUS OR FATAL ACCIDENTS. BEFORE PLACING THE EQUIPMENT IN OPERATION, CAREFULLY READ THE INSTRUCTIONS IN THIS HANDBOOK. MAKE SURE THAT THE PERSON RESPONSIBLE FOR THE OPERATION IS INSTRUCTED ON THE PROPER AND SAFE HANDLING, IF HE HAS READ AND UNDERSTOOD THE HANDBOOK OF THIS PRODUCT.

- 01-  When operating the equipment, do not allow people to stay very close or on it.
- 02-  In making any assembling and disassembling service in the discs, always use safety gloves.
- 03-  Before connecting or disconnecting hydraulic hoses, relieve the system pressure by moving the command with the tractor off.
- 04-  Periodically check the conservation status of the hoses. If there is evidence of leaks, immediately replace them because the oil works under high pressure and can cause serious injury.
- 05-  Do not wear loose clothing as they can become entangled in moving parts.
- 06-  When turning the tractor engine on, be properly seated on the operator's seat and aware of the correct and safe management of both tractor and implement. Always put the selector lever in neutral, turn off the power take-off command and place the hydraulic commands in the neutral position.
- 07-  Do not run the engine in indoor environments without adequate ventilation, as the exhaust fumes are harmful to health.
- 08-  When maneuvering the tractor to the implement hitch, make sure that there is plenty of room and that there is nobody very close, always do the maneuvers in low gear and be prepared to brake in emergency situations.
- 09-  Do not make adjustments with the implement in operation.
- 10-  When working on slopes, proceed with caution when trying to maintain the necessary stability. In case of early imbalance, reduce the acceleration, turn the tractor wheels to the side of the terrain slope.
- 11-  Always drive the tractor at speeds compatible with safety, especially when working on uneven ground or slopes, always keep the tractor engaged.
- 12-  When driving the tractor on roads, keep the brake pedals connected and use of safety signs.
- 13-  Do not operate the tractor if its front is light. If there is a tendency to rise, add weights on the front or front wheels.
- 14-  Leaving the tractor, put the selector lever in neutral and pull the parking brake.
- 15-  Alcohol or drugs can generate some loss of reflexes and change the operator's physical conditions. So, never operate this equipment under use of these substances.
- 16-  Read or explain all the procedures above to the operator who cannot read.



# MULTIPLE SUBSOILER, FERTILIZER AND CULTIVATOR - CAMB-DF

Figures 1



## COMPONENTS

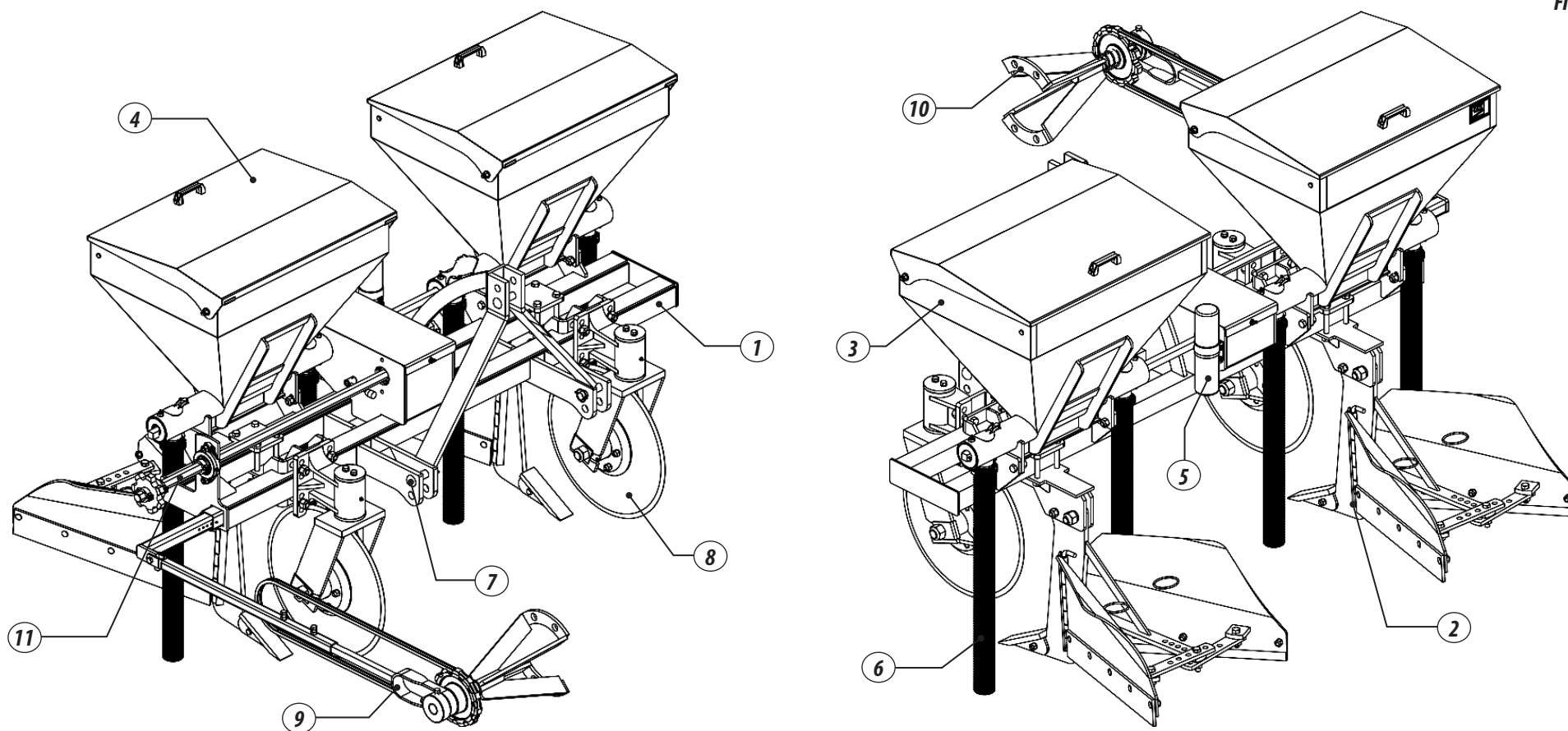
- 01 - Chassis
- 02 - Furrower rod
- 03 - Fertilizer tank
- 04 - Fertilizer tank cap

- 05 - Handbook and Catalog container
- 06 - Fertilizer conductor hose
- 07 - Coupling pin cat. II
- 08 - Cutting Disc

- 09 - Ratchet disarming rod
- 10 - Gear Support
- 11 - Cart
- 12 - Transmission system shaft

# MOUNTED FURROWER AND FERTILIZER - SAB-DF

Figures 2



## COMPONENTS

- 01** - Chassis
- 02** - Furrower rod
- 03** - Fertilizer tank
- 04** - Fertilizer tank cap

- 05** - Handbook and Catalog container
- 06** - Fertilizer conductor hose
- 07** - Coupling pin cat. II
- 08** - Cutting Disc

- 09** - Ratchet disarming rod
- 10** - Gear Support
- 11** - Transmission system shaft

## TECHNICAL SPECIFICATIONS

Table 1

Model	Nr. of lines	Spacing between lines (mm)	Total length (mm)	Total width (mm)	Total height (mm)	Fertilizer hopper (L)	Fertilizer flow (Kg/ha)	Hitch	Approx. Weight (Kg)	Minimum Tractor Power (Hp)
<b>CAMB-DF</b>	2	1300 1400 1500	1800	2750	1700	400	200 - 1200	Cat. II	1100	75
<b>SAB-DF</b>	2	1300 1400 1500	1300	2750	1700	400	200 - 1200	Cat. II	900	75

\* Yield calculated considering working speed of 5 km / hour workday of eight hours per day and equipment yield of 85%.

Baldan reserves the right to change technical specifications of this product without previous notice.  
The technical specifications are approximate and informed under normal working conditions.

### ASSEMBLY

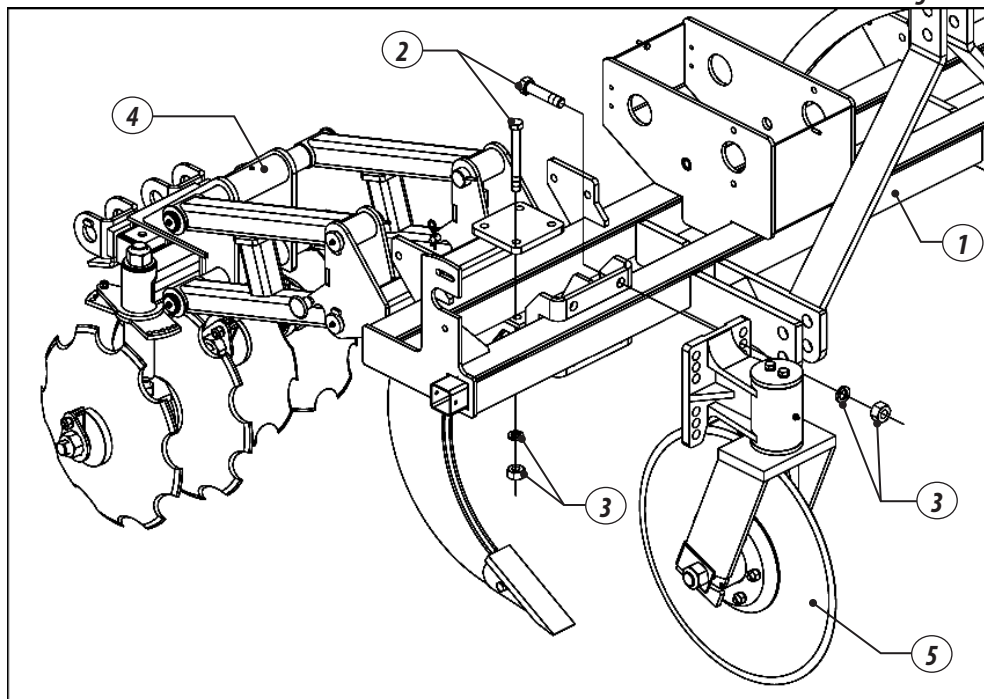
01 - The grower is factory assembled, but it is necessary to prepare it for use.

#### POSITION OF LINES ON THE SUPPORT

02 - The cultivator or furrower is provided with two lines and their spacing can be changed as required.

03 - Mark the position on the frame where the carts will be set, then loosen the screws (2), washers and nuts (3), move the cart (4) and the cutting disc (5) to the desired position, retighten after the nuts (3). Repeat this procedure for the furrower.

Figure 3

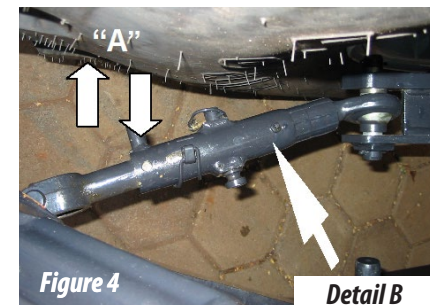


### TRACTOR COUPLING

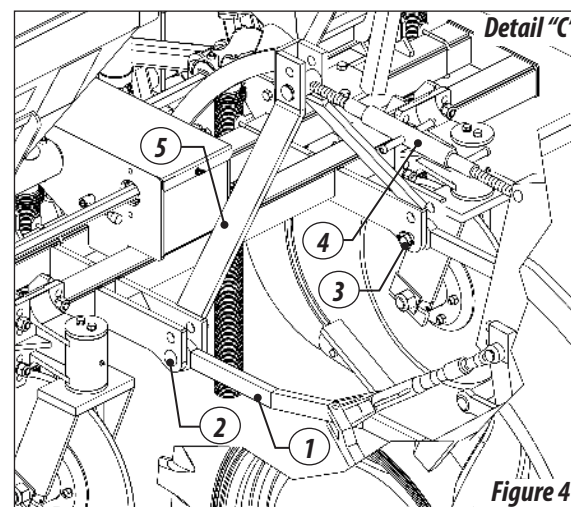
#### CENTERING THE GROWER - CAMB-DF / SAB-DF

• To center the grower in relation to the longitudinal axis of the tractor, find a flat place and proceed as follows:

01 - Align the upper hitch of the furrow with the 3rd point of the tractor, checking if the distances "A" of the lower arms of the hydraulic are equal in relation to the tractor tires as detail "B". The lower arms must be leveled with each other.



02 - Align the tractor to the furrower in idling speed. Approach the tractor in reverse until the hydraulic arms (1) of the tractor in lowered position are as aligned as possible to the coupling pins (2). Fit the eye of the tractor arms to the hitch pins (2) and place the lock (3). Then, connect the arm of the third point of the tractor (4) to the coupling header (5) of the grower according to detail "C".



#### IMPORTANT

If it is necessary to increase the arm length of the third point (4), you must do so by turning the body of the arm and not just the part of the eye. The arm of the third point (4) adjusts the attack angle of the rods to the ground, increasing or decreasing their depth.

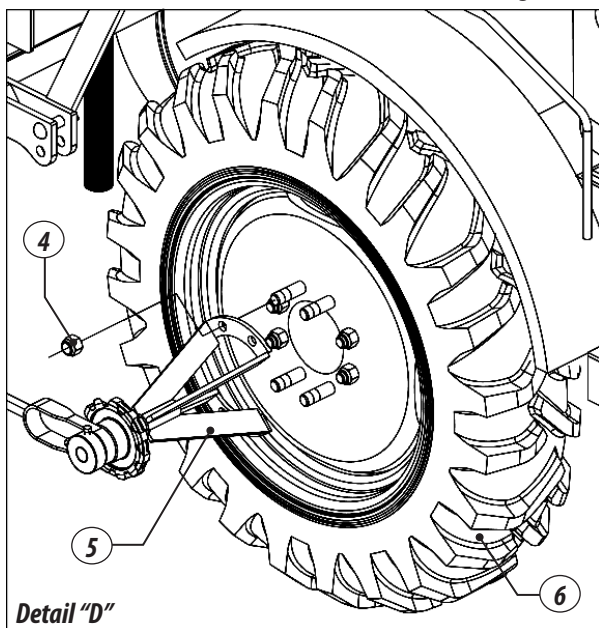


## TRANSMISSION SYSTEM DRIVE

- To operate the transmission system, proceed as follows:

**01** - Remove the nuts (4) from the tractor right wheel (5), then place the support (6) on the tractor wheel prisoners, after tighten the nuts (4), as shows the detail "D".

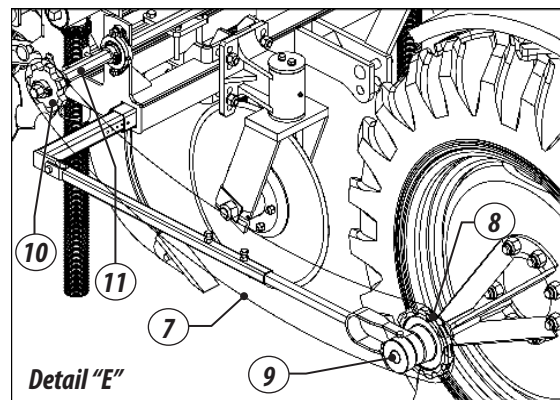
Figures 5



### ⚠ ATTENTION

Before engaging the ratchet disarm rod, check its length in relation to the tractor model that will pull the grower or furrower. If necessary, proceed the cutting of the rod to prevent damage to equipment.

**02** - Finally, place the chain (7) connecting the gear (8) of the ratchet (9) with gear (10) transmission shaft (11), as shown in detail "E".



Figures 5

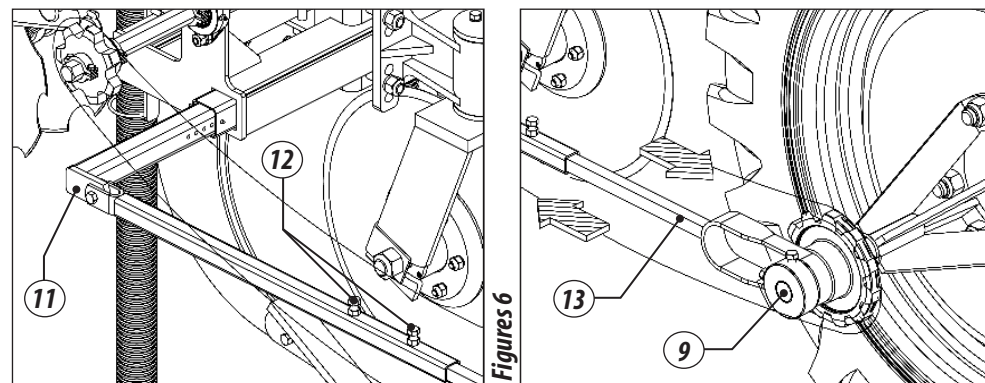
### ⚠ IMPORTANT

When assembling the wheel support, make sure it is compatible with the tractor model. If in doubt, refer to the manufacturer for each tractor model.

## AUTOMATIC RATCHET DISARM

**03** - To start or stop the fertilizer distribution, the ratchet (9) has automatic disarm that is driven by a rod (13) raising or lowering the equipment on the tractor hydraulic.

**04** - To adjust the distance of the ratchet (9) in the support (11), loosen the screws (12) that lock the rod (13), after re-tighten the screws (12).



### ⚠ IMPORTANT

The motor chain (7) must not be too tight, not to damage the transmission system.

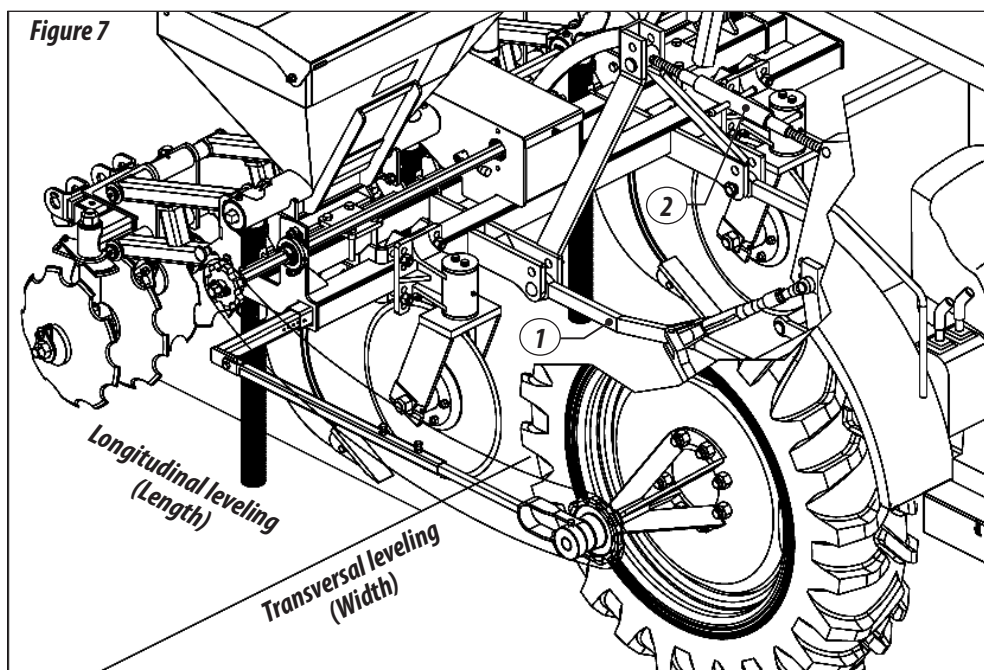
### ADJUSTMENTS

#### LEVELING THE GROWER - CAMB-DF / SAB-DF

- For the CAMB to work well, it must be leveled in both directions (transversal / longitudinal). The leveling in the transversal direction (width) is achieved by operating both arms of the tractor hydraulic (1), so that they remain with the same length. Then, do its longitudinal leveling (length) by operating on the connecting arm of the third point (2), decreasing or increasing its length. After having performed the operations above, proceed as follows:

**01** - Note that the rods must be parallel to the ground.

**02** - The working speed varies with soil conditions. An average speed of 4-5 Km / hour is recommended.



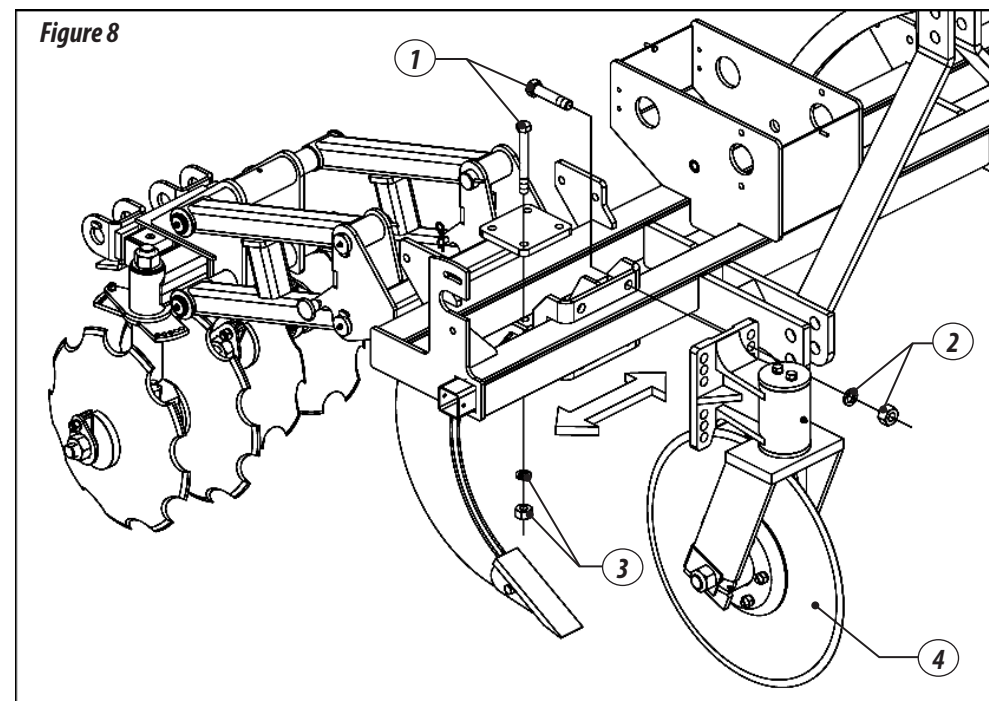
**IMPORTANT**

*The chassis of the implement must be properly leveled in relation to the ground when in depth work.*

#### ADJUSTING THE SPACING BETWEEN RODS - CAMB-DF / SAB-DF

- 01** - To increase or decrease the spacing between rods and cutting discs of CAMB-DF / SAB-DF, you must loosen the screws (1), washers and nuts (2) and move the rod (3) and cutting discs (4) to the desired position. Then, retighten them.

Figure 8



#### ADJUSTING THE CUTTING DISC DEPTH

- 01** - The CAMB-DF and SAB-DF have cutting discs from 23 " to work in areas of reduced preparation or of remnants of annual crops used in rotation in re-form areas, facilitating their cutting.

- 02** - To adjust the cutting disc depth (1), loosen the screws (2), washers and nuts (3) and move the set (4) to the desired position. Then, tighten them.

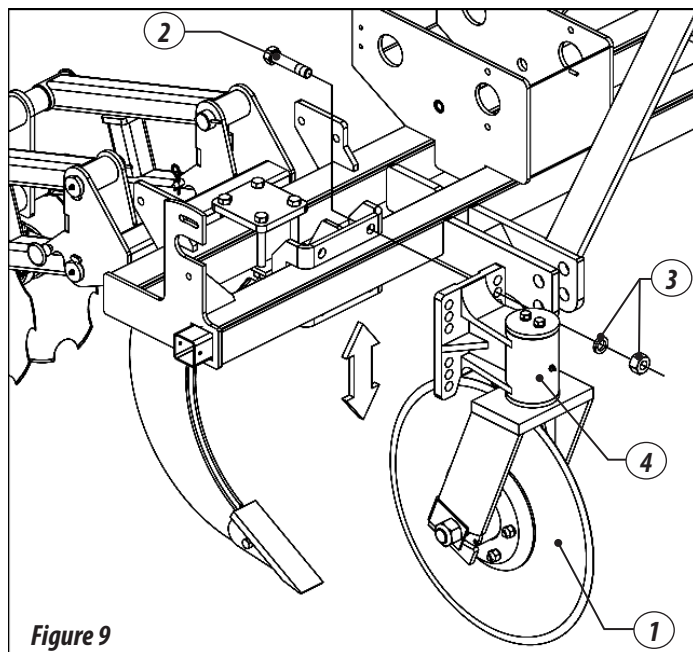
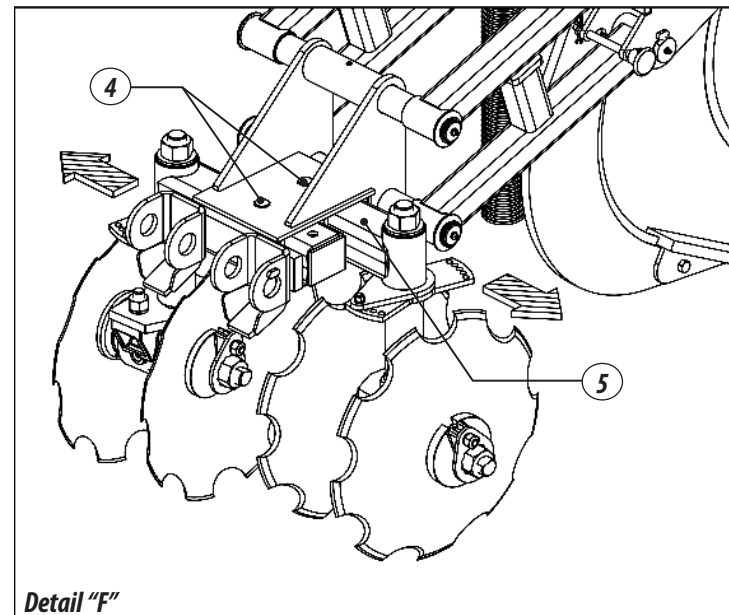


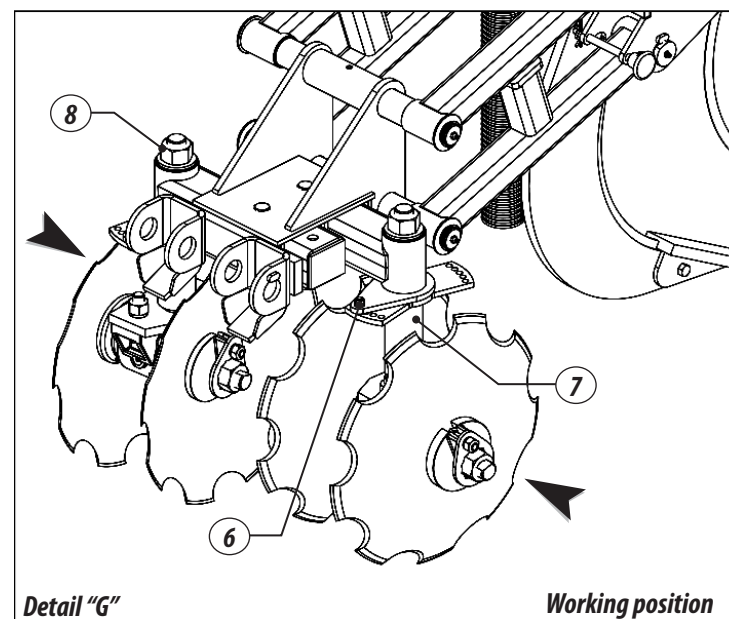
Figure 9

### ADJUSTMENT OF THE PANTOGRAPH KIT

- 01** - Intended to make the area cultivation after sugarcane planting through Kit composed of two pantographic sets of 18 "discs and leveler (optional).
- 02** - To adjust the disc harrow width, loosen the nuts and screws (4) that secure the tubes (5), moving them to the desired width. Then, retighten
- 03** - nuts and screws (4), as shown in the detail "F".
- 04** - Then, adjust the cutting angle of the discs, release nuts and screws (6) than, fix the shoe (7) of the disks, loosen the nut (8), after, rotate the disc section to the desired position. After, retighten the screws and nuts (6), as shown in detail "G".



Detail "F"



Detail "G"

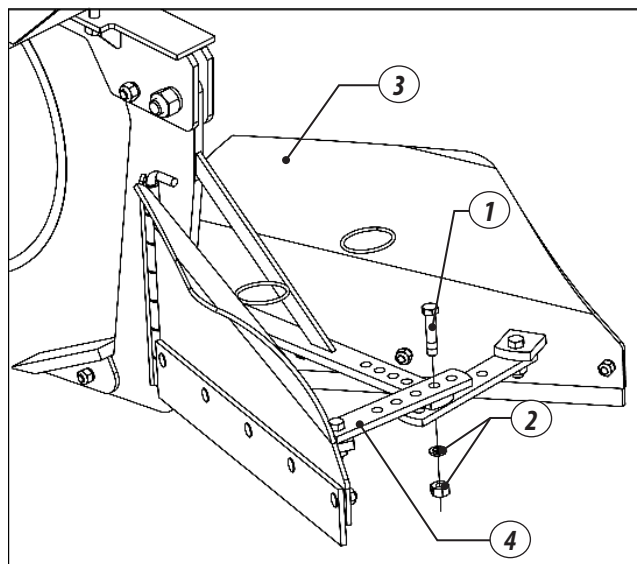
Working position

Figures 10

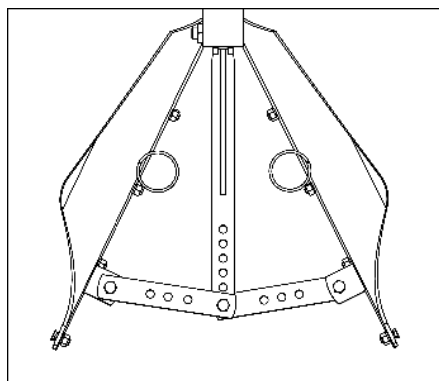


### ADJUSTING THE OPENING OF THE FURROWING ROD

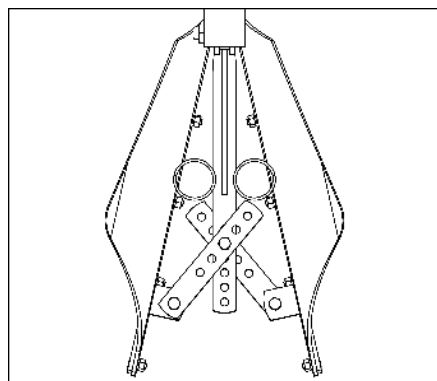
- 01 - To adjust the furrow opening, proceed as follows:
- 02 - Remove the screw (1), washer and nut (2), move the moldboard (3) to the desired setting, through the adjustment bar (4). Then, replace the screw (1), washer and nut (2).



Figures 11



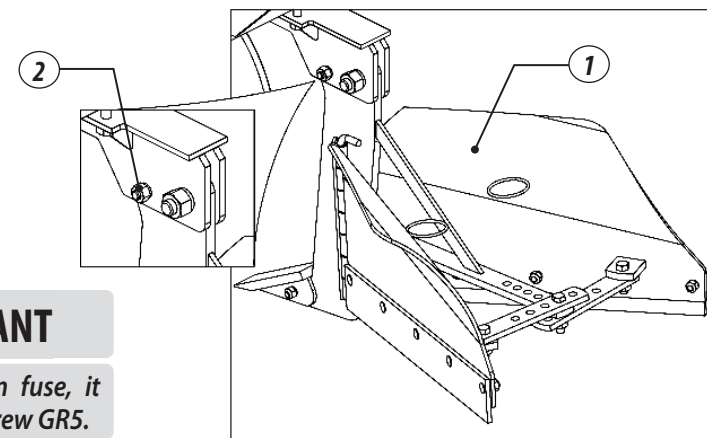
Rod opening



Rod closing

### AUTOMATIC DISARM SYSTEM BY FUSE

- 01 - SAB-DF has in its rods (1) a system of automatic disarm by fuse (2).

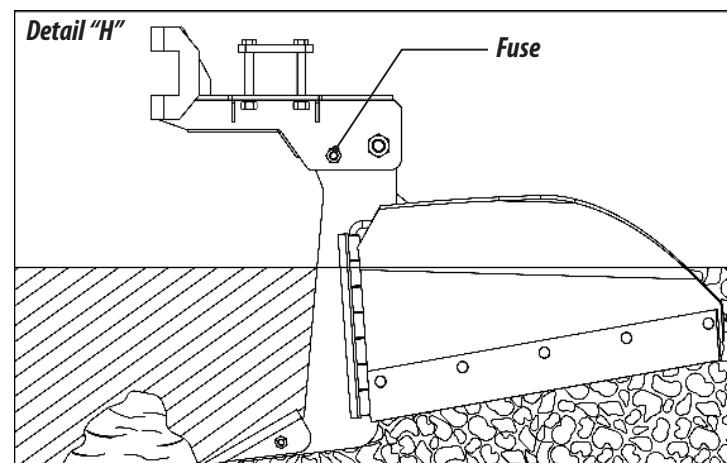


Figures 12

### IMPORTANT

*When replacing blown fuse, it must be replaced by screw GR5.*

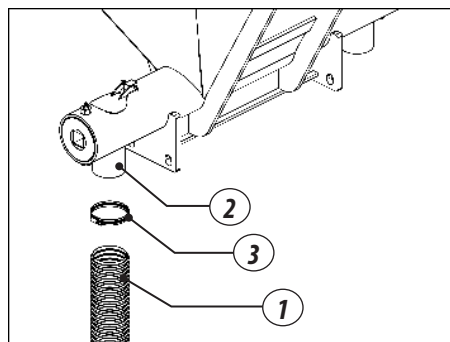
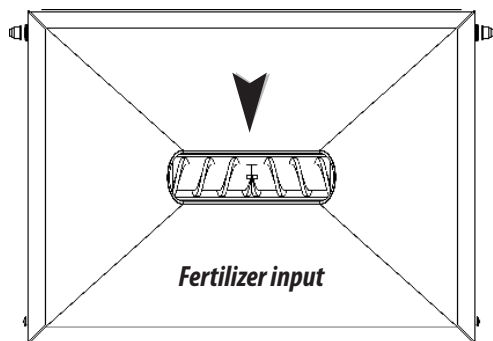
- 02 - This system works through a security screw that when suffering excessive load during operation as shown in detail "H", it breaks giving the necessary discharge to the equipment, avoiding damaging it.



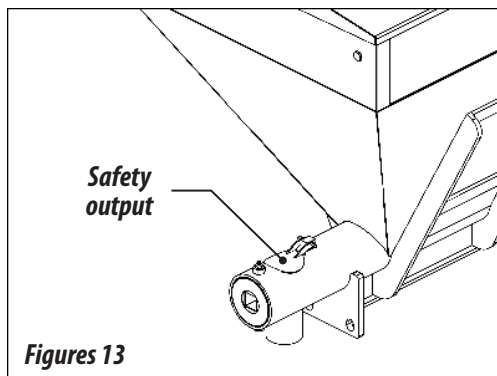
## FERTILIZER DISTRIBUTION SYSTEM

### FERTILIZER DISTRIBUTION SYSTEM

- 01** - To conduct the fertilizer from the distributor to the ground, connect the hoses (1) to the high-flow fertilizer distribution spouts (2) by fixing them with the clamps (3) preventing them from getting bent or folded.



- 02** - The high-flow individual distribution system has safety output because if the hose is clogged when the fertilizer gets into the feeder, it will start to leak through this safety output, ensuring operating without damaging the system.
- 03** - If this occurs, proceed to clean the feeder up to the end of the hose near the furrower. Clogging can occur due to the presence of roots, pieces of plastic and other objects.



Figures 13

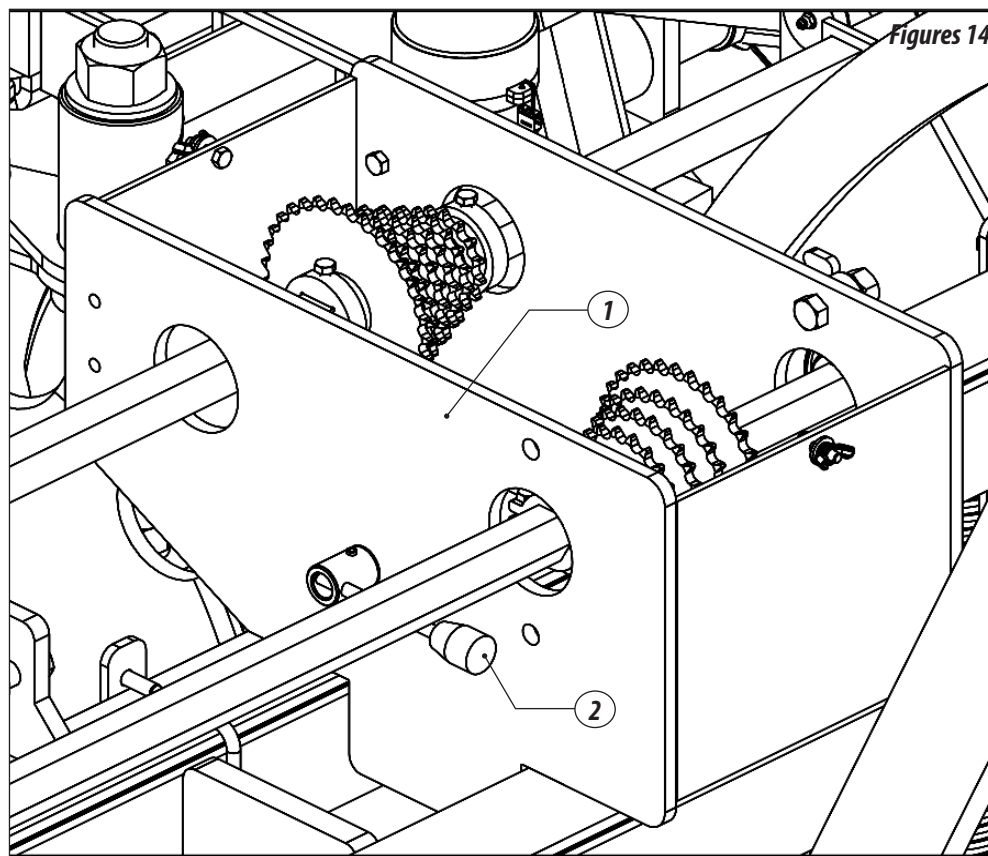
### IMPORTANT

Check the daily distribution spouts, hoses and proceed to clean the outputs of the same if necessary.

## RE-TRANSMISSION SYSTEM

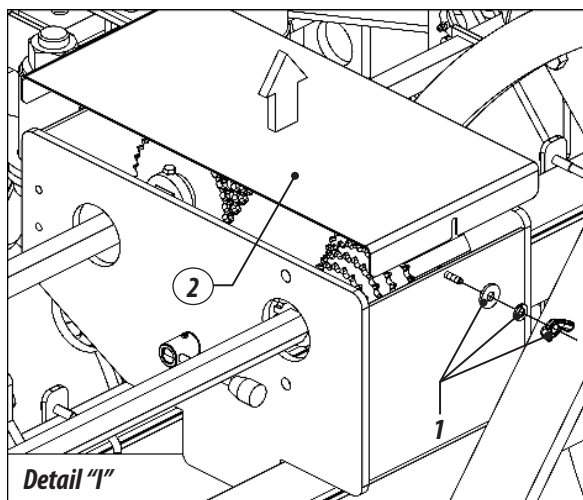
### ADJUSTING THE FERTILIZER FLOW

- 01** - The fertilizer flow adjustment is made through the re-transmission system (1). The re-transmission system triggers the fertilizer distribution system through the lever (2) guaranteeing rapid gear exchange.
- 02** - The re-transmission system consists of several gears synchronized with the gear set of the drive shaft of deposits, allow various combinations in the fertilizer distribution.

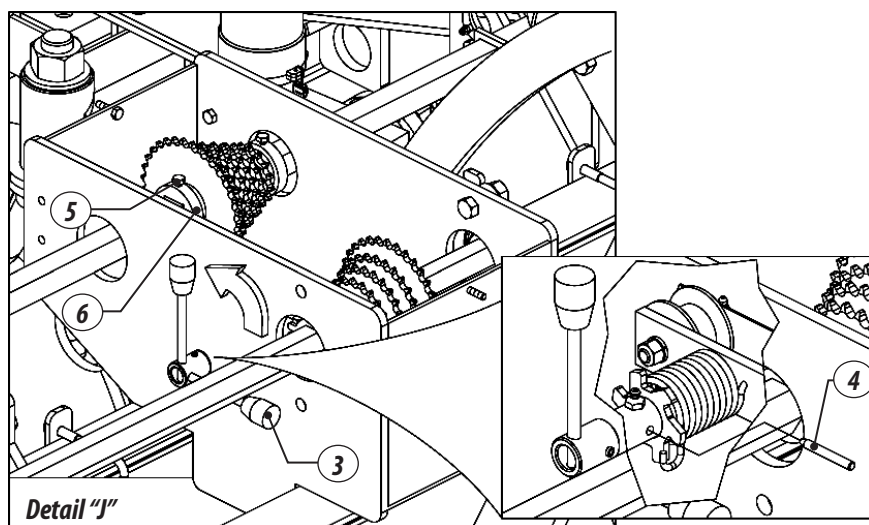


- 03** - To change the re-transmission speed, remove the wing nuts and washers (1) and the re-transmission cover (2), as shown in the detail "I".

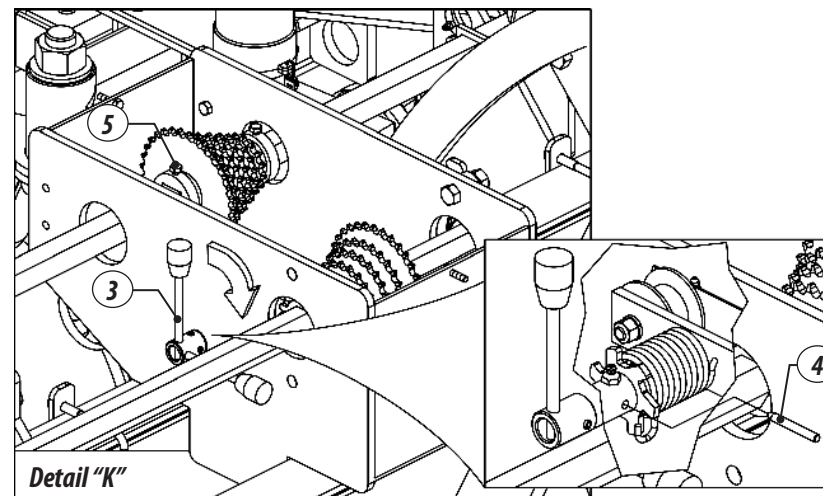
Figures 14



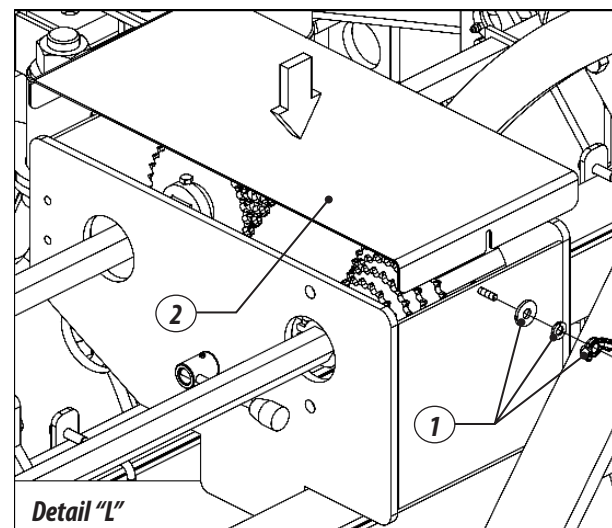
- 04** - Then, push the lever (3) and lock with the pin (4), releasing the chain, then loosen the screws (5) from the support gear sleeves (6) and move them to the desired position, as shown in the detail "J".



- 05** - Align the gears, tighten the screws (5) and place the chain in the selected gears according to the distribution to be made, remove the pin (4) and release lever (3), as shown in the detail "K".



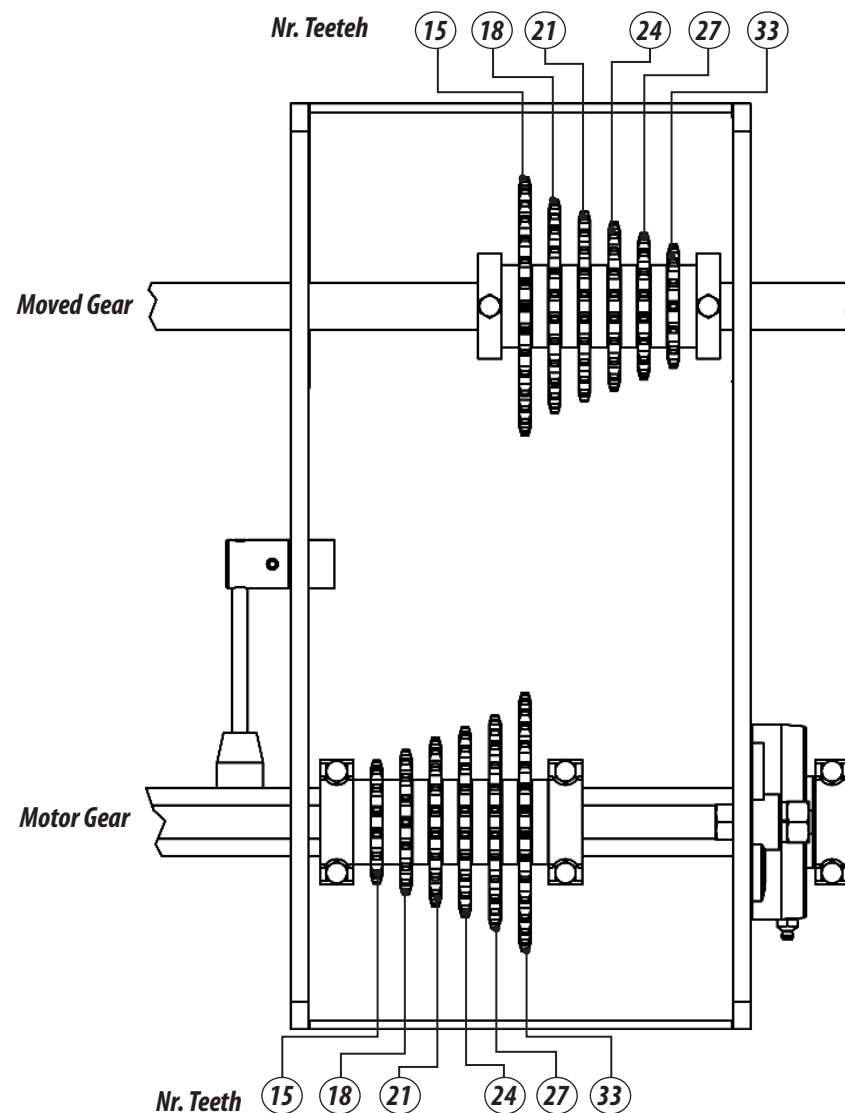
- 06** - Finish by assembling the re-transmission cover (2), fixing it with washers and wing nuts (1), as shown in the detail "L".



## APPROXIMATE TABLE FOR FERTILIZER DISTRIBUTION, RE-TRANSMISSION - CAMB-DF / SAB-DF

Fertilizer Distribution Table - CAMB-DF / SAB-DF					
Motor Gear	Moved Gear	Grams / 50m per line	Spacing (mm)		
			Ka / Ha		
			1300	1400	1500
15	33	1055	162	151	141
15	27	1168	180	167	156
18	33	1253	193	179	167
15	24	1308	201	187	174
18	27	1387	213	198	185
13	18	1398	215	200	186
21	33	1451	223	207	193
15	21	1486	229	212	198
18	24	1553	239	222	207
21	27	1606	247	229	214
24	33	1648	254	235	220
15	18	1721	265	246	229
18	21	1765	272	252	235
21	24	1799	277	257	240
24	27	1825	281	261	243
27	33	1846	284	264	246
21	21	2044	314	292	273
33	27	2263	348	323	302
27	24	2289	352	327	305
24	21	2323	357	332	310
21	18	2367	364	338	316
18	15	2427	373	347	324
33	24	2534	390	362	338
27	21	2601	400	372	347
24	18	2689	414	384	359
21	15	2810	432	401	375
33	21	2880	443	411	384
27	18	3012	463	430	402
24	15	3194	491	456	426
33	18	3335	513	476	445
27	15	3577	550	511	477
33	15	3960	609	566	528

Table 2



**NOTE**

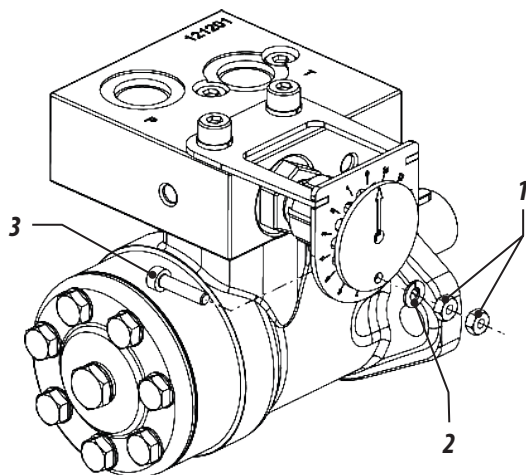
It is recommended to do a collection test at a distance of 50 meters before starting using the implement.

### HYDRAULIC MOTOR SYSTEM

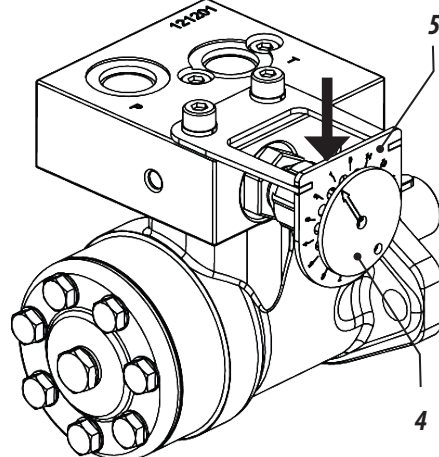
#### ADJUSTMENT OF HYDRAULIC ENGINE (OPTIONAL)

The CAMB-DF / SAB-DF can be optionally purchased with the hydraulic motor system. To regulate the distribution of the fertilizer with the hydraulic motor, proceed as follows:

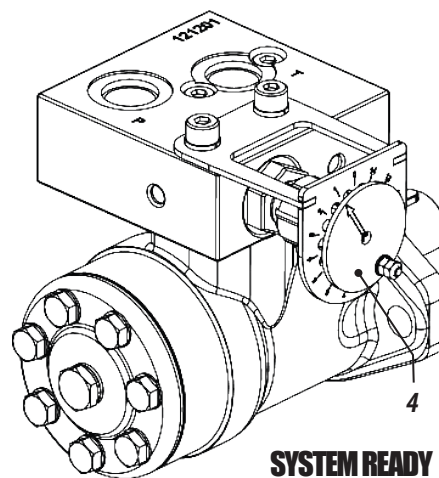
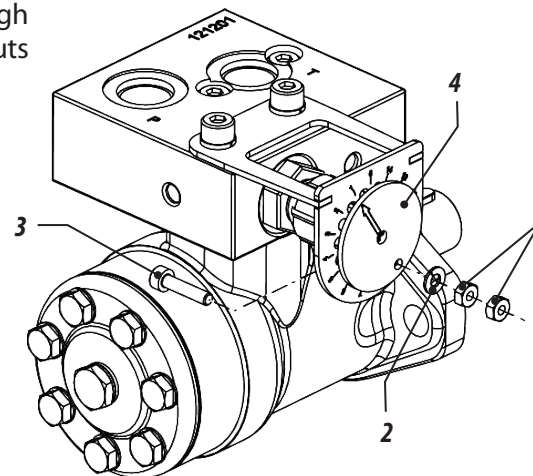
- 1- Loosen the nuts and lock-nuts (1), washer (2) and remove the bolt (3).



- 2- Then, turn the washer (4) on the first marking of the plate (5).



- 3- Then, lock the washer (4) through the bolt (3), washer (2) and the nuts and locknuts (1) again.



The regulation of the fertilizer must be done through the valve and hydraulic motor, with the tractor stopped, but at the same working rotation. Collect the fertilizer during the timed time to cover 50 meters and calculate according to the example of the following page.



**NOTE** You should wait a few seconds before starting to collect the fertilizer, so that it completely envelops the shaft. Before starting the test, warm the tractor oil to the normal working temperature.

## CALCULATION

### PRACTICAL CALCULATION FOR FERTILIZER DISTRIBUTION

To distribute other quantities of fertilizer in spacing and different areas, proceed as follows:

- 1- Determine the line spacing and the amount of fertilizer to be distributed per bushel (Aa) or hectare (Ha).
- 2- **EXAMPLE:** Cultivator or Grooving with 1400 mm spacing to distribute 400 kg fertilizer per Ha, use the formula below:

#### FORMULA:

$$X = \frac{E \times Q}{A} \times D \quad X = \frac{1400 \times 400}{10.000} \times 50 \quad X = 56,00 \times 50 = 2800$$

**X = 2.800 grams in 50 meters (test).**

#### CONCLUSION:

- To distribute 400 kgs / ha you need to be dropping 2,800 grams in 50 meters (test) or 2,800 grams in a collection in periods:
- 36s for work speed of 5km/h.
- 30s for work speed of 6km/h.
- 26s for work speed of 7km/h.

### PRACTICAL TEST FOR VALVE (CAMB-DF / SAB-DF)

- Turn the knob to position 1. With the Cultivator or Trencher stopped, collect the fertilizer for 30 seconds. After this period of 30s, remove the container and check that the weight is 2800g. If it is, lock it with the screw in position 1 and always start the work at a constant speed of 6km / h. If the weight of the fertilizer collected in the 30s is, for example, less than 2800 g, turn the handle to position 2, and so on until the collected weight is close to the desired one.



#### NOTE

*When you get the result, adjust the Cultivator or Trencher to distribute the amount found, or the one that comes closest to the predetermined space for the test.*



#### ATTENTION

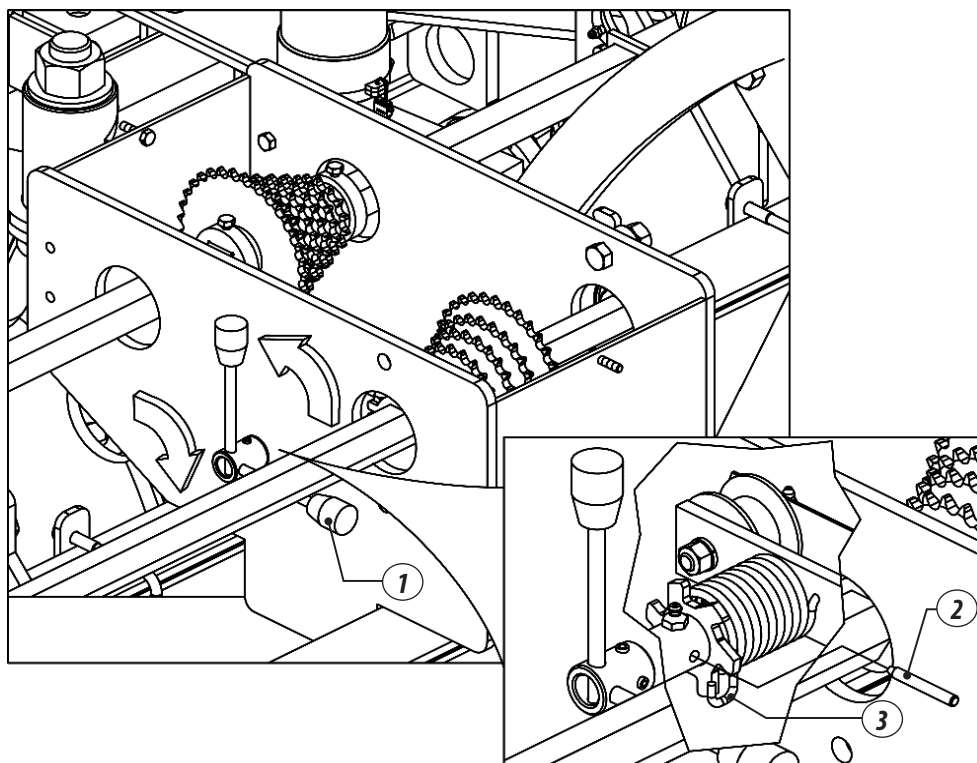
*The variation in working speed affects the uniform distribution of the fertilizer. When changing the fertilizer manufacturer, it is necessary to check again. After the first working day, recheck all adjustments.*



### MAINTENANCE AND OPERATION

#### CHAIN TENSIONER

- The chain tensioner is provided with a torsion spring for higher flexibility, and if greater pressure is necessary, proceed as follows:
- 01 - Push the lever (1) and lock it with the pin (2), releasing the chain. Then, release the spring (3) and engage in the next adjustment, giving it greater pressure on the tensioner. Then, position the chain again, remove the pin (2) and release the lever (1).



#### IMPORTANT

Check the chain tension every day, the normal clearance should be 1 cm in their center.

#### LUBRICATION

- 01 - Lubrication is essential for a good performance and higher durability of moving parts of your grower, helping reducing maintenance cost.
- 02 - Before beginning operation, thoroughly lubricate all grease fittings, always observing lubrication intervals on the following pages. Make sure the lubricant is of good quality; avoid using products contaminated by water, dirt and other agents.

MANUFACTURER	TYPE OF RECOMMENDED GREASE
Petrobrás	Lubrax GMA 2
Atlantic	Litholine MP 2
Ipiranga	Super Graxa Ipiranga Ipiranga Super Graxa 2 Ipiflex 2
Castrol	LM 2
Mobil	Mobilgrease MP 77
Texaco	Marfak 2 Agrotex 2
Shell	Retinax A Alvania EP 2
Esso	Multipurpose grease H Litholine MP 2
Bardahl	Maxlub APG 2 EP
Petronas	Tutela Jota MP 2 EP Tutela Alfa 2K Tutela KP 2K

Table 11

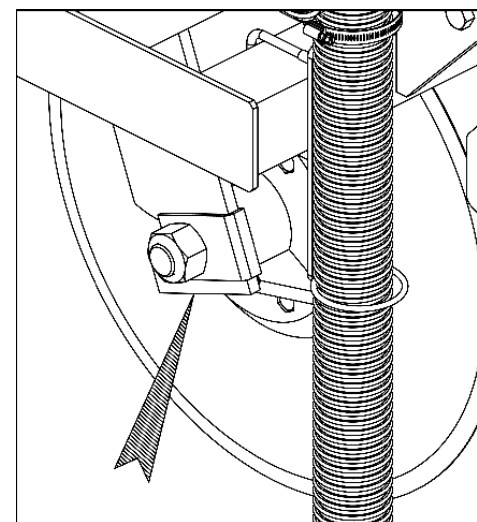
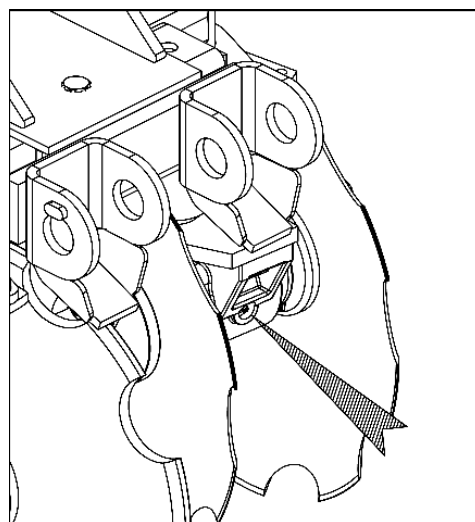
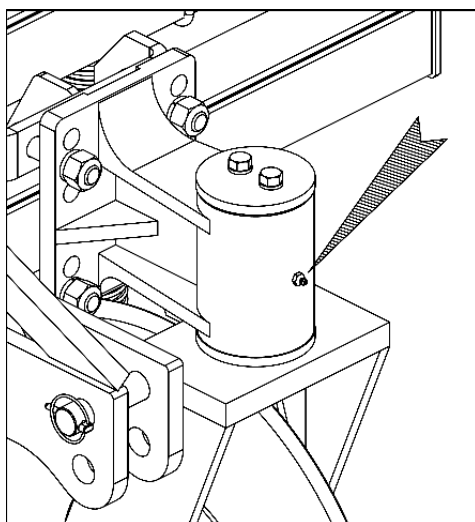
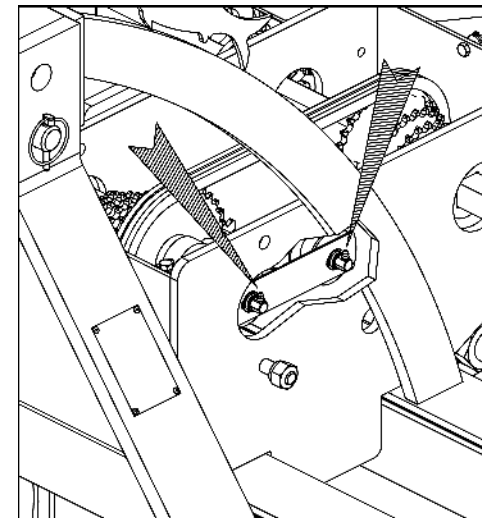
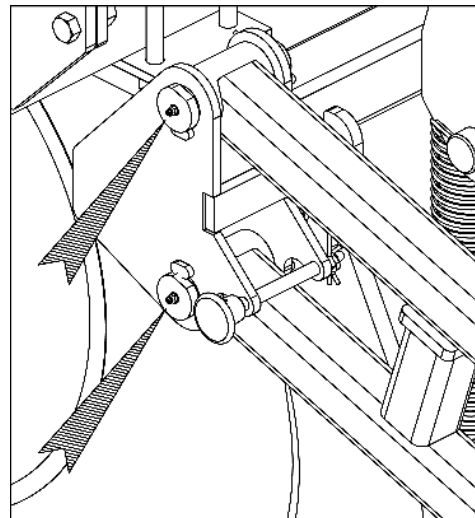
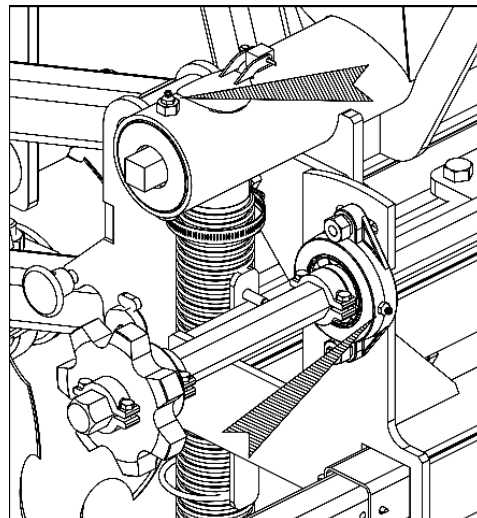
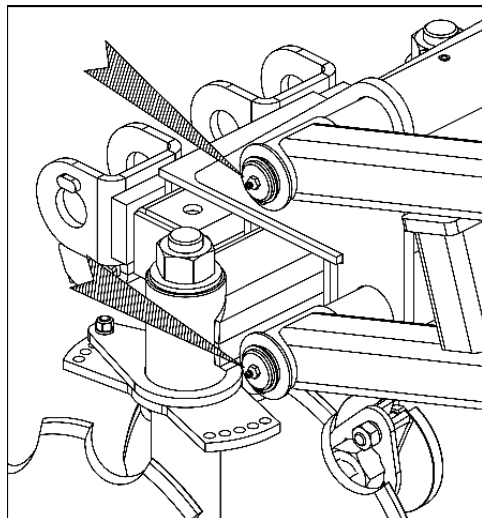
#### IMPORTANT

If there are other lubricants and / or equivalent greases not listed in this table, refer to the manufacturer's technical handbook.



## LUBRICATION POINTS

LUBRICATE EVERY 10 HOURS



## OPERATIONAL MAINTENANCE

Table 4

PROBLEMS	PROBABLE CAUSES	SOLUTIONS
During planting, fertilizer leaks through the safety outputs.	Hoses are clogged or there are pieces of plastic in the spiral hoses that conduct the fertilizer.	Unclog the hoses or remove the upper gutter that gives access to coil, rotate the shaft to the opposite side until the foreign body is removed.
Hub shaft of the fertilizer tank does not turn.	Spiral blocked with wet fertilizer or excess fertilizer in closed line.	Unclog the coils, check if there is loose gutter and if the fertilizer is coming in through their sides.
Front of the tractor raises when it lifts the grower.	Lack of ballast in the front of the tractor.	Ballast to the front of the tractor.
The grower moves aside during cultivation in hilly terrain.	Lower arms of the tractor are loose coupling with side displacement.	Attach the lower arms of the tractor hitch to eliminate side movement.
Rods often disarm.	Improper adjustment of springs.	Apply the correct adjustment on the springs.
	Area with obstacles (wood, stone). Soil too compressed.	Reduce work speed or avoid them.

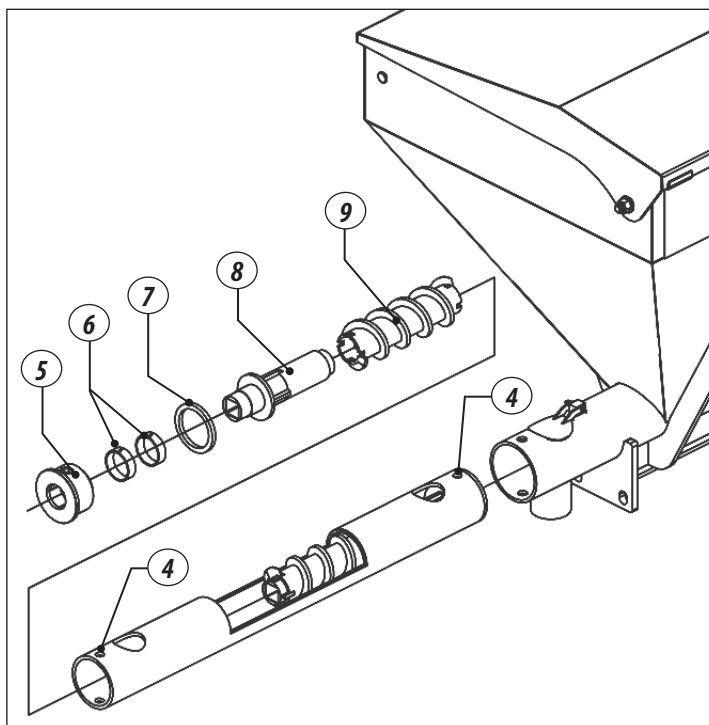
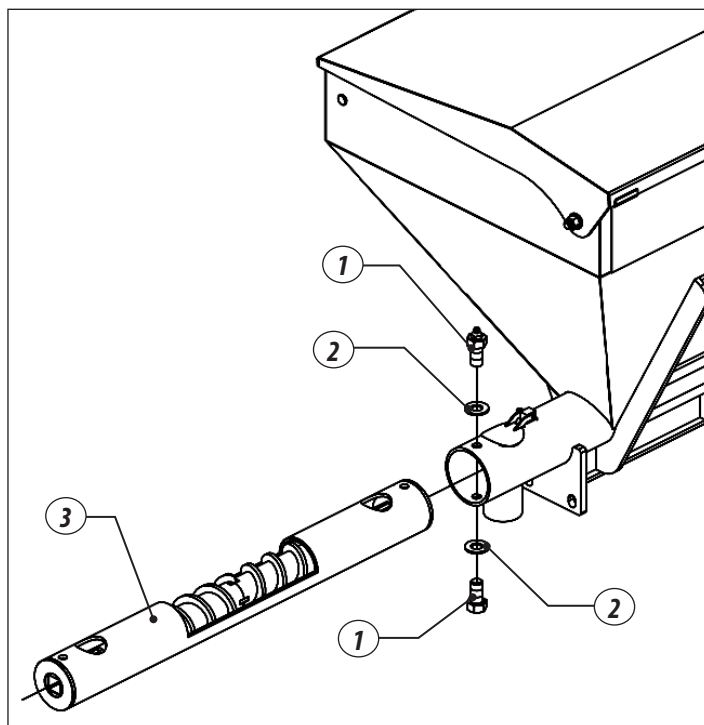
## CLEANING

### FERTILIZER SYSTEM

- After work, do not leave fertilizer in the tank, the tank should be cleaned as follows:
  - 01** - Loosen the screws (1), washers (2), remove the fertilizer conductor (3). Then, loosen the screws (4), remove the sleeves (5), guide rings (6), bushing (7), conductive sleeve (8) and the conductor (9).
  - 02** - Proceed to clean the tank, shaft and also the distributing spouts and then rinse them under running water.
  - 03** - Reassemble all components observing the correct assembly of the fertilizer distribution system.

### ⚠ ATTENTION

- \* Fill the fertilizer tank always at the workplace.
- \* Avoid any kind of impurity inside the fertilizer tank.
- \* Make dosage measurement daily.
- \* Do not insert fingers or objects into holes or in the inner tank in motion because the helical conductor can cause serious injuries.

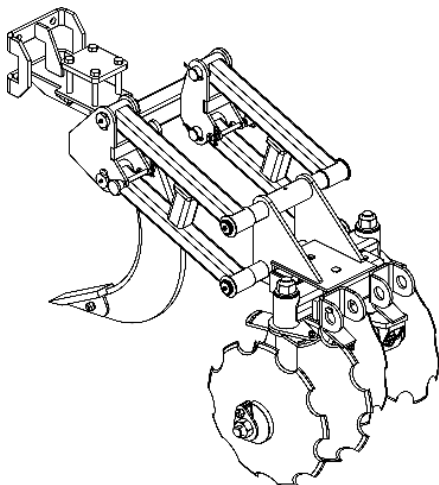


### 🔧 IMPORTANT

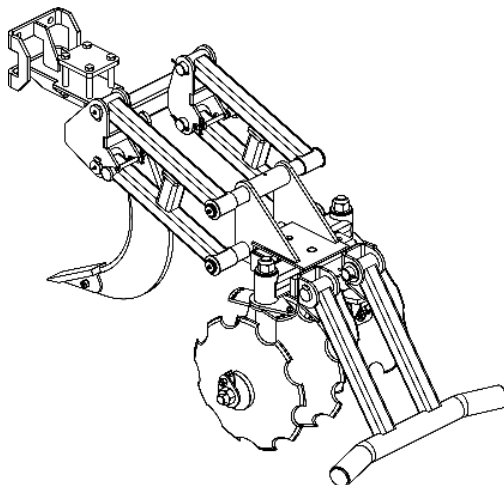
- 01**- Wash the CAMB-DF or SAB-DF. Do not use chemical cleaners as they may damage its paint.
- 02**- Give an overall paint coat at points where there is need.
- 03**- Spray it with oil or any other type of anti-corrosion agent.
- 04**- Check all moving parts of the CAMB-DF or SAB-DF, if the present wear or clearance, make the necessary adjustment or the replacement of parts, leaving it ready for use.
- 05**- Use original Baldan original parts.
- 06**- Store the CAMB-DF or SAB-DF in a dry place, protected from sun and rain.

**OPTIONAL EQUIPMENT**

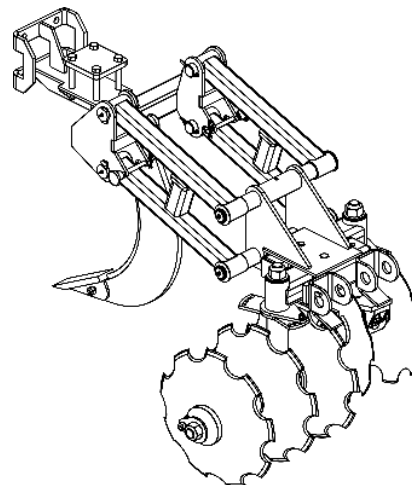
**1 - MOWER WITH 4 DISCS**



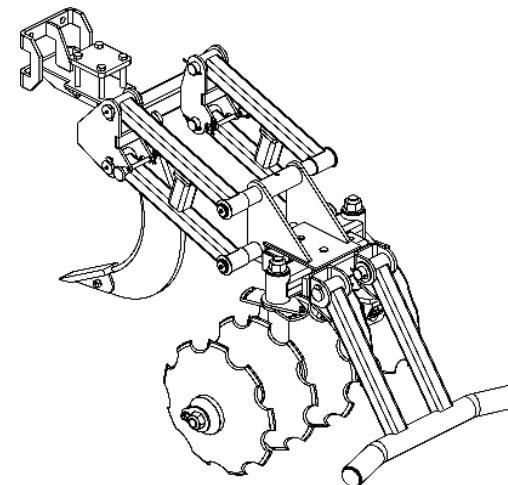
**2 - MOWER WITH 4 DISCS AND LEVELER**



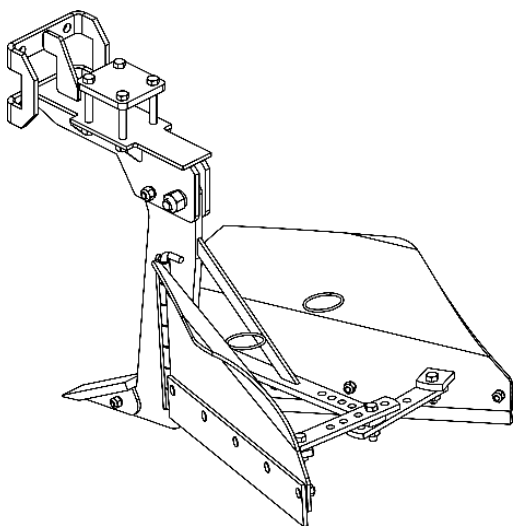
**3 - MOWER WITH 5 DISCS**



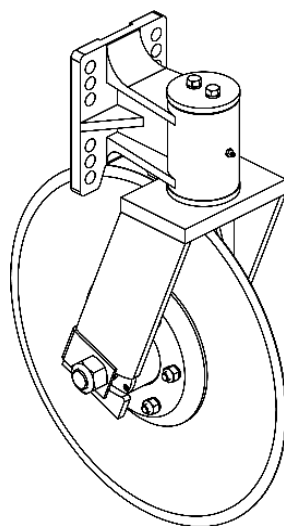
**4 - MOWER WITH 5 DISCS AND LEVELER**



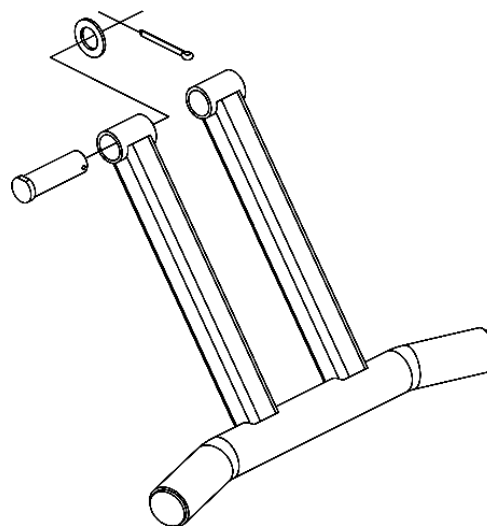
**5 - COMPLETE ROD**



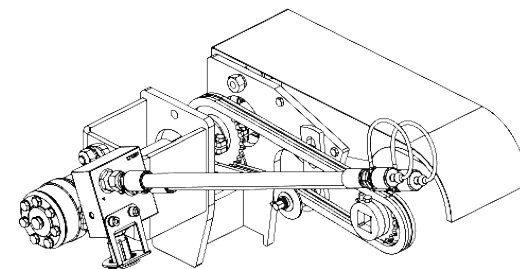
**6 - CUTTING DISC CART "23"**



**7 - LEVELER SUPPORT CPL**



**8 - HYDRAULIC MOTOR KIT FOR TRANSFORMING CAMB-DF / SAB-DF MECHANICAL FOR HYDRAULIC MOTOR**

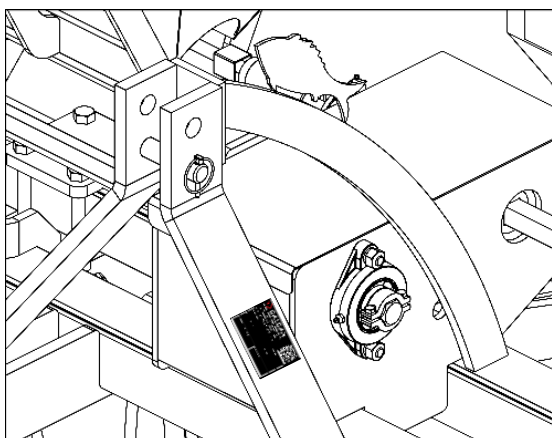


## IDENTIFICATION

### PRODUCT IDENTIFICATION

- To view the parts catalog or request technical assistance from Baldan, always indicate the model (1), serial number (2) and date of manufacture (3), which are on the identification label of your equipment.

## ALWAYS REQUIRE BALDAN ORIGINAL PARTS



- Make the identification of the data below to always have correct information about the life time of your equipment.

Owner's name: \_\_\_\_\_

Dealer: \_\_\_\_\_

Farm: \_\_\_\_\_

City: \_\_\_\_\_ State: \_\_\_\_\_

Model: \_\_\_\_\_ Warranty: \_\_\_\_\_

Invoice number: \_\_\_\_\_

Date of purchase: \_\_\_\_ / \_\_\_\_ / \_\_\_\_ Serial number: \_\_\_\_\_



## PUBLICATIONS

Code: 6055010446-9  
CPT: CAMBDF11818



## ATTENTION

The drawings herein are merely illustrative. To allow a better view and detailed instruction, the safety devices in some drawings of this manual were removed (covers, protections, etc.). Never operate CAMB-DF / SAB-DF without these devices.



## CONTACT

In case of doubt do not operate the equipment, please contact our after-sales service.

Telephone: 0800-152577  
e-mail: posvenda@baldan.com.br



**NOTES:**

This image shows a full page of blank, lined paper. It features approximately 20 evenly spaced horizontal grey lines across its entire width, providing a guide for writing. The paper itself is a clean, off-white color. There are no margins, text, or other markings present on the page.

[illegible]



# WARRANTY CERTIFICATE

**BALDAN IMPLEMENTOS AGRÍCOLAS S/A**, ensures normal operation of the implement to the dealer for a period of six (6) months from the delivery date on the resale invoice to the first end consumer.

During this period undertakes **BALDAN** to remedy defects in materials and/or workmanship of their responsibility, and the labour, freight and other expenses are of the responsibility of the dealer.

During the warranty period, the order and replacement of any defective parts must be made to the dealer in the region, who will send the defective part for analysis at **BALDAN**. When such a procedure is not possible and exhausted the resolution capacity of the dealer, the dealer will request support from the Technical Assistance of **BALDAN**, through the specific form distributed to resellers.

After analysing the items replaced by the Technical Assistance of Baldan, and concluded that it is not a warranty issue, so it will be of responsibility of the reseller any costs related to replacement; as well as the cost of materials, travel including accommodation and meals, accessories, lubricant and other expenses resulting from the call to the service, with the Baldan company authorised to make its billing on behalf of the reseller.

Any repairs made to the product that is within the warranty period of the dealer will only be authorized by **BALDAN** with prior presentation of the budget describing the work of parts and labor to be performed.

It is excluded from this term the product that is repaired or modified in shops that do not belong to the dealer network of **BALDAN**, as well as the use of non-genuine parts or components in the product of the customer.

This guarantee will be void when it is determined that the defect or damage is the result of improper product use, failure to follow instructions or the inexperience of the operator.

It is agreed that this warranty does not cover tires, polyethylene tanks, driveshafts, hydraulic components, etc., which is equipment guaranteed by their manufacturers.

Manufacturing and or material defects, object of this warranty term, will not constitute, under any circumstances, a reason for termination of the purchase and sale contract or compensation of any nature.

**BALDAN** reserves the right to modify and or improve the technical characteristics of its products without notice and without obligation so to proceed with the products previously manufactured.

## INSPECTION AND DELIVERY CERTIFICATE

- **SERVICE BEFORE DELIVERY:** This implement was carefully prepared by the sales organisation, checked in all its parts according to the manufacturer's instructions.
- **DELIVERY SERVICE:** The user is informed about the terms of existing warranty and instructed on the use and maintenance care.
- I confirm that I was informed about the current guarantee terms and instructed about the use and proper maintenance of the implement.

Tool: \_\_\_\_\_

Serial Number: \_\_\_\_\_

Date: \_\_\_\_\_ Invoice No: \_\_\_\_\_

Reseller: \_\_\_\_\_ City: \_\_\_\_\_

State: \_\_\_\_\_ Zip Code: \_\_\_\_\_

Owner: \_\_\_\_\_ Phone: \_\_\_\_\_

Address: \_\_\_\_\_ Number: \_\_\_\_\_

City: \_\_\_\_\_ State: \_\_\_\_\_

E-mail: \_\_\_\_\_

Sale Date: \_\_\_\_\_

Signature / Reseller Stamp \_\_\_\_\_

1st - Owner

### INSPECTION AND DELIVERY CERTIFICATE

- **SERVICE BEFORE DELIVERY:** This implement was carefully prepared by the sales organisation, checked in all its parts according to the manufacturer's instructions.
- **DELIVERY SERVICE:** The user is informed about the terms of existing warranty and instructed on the use and maintenance care.
- I confirm that I was informed about the current guarantee terms and instructed about the use and proper maintenance of the implement.

Tool: \_\_\_\_\_

Serial Number: \_\_\_\_\_

Date: \_\_\_\_\_ Invoice No: \_\_\_\_\_

Reseller: \_\_\_\_\_ City: \_\_\_\_\_

State: \_\_\_\_\_ Zip Code: \_\_\_\_\_

Owner: \_\_\_\_\_ Phone: \_\_\_\_\_

Address: \_\_\_\_\_ Number: \_\_\_\_\_

City: \_\_\_\_\_ State: \_\_\_\_\_

E-mail: \_\_\_\_\_

Sale Date: \_\_\_\_\_

Signature / Reseller Stamp \_\_\_\_\_

2nd - Reseller

### INSPECTION AND DELIVERY CERTIFICATE

- **SERVICE BEFORE DELIVERY:** This implement was carefully prepared by the sales organisation, checked in all its parts according to the manufacturer's instructions.
- **DELIVERY SERVICE:** The user is informed about the terms of existing warranty and instructed on the use and maintenance care.
- I confirm that I was informed about the current guarantee terms and instructed about the use and proper maintenance of the implement.

Tool: \_\_\_\_\_

Serial Number: \_\_\_\_\_

Date: \_\_\_\_\_ Invoice No: \_\_\_\_\_

Reseller: \_\_\_\_\_ City: \_\_\_\_\_

State: \_\_\_\_\_ Zip Code: \_\_\_\_\_

Owner: \_\_\_\_\_ Phone: \_\_\_\_\_

Address: \_\_\_\_\_ Number: \_\_\_\_\_

City: \_\_\_\_\_ State: \_\_\_\_\_

E-mail: \_\_\_\_\_

Sale Date: \_\_\_\_\_

Signature / Reseller Stamp \_\_\_\_\_

3rd - Reseller

Please send this copy filled within 15 days to **BALDAN**.



**BALDAN IMPLEMENTOS AGRÍCOLAS S/A.**

Av. Baldan, 1500 | Nova Matão | CEP: 15993-900 | Matão-SP | Brasil  
Phone: (0\*\*16) 3221-6500 | Fax: (0\*\*16) 3382-6500  
Home Page: [www.baldan.com.br](http://www.baldan.com.br) | e-mail: [sac@baldan.com.br](mailto:sac@baldan.com.br)  
Export: Phone: 55 16 3321-6500 | Fax: 55 16 3382-4212 | 3382-2480  
e-mail: [export@baldan.com.br](mailto:export@baldan.com.br)

THE STAMP WILL BE PAID BY:

**RESPONSE CARD**  
NO STAMPING IS REQUIRED

1.74.05.0059-5  
AC MATÃO  
ECT/DR/SP





Avenida Baldan, 1500  
Nova Matão  
15.993-900  
Matão/SP - Brasil  
sac@baldan.com.br  
export@baldan.com.br

+55 16 3221 6500  
[baldan.com.br](http://baldan.com.br)