

Instruction Manual



PDLS

Agricultural Front Attachments for tractors

> > BALDAN

INTRODUCTION

We thank you for the preference and congratulate your excellent choice in acquiring an implement of outstanding quality, manufactured in accordance with the advanced technology of **BALDAN IMPLEMENTOS AGRÍCOLAS S/A.**

This manual will assist you, in proceeds necessities, since when you bought until the operational proceeds application, security and maintenance.

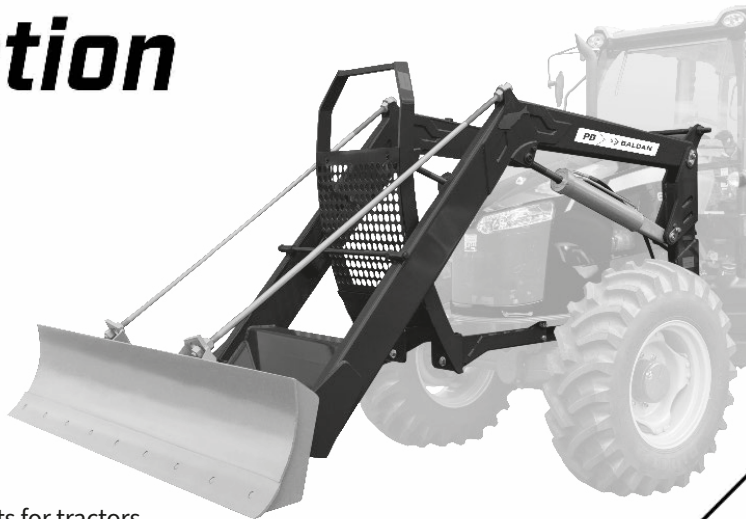
The **BALDAN** guarantees that deliver this implement to the dealer, working properly, and in perfect conditions.

The dealers it's under the responsibility to keep the protection and conservation while keep the implement in your stock, and than, to assembly, tighten, lubrication and overhaul.

On time of the technical deliver, the dealer must to have conducted the user customer about the manutentation, safety, and your obligations in a possible technical assistance, the obligation to see the warranty terms and read the instruction manual. Any solicitation of warranty, please contact our Baldan technical service, by your Baldan dealer that you bought our implement. Reaffirm the necessity to read carefully of warranty certificate and note all of items from this manual, therefore you will increase the working life of your equipment.



Instruction Manual



PDLS

Agricultural Front Attachments for tractors

BALDAN IMPLEMENTOS AGRÍCOLAS S/A.
CNPJ: 52.311.347/0009-06
Insc. Est.: 441.016.953.110



Scan the QR Code on the
identification plate of your
device and access this
Instruction Manual online.

> > BALDAN

INDEX

01.Safety rules	5 - 9
02.Components.....	10
<i>Agricultural Front Attachments for Tractors</i>	<i>10</i>
03.Assembly	11
04.Pump assembly	11
<i>Splined axle system</i>	<i>11</i>
<i>Pump system with shaft and clutch</i>	<i>12</i>
<i>Assembly of side frames and mobile support.....</i>	<i>13 - 15</i>
<i>Hydraulic system assembly.....</i>	<i>16</i>
<i>Connection scheme for single and double hydraulic controls.....</i>	<i>17</i>
<i>BT Hydraulic System Assembly</i>	<i>18</i>
<i>Assembly of the BT hydraulic scheme for tractors with hydraulic outlet at the rear of the tractor</i>	<i>18</i>
<i>Assembly of the BT hydraulic scheme connected to the pressure and return output of the tractor frame</i>	<i>19</i>
<i>Assembly of the BT hydraulic scheme with valve coupled to the tractor's hydraulic control.....</i>	<i>19</i>
<i>Loader assembly.....</i>	<i>20</i>
<i>Assembly of scarifiers fork agricultural.....</i>	<i>21</i>
05.Adjustments and operations	22
<i>Adjusting the loader in the vertical plane</i>	<i>22</i>
<i>Adjusting the loader in the horizontal plane.....</i>	<i>22</i>
<i>Operations for deforestation</i>	<i>23 - 24</i>
<i>Instruction for regulating the control valve pressure</i>	<i>25</i>
06.Lubrication.....	26
<i>Lubrication points.....</i>	<i>26</i>
<i>Oil change.....</i>	<i>27</i>
<i>Table of greases and equivalents.....</i>	<i>27</i>
<i>Return filter.....</i>	<i>28</i>

INDEX

07.Cleaning.....	28
<i>Maintenance table.....</i>	<i>29-30</i>
08.Optional.....	31
<i>Optional system.....</i>	<i>31</i>
<i>Optional accessories.....</i>	<i>31</i>
09.Identification	32
<i>Identification plate</i>	<i>32</i>
<i>Product identification</i>	<i>33</i>
<i>Notes.....</i>	<i>34-35</i>
<i>Certificate of warranty.....</i>	<i>36-42</i>

01. SAFETY RULES



THIS SYMBOL INDICATES IMPORTANT SAFETY WARNING. IN THIS MANUAL, WHENEVER YOU FIND IT, READ THE FOLLOWING MESSAGE CAREFULLY AND PAY ATTENTION TO THE POSSIBILITY OF PERSONAL ACCIDENTS.

ATTENTION

- Carefully read the instructions manual to learn about the recommended safety practices.



ATTENTION

- Only start to operate the tractor when you are properly seated and with the seat belt locked.



ATTENTION

- Do not transport people or equipment on the tractor.



ATTENTION

- There are risks of severe injuries due to tipping when working in sloped terrains.
- Do not over speed.



01. SAFETY RULES

ATTENTION

- Before performing any maintenance in your equipment, make sure it is properly stopped.
- Avoid being run over.



ATTENTION

- Do not work with the tractor if the front has insufficient ballast to the rear equipment.
- Should there be a trend to lift, add weights or ballasts to the front or the front wheels.



ATTENTION

- Always maintain places of access and work free of residues such as oil or grease to prevent accidents.



ATTENTION

- Before commencing work or transportation to equipment, check for any nearby persons or obstructions.



FOLLOW ALL RECOMMENDATIONS, WARNINGS AND SAFE PRACTICES RECOMMENDED IN THIS MANUAL, UNDERSTAND THE IMPORTANCE OF YOUR SAFETY. ACCIDENTS MAY LEAD TO DISABILITY OR INCLUDING DEATH. REMEMBER, ACCIDENTS CAN BE AVOIDED!

01. SAFETY RULES

ATTENTION

- Hydraulic oil works under pressure and may cause serious injuries if there are any leakages.
- Periodically check hoses for conservation. If there are any sign of leakage, replace them immediately. Before connecting or disconnecting hydraulic hoses, relief system pressure by activating the command with the tractor power switched off.



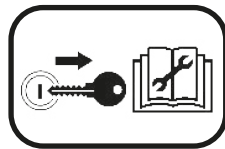
ATTENTION

- Always keep away from the active element of the planer (blade knife), it is sharp and can cause accidents.
- When performing any service on the blade knife, wear safety gloves on your hands.



ATTENTION

- Remove the ignition key before performing any maintenance on the equipment. Protect yourself from possible injury or death caused by an unforeseen equipment start up.
- If the equipment is not properly engaged, do not start the tractor.




















ALCOHOLIC BEVERAGES OR SOME MEDICATIONS CAN GENERATE LOSS OF REFLECTIONS AND CHANGE THE PHYSICAL CONDITIONS OF THE OPERATOR. THEREFORE, NEVER OPERATE THIS EQUIPMENT UNDER THE USE OF THESE SUBSTANCES.



WARNING

Incorrect handling of this equipment could result in serious or fatal accidents. Before putting the implement into operation, carefully read the instructions contained in this manual. Make sure that the person responsible for the operation is instructed on the correct, safe handling and that the instruction manual for this machine has been read and understood.

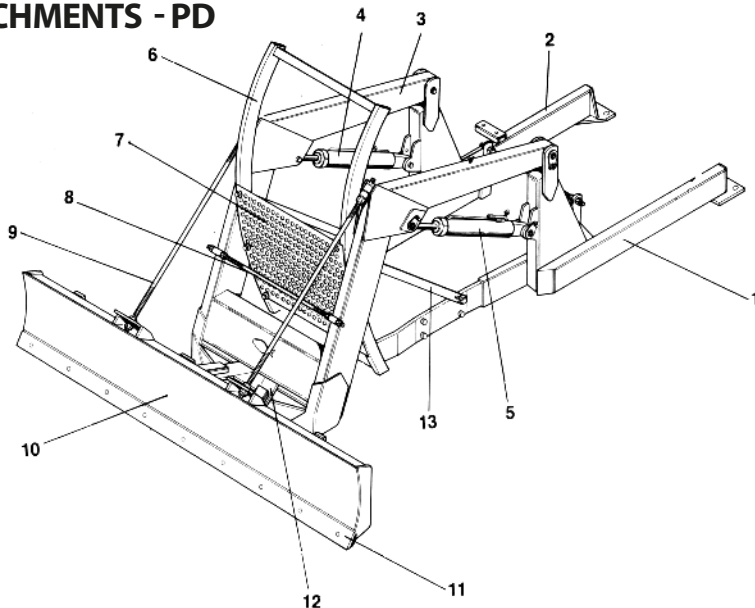
- 01-  When operating the implement, do not allow people to stand too close to or on top of it.
- 02-  When carrying out any assembly and disassembly work on the discs, wear protective gloves for your hands.
- 03-  Before connecting or disconnecting the hydraulic hoses, relieve the system pressure by activating the command with the tractor off.
- 04-  Periodically check the condition of the hydraulic hoses. If there are signs of oil leakage, replace the hose immediately, as the oil works under high pressure and can cause serious accidents.
- 05-  Do not wear clothes that are too loose, as they could get tangled in the implement.
- 06-  When starting the tractor engine, be properly seated in the operator's seat and aware of the complete knowledge of the correct and safe handling of both the tractor and the implement. Always place the gearshift lever in neutral, disconnect the PTO control gear and place the hydraulic controls in neutral.
- 07-  Do not start the tractor engine indoors, without adequate ventilation, as the exhaust gases are harmful to health.
- 08-  When maneuvering the tractor to hitch the implement, make sure you have the necessary space and that no one is too close, always maneuver at idle and be prepared to brake in an emergency.

- 09-  Do not make adjustments while the implement is in operation.
- 10-  When working on sloping terrain, proceed with care, always seeking to maintain the necessary stability. In case of unbalance, reduce the acceleration, turn the wheels towards the slope of the terrain and never lift the implement.
- 11-  Always drive the tractor at speeds compatible with safety, especially when working on rough terrain or on slopes, keep the tractor always engaged.
- 12-  When driving the tractor on roads, keep the brake pedals interlocked.
- 13-  Do not operate the tractor with a light front. If the front tends to lift, add more weight to the front or front wheels.
- 14-  When performing operations with plotted tractors, check the blade adjustment for the type of operation to be performed. Ignoring this warning could cause damage to the PD or tractor.
- 15-  When leaving the tractor, place the gearshift lever in neutral and apply the parking brake. Never leave implements attached to the tractor in the raised position of the hydraulic system.
- 16-  Alcoholic beverages or some medications can cause loss of reflexes and change the operator's physical conditions. Therefore, never operate this equipment, over the use of these substances.
- 17-  Read or explain all of the above procedures to the user who cannot read.

*In case of doubt, consult the After Sales.
Telephone: 0800-152577 / E-mail: posvenda@baldan.com.br*

02. COMPONENTS

- 01 - Left Lateral Gang
- 02 - Right Lateral Gang
- 03 - Mobile Support
- 04 - Right Piston
- 05 - Left Piston
- 06 - Protection Guide
- 07 - Protection Screen
- 08 - Mobile support adjustment rod
- 09 - Loader stabilizer rod
- 10 - Loader blade
- 11 - Blade knife
- 12 - Horizontal and vertical adjustment support
- 13 - Protective screen guide support



03. ASSEMBLY

- 01 - Check the parts with the list inside the packing box.
- 02 - Place the tractor on a level and clean place.
- 03 - Remove the tractor's front counterweights and other components if necessary (such as headlights, radiator protection grille, etc.)

04. PUMP ASSEMBLY

SPLINED AXLE SYSTEM

- 01 - Fix the flange (1), figure 2, on the tractor's crankshaft pulley with the corresponding screws.
- 02 - Place the splined shaft (2) together with the bushing (3) on the flange.
- 03 - Fix the complete hydraulic pump (4) on the tractor's front support (with the support (5) or on the tractor's frame) with the screws.
- 04 - After installing the pump, leave a gap of 3mm between the shaft and the flange, as shown in figure 2. To adjust this gap, change the lock ring (6) to one of the 4 slots on the shaft, as shown in figure 2.



IMPORTANT

Pump shaft and flange must work aligned and free.

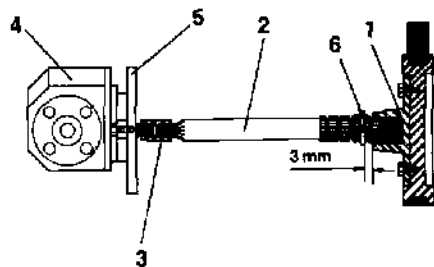
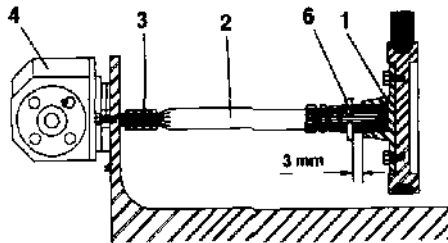


Figure 2

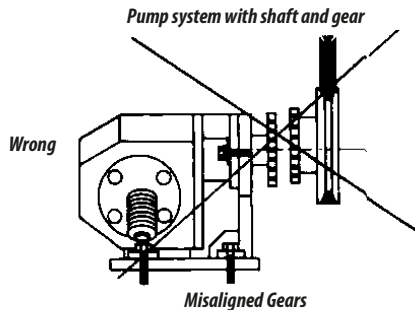
Pump coupling on tractors that use pump support (splined shaft pump).



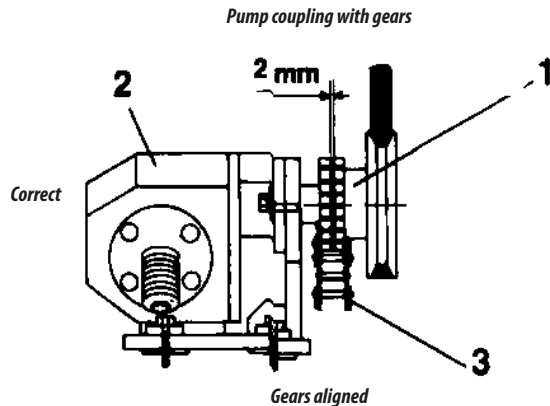
Pump coupling to the tractor housing. (Does not use pump support).

PUMP SYSTEM WITH SHAFT AND CLUTCH

- 05 - Couple the gear (1), figure 3, on the crankshaft shaft flange.
- 06 - Fix the complete hydraulic pump (2) to the tractor housing with the corresponding screws and connect the gears using the chain (3).
- 07 - After placing the pump, leave a gap of 2mm between the gears.
- 08 - Connect the pressure hose to the pressure outlet of the pump.
- 09 - Connect the suction hose to the suction inlet of the pump.



Figures 3



IMPORTANT

The gears must work in line with each other, for this, use a shim in the pump.



BALDAN

Instruction Manual

ASSEMBLY OF SIDE FRAMES AND MOBILE SUPPORT

- 10 - Attach the right and left side supports (1) to the tractor's rear axle, as per figures 4, 5, 6, 7 and 8. (Note in the figures the assembly for each type of support and tractor).
- 11 - Place the right and left sides (2), fixing them at the back on the support and at the front of the tractor housing with the screws (prisoners).
- 12 - Place the mobile support (3) on the sides through the pin (4).
- 13 - Fix the protection screen (5) on the supports on the front of the tractor and lock them on the sides with the reinforcement (6).
- 14 - If the plane is equipped with reinforcing bars, fix it between the sides using the nuts (7).
- 15 - Place the right and left pistons (8), with the cylinder base fixed on the side through the pin (9) and the rod fixed in the mobile support through the pin (10), locking with the screw.
- 16 - Retighten all screws.

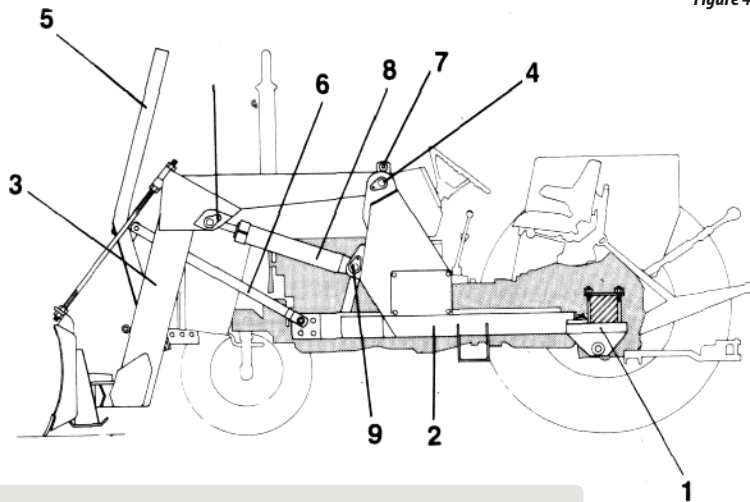
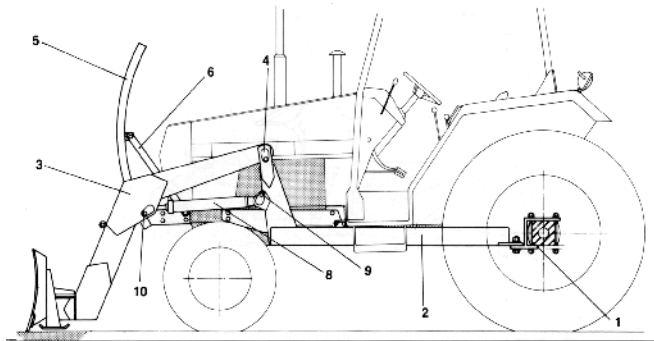


Figure 4

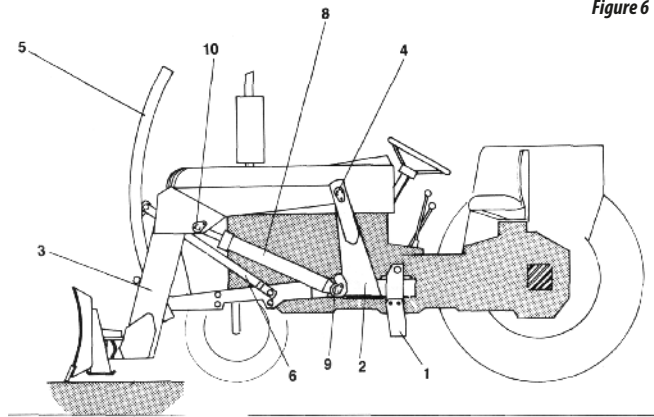
Loader assembly with straight support (1), mounted under the tractor's rear axle through screws or prisoner.

Figure 5



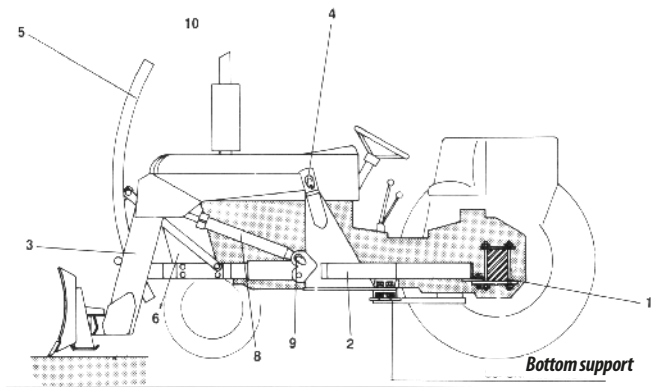
Loader assembly with type C support (1), mounted under the tractor's rear axle through screws or stud.

Figure 6



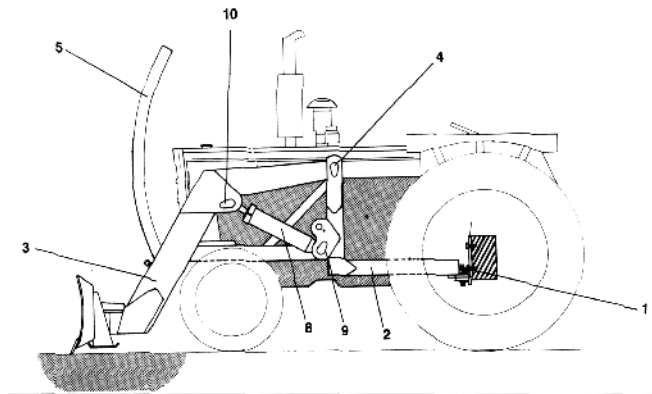
Loader assembly with support (1), for short side frame, mounted on the tractor frame.

Figure 7



Assembly of the loader with vertical support (1) and lower support of the frames mounted on the tractor frame and on the tractor's rear axle.

Figure 8



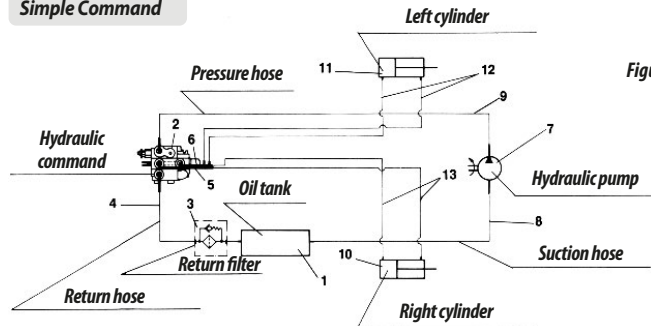
Loader assembly with vertical support (1), mounted on the front side of the tractor's rear axle through screws.

HYDRAULIC SYSTEM ASSEMBLY

- 17 - Fix the oil tank (1), figure 9. (When it is on the side with a matching tank, it leaves the factory assembled).
- 18 - Fix the complete hydraulic control (2).
- 19 - Screw the head with return filter (3) into the oil tank.
- 20 - Connect the return hose (4) between the tank and the cylinder head.
- 21 - Screw the upper (5) and lower (6) pipes into the hydraulic control.

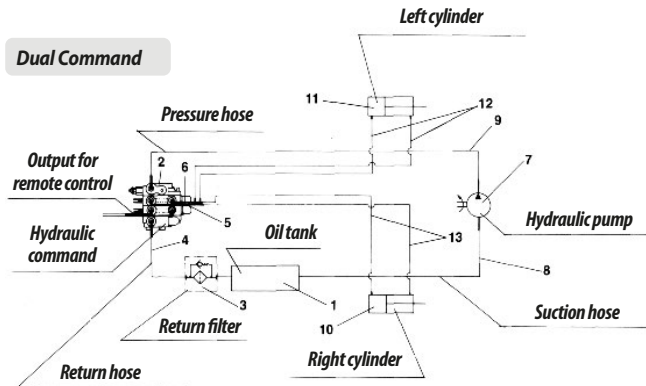
- 22 - Connect the hydraulic pump (7) to the tank with the suction hose (8).
- 23 - Connect the hydraulic pump (7) to the hydraulic control with the pressure hose (9)
- 24 - Connect the pipes (5 and 6) to the right (10) and left (11) pistons through the hoses (12 and 13).
- 25 - Place the lever on the hydraulic control.

Simple Command



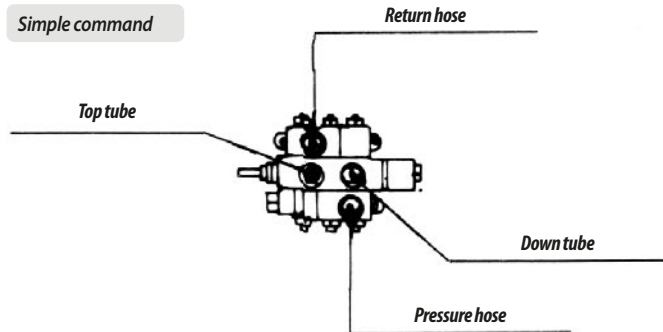
Figures 9

Dual Command

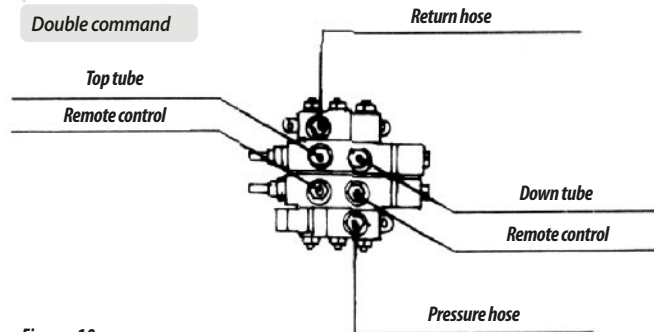


CONNECTION SCHEME FOR SINGLE AND DOUBLE HYDRAULIC CONTROLS

Simple command



Double command



Figures 10

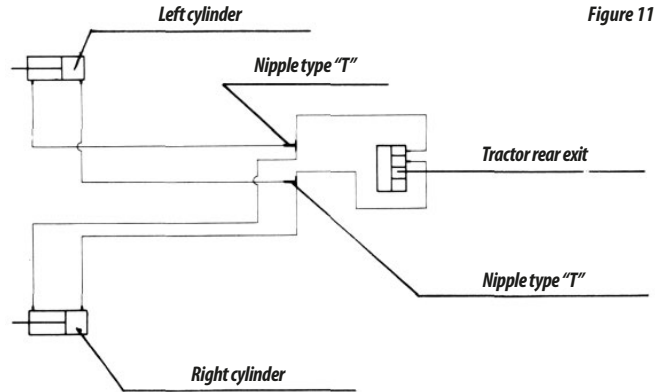
26 - Fill the oil tank until it reaches the level. Use only recommended oils. Check table 1 for oil equivalents on page 27.

27 - Place the cap on the oil tank.

28 - The assembly of the BT hydraulic system varies according to the tractor model, below we will show the assembly of the models:

ASSEMBLY OF THE BT HYDRAULIC SCHEME FOR TRACTORS WITH HYDRAULIC OUTLET AT THE REAR OF THE TRACTOR

- 29 - Make sure the male quick coupler provided by Baldan connects to the female coupler of the tractor. If this does not occur, replace the tractor's female hitch with a similar Baldan that comes with the system.
- 30 - Connect the hoses to the rear outlet of the tractor, passing them to the front of the tractor.
- 31 - Attach the "T" nipples (1), figure 11, to the ends of the hoses, making the connection with the right and left pistons through the hoses.



Hydraulic diagram BT, for tractors with hydraulic outlet at the rear of the tractor.

ASSEMBLY OF THE BT HYDRAULIC SCHEME CONNECTED TO THE PRESSURE AND RETURN OUTPUT OF THE TRACTOR FRAME

- 32 - Remove the pressure outlet cap from the tractor's crankcase, connect the pressure nipple and fix the pressure hose.
- 33 - Remove the return inlet cap from the tractor's crankcase, connect the return nipple and fix the return hose.

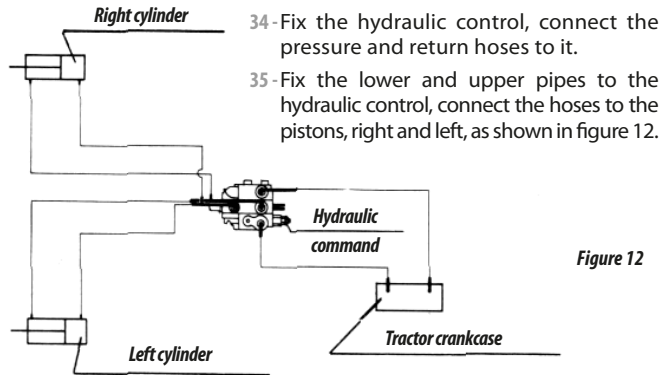


Figure 12

Hydraulic diagram BT, connected to the pressure outlet and return of the tractor frame.

ASSEMBLY OF THE BT HYDRAULIC SCHEME WITH VALVE COUPLED TO THE TRACTOR'S HYDRAULIC CONTROL

- 36 - Remove the tractor's hydraulic control cover, insert the valve (intake body), replace the cover and secure it through the Baldan studs.
- 37 - Fix the distributor, connect the valve hoses to the oil distributor, connect the right and left piston hoses to the oil distributor as shown in figure 13.

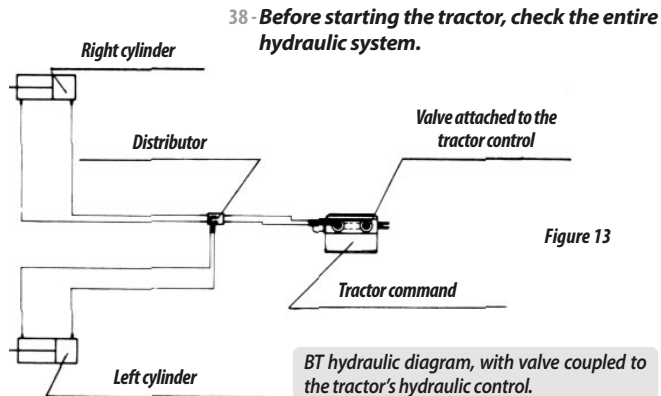


Figure 13

BT hydraulic diagram, with valve coupled to the tractor's hydraulic control.

Figure 14

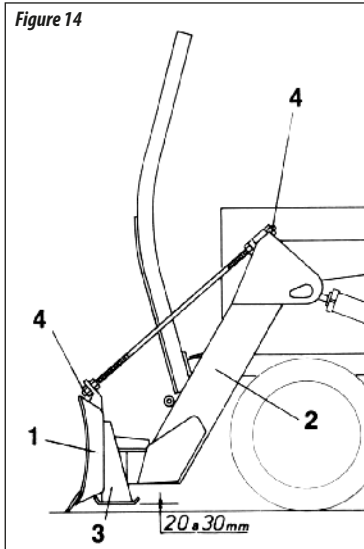
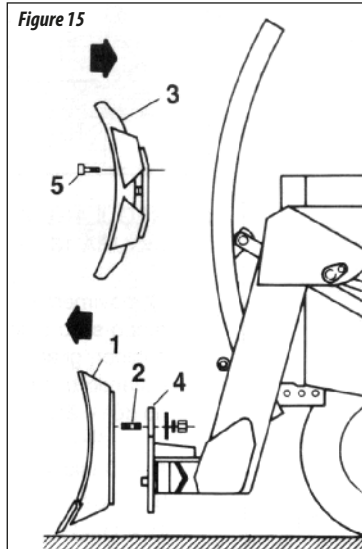


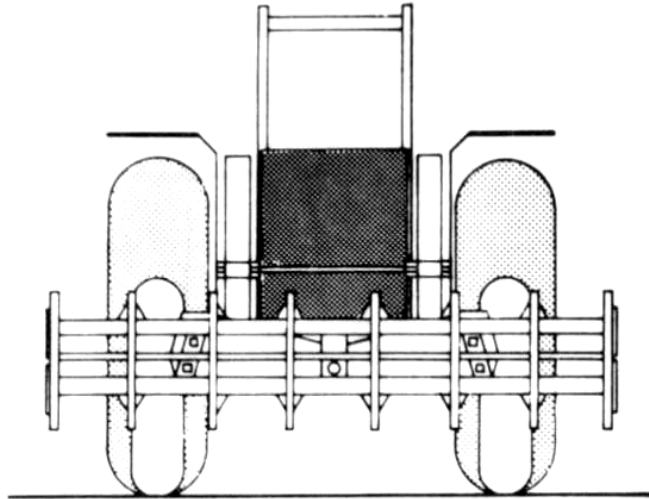
Figure 15



- 39 - Place the blade already attached to the horizontal and vertical tilt support (1), figure 14, on the mobile support (2), with the respective pins.
- 40 - Fix the support supports (3) at the ends of the blade, adjusting them from 20 to 30mm from the ground, as shown in figure 14.
- 41 - If the loader is equipped with a stabilizer bar, insert it into the mobile support (2) up to the blade (1), securing it with the nuts (4).
- 42 - Retighten all nuts, bolts, studs, pins and hose terminals on the front farm planer.
- 43 - Check all hose connections and make sure they are not inverted or twisted.

- 44 - Remove the blade (1), figure 15, the stud (2) and fix the rake (3) to the incline adjuster (4) using the screw (5).
- 45 - The agricultural scarifier windrower must work only in the vertical position, as shown in figure 16.

Figure 16

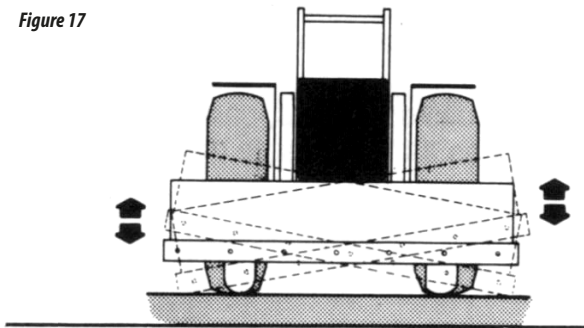


05. ADJUSTMENTS AND OPERATIONS

ADJUSTING THE LOADER IN THE VERTICAL PLANE

- 01 - To make the control cord, level curves or small shoulders, the loader must be inclined in the vertical plane.
- 02 - To do this, just loosen the blade stud nuts and turn the loader in the desired position. Then retighten the nuts.
- 03 - For these services the shoes must be removed.

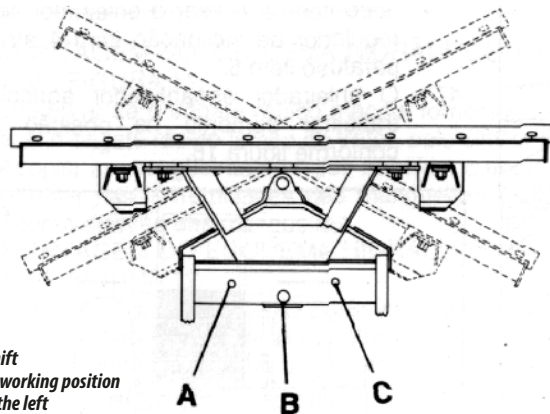
Figure 17



ADJUSTING THE LOADER IN THE HORIZONTAL PLANE

- 04 - The movement of the planer in the horizontal position is obtained by removing the union pin from the mobile support to the regulating support, turning the planer to the left or to the right. With the implement in the desired position, then replace the union pin.

Figure 18



A = Right shift
B = Normal working position
C = Shift to the left

OPERATIONS FOR DEFORESTATION

- 05 - Do not pack the tractor and then crash it into a tree.
- 06 - The tractor must be moved forward, moving the blade upwards.
- 07 - If the tree is very thick, a furrow must be dug on the side where the tree will be pushed.

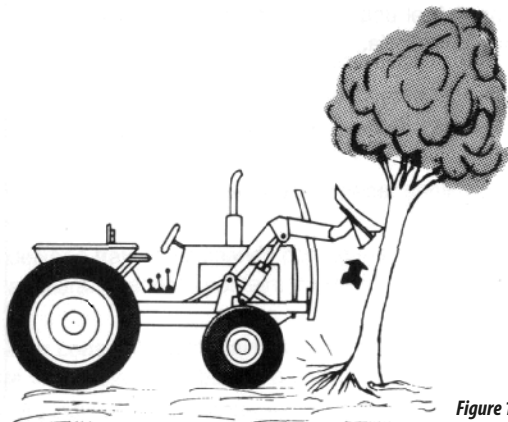


Figure 19

- 08 - To cut down a tree, you should always look for a medium support point, considering its height and diameter, thus facilitating the work without damaging the tractor.
- 09 - Always use the central part of the loader, keeping the horizontal position, as shown in figure 20.

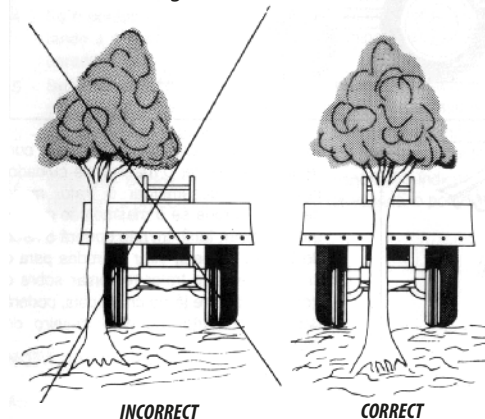


Figure 20

- 10 - Never push a dry tree, as dry branches could fall on the operator. In this case it is advisable to use a steel cable or chain and pull from a distance.
- 11 - When pulling the tree with the head or chain, extreme care must be taken, and the tractor must be released very slowly, because if it cannot start, it will not run the risk of spinning, that is, turning the wheels to the right. air. Do not let the tractor remount on the tree

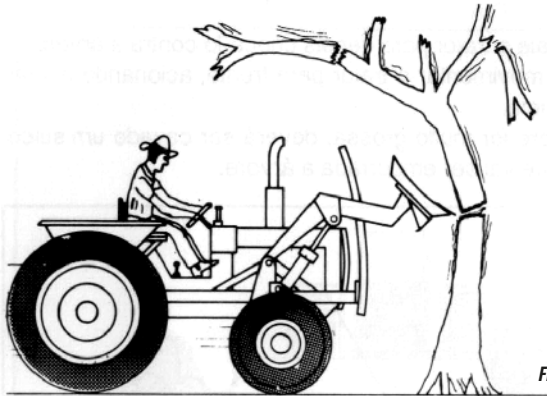


Figure 21

trunk already on the ground, as this could damage the crankcase or the tractor's rear axle.

- 12 - When operating with the blade or shovel and the piston rods reach the end of their stroke, or when the safety valve opens, the lever must be relieved to avoid overheating the oil.
- 13 - Always operate the machine at 1,800RPM. When using another type of implement, such as trailing implements, remove the blade or mechanical shovel to reduce the weights on the front wheels.

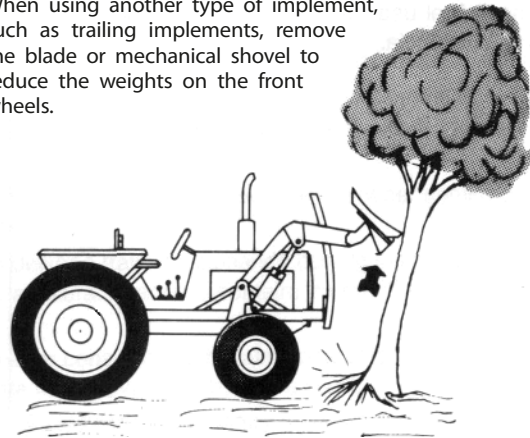


Figure 22

INSTRUCTIONS FOR REGULATING THE CONTROL VALVE PRESSURE

- 14 - Run the tractor to heat the oil, then turn off the tractor.
- 15 - Remove the hose or the output pipe of the command that sends the oil to the pistons and place a pressure gauge on it.
- 16 - Run the tractor and activate the control lever, checking which side is sending pressure on the pressure gauge.
- 17 - Locate the position of the lever, hold it pressed and check the pressure gauge reading until how many kilograms per square centimeter (kg/cm²) it has reached.
- 18 - Once the lever has been activated and the pointer has reached the indicated pressure, it must remain semi-mobile, maintaining constant pressure. This happens when the pump is perfect.
- 19 - If the pointer oscillates a lot and it is not possible to read it, you should leave the tractor running for a few minutes, moving the control lever to eliminate the existing air. Only take the reading when the pressure gauge pointer is almost stopped.
- 20 - If the gauge pointer reaches the indicated pressure and does not remain constant with the lever pulled, that is, the pointer starts to drop, it is proof that the pump has lost its pressure. In this case, the pump must be replaced.
- 21 - If the lever is activated and the gauge pointer does not reach the indicated pressure but maintains the pressure, in this case, the relief valve must be adjusted until the pointer reaches the pressure indicated in the manual.
- 22 - Once the lever is activated and the pressure gauge indicates a pressure of less than 80 kilograms per square centimeter (kg/cm²) and after adjusting the valve, the needle does not rise, everything indicates that the pump is weak.



IMPORTANT

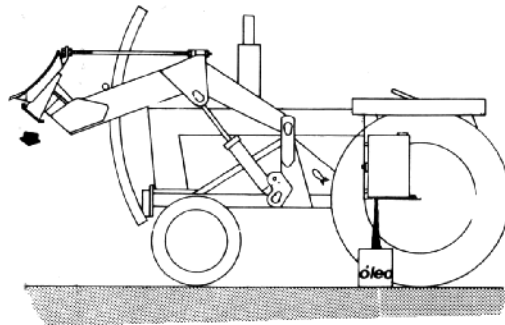
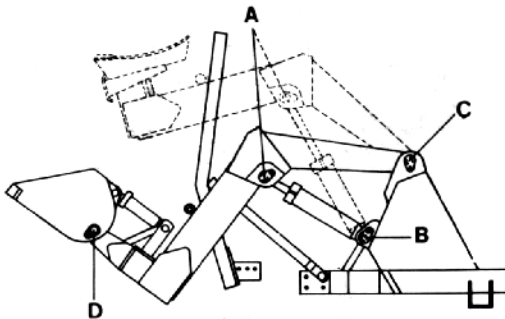
When replacing the pump proceed as follows:

- Release the relief valve
- Install the new pump
- Adjust the pressure again
- If, by chance, replacing the pump without having released the relief valve, there is a risk of damaging the new pump.

06. LUBRICATION

- 01 - Lubrication is essential for a good performance and greater durability of the moving parts of the loader.
- 02 - Before starting work, carefully lubricate all grease fittings, observing the relubrication intervals, making sure of the quality of the lubricant, regarding its efficiency and purity, avoiding using products contaminated by water, earth, etc.
- 03 - Before lubrication, clean all grease fittings with a clean, lint-free cloth and replace any that are damaged.
- 04 - Lubricate all grease fittings every 8 working hours.

LUBRICATION POINTS



OIL CHANGE

- 05 - Periodically check the oil level in the tank, refill whenever necessary.
- 06 - Replace oil every 1200 working hours.
- 07 - When using a particular brand of oil, avoid topping up with oil of another brand and specification. Follow the table on the side.
- 08 - **To change the oil proceed as follows:**
 - Place the tractor in a flat and clean place, as shown in figure 24.
 - Warm up the oil by running the tractor for a few minutes or change it after the workday.
 - Turn off the tractor engine, chock the wheels and apply the brakes.
 - Remove the tank cap and the lower oil drain plug.
 - With the engine still off, activate the planer control lever and let it descend under its own weight.
 - After draining, remove the oil filter and do a

general cleaning on it, replace the filter if it is damaged.

- If it is a BT hydraulic system (tractor pump), change the oil according to the tractor manufacturer's instruction manual.
- Replace the lower tank plug.
- Refill the tank until the oil reaches the level.
- Replace the tank cap and run the blade for a few minutes, then check the oil level, if necessary add more oil.



ATTENTION

Do not start the tractor engine while draining oil from the tank, this will damage the hydraulic pump.

TABLE OF GREASES AND EQUIVALENTS

<i>Manufacturer</i>	<i>Recommended grease types</i>
<i>Petrobrás</i>	<i>Lubrax GMA-2</i>
<i>Atlantic</i>	<i>Litholine MP 2</i>
<i>Ipiranga</i>	<i>Ipiflex 2</i>
<i>Castrol</i>	<i>LM 2</i>
<i>Mobil</i>	<i>Grease MP</i>
<i>Texaco</i>	<i>Marfak 2</i>
<i>Shell</i>	<i>Alvania EP 2</i>
<i>Esso</i>	<i>Multi H</i>
<i>Bardahl</i>	<i>Maxlub APG-2EP</i>
<i>Valvoline</i>	<i>Palladium MP-2</i>
<i>Petronas</i>	<i>Tutela Jota MP 2 EP</i>
	<i>Tutela Alfa 2K</i>
	<i>Tutela KP 2K</i>

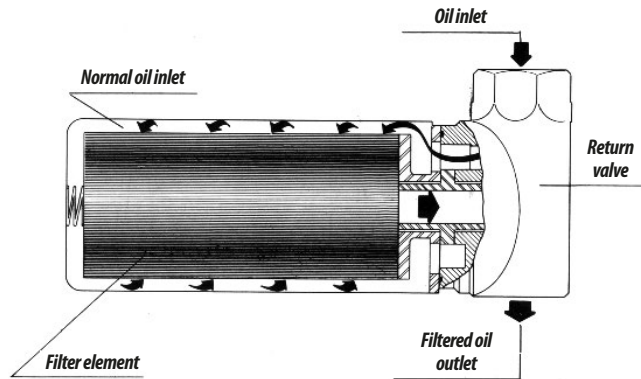
Table 3



If there are other manufacturers and or equivalent brands that are not listed in the table, consult the manufacturer's technical manual.

RETURN FILTER

- 09 - Change the oil filter in the first 50 hours of work with the loader. The next changes must be carried out within a maximum interval of 250 working hours.
- 10 - Observe the filter change intervals correctly, to prevent the oil from passing through it without being filtered, damaging the hydraulic system.



07. CLEANING

- 01 - When assembling and disassembling any part of the loader, use proper tools and methods.
- 02 - The assembly and disassembly work must be carried out in a clean and free of impurities place. The workplace must not be located near machines that give off metal fragments or dirt.
- 03 - Remove and clean the air breather from the tank daily using diesel oil.
- 04 - When connecting or disconnecting hydraulic hoses, do not let the ends touch the ground and before connecting them, wipe the ends with a clean, lint-free cloth. **(Do not use burlap)**
- 05 - When the plane is going to be inactive for a long period, do a general cleaning on it, checking if the paint has not worn out. If this has happened, apply a full coat of protective oil over the entire plane. Check the blades, give them a coat of paint and apply protective oil.

MAINTENANCE TABLE - PART I

<i>Defects</i>	<i>Probable Causes</i>	<i>Solutions</i>
<i>The implement does not remain in the desired position.</i>	<i>Internal leak in cylinder. Internal leakage in the control valve.</i>	<i>If there is a leak, check the plunger repair kit and connection.</i>
<i>Leakage at both ends of the spool.</i>	<i>Sealing rings on the valve body.</i>	<i>Replace o-rings.</i>
<i>Stuck spools.</i>	<i>Oil passage through the seal and spool cap.</i>	<i>Remove the cap, if there was oil, replace the spool o-rings. Check that the retainer and valve discharge port are not damaged, which could be causing excessive back pressure.</i>
<i>Spring centered spools do not return to center position.</i>	<i>A - Broken springs</i>	<i>A - Replace the damaged springs.</i>
	<i>B - Jammed spools.</i>	<i>B - Send the valve to Baldan so that the necessary repairs can be carried out.</i>
<i>The hydraulic system does not operate by actuating the valve.</i>	<i>A - Pump defective.</i>	<i>A - Check the hydraulic pressure at the pump discharge.</i>
	<i>B - Cylinder defect.</i>	<i>B - Repair or replace the cylinder.</i>
	<i>C - Load greater than system capacity.</i>	<i>C - Check the implement manual.</i>
	<i>D - Relief valve does not operate properly.</i>	<i>D - Repair and adjust the relief valve again.</i>
	<i>E - Dirt between relief valve piston and valve seat.</i>	<i>E - Disassemble, clean and reassemble.</i>
	<i>F - Valve body is cracked.</i>	<i>F - Replace the valve.</i>

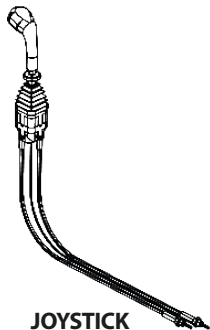
MAINTENANCE TABLE - PART II

<i>Defects</i>	<i>Probable Causes</i>	<i>Solutions</i>
<i>Decentralized joystick.</i>	<i>Adjustment of the nut at the end of the cable at the input of the unregulated command.</i>	<i>Adjust the cable nut at the control input to center the joystick.</i>
<i>Hard joystick.</i>	<i>Cable over specified length by the project makes a good positioning difficult the same.</i>	<i>Verify that the cable is as determined by engineering of project.</i>
	<i>Joystick support positioned close to the command causes the cable to bend.</i>	<i>Position the joystick support in such a way that the cable is gently curved.</i>
	<i>Cable positioned improperly due to incorrect positioning in the mounting.</i>	<i>Mount the cable correctly so that it makes only 1 bend smooth from joystick output to controller input.</i>

08. OPTIONAL

OPTIONAL SYSTEM

01 - The **PDLS** has an optional joystick system that can be purchased according to the work needs.



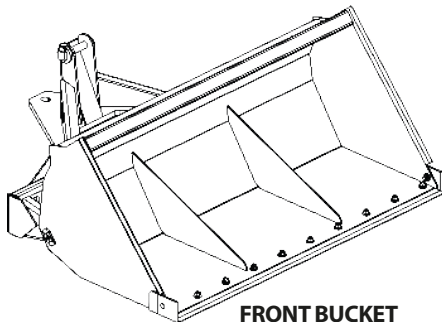
JOYSTICK



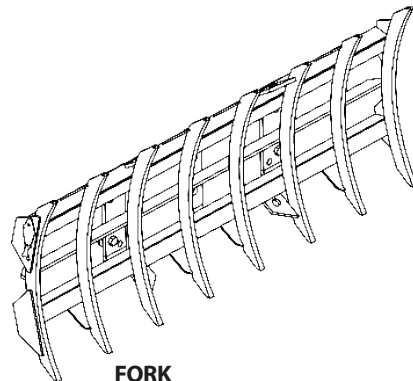
See available tractor models.

OPTIONAL ACCESSORIES

01 - **PDLS** has optional accessories that can be purchased according to the work need.



FRONT BUCKET



FORK



See Front Bucket and fork models available for each tractor model.

09. IDENTIFICATION

IDENTIFICATION PLATE

01 - To consult the parts catalog or request Baldan technical assistance, always indicate the model (1), serial number (2) and date of manufacture (3), which can be found on the identification plate of your equipment.

ALWAYS REQUIRE BALDAN ORIGINAL PARTS



PUBLICATIONS

Code: 60550100005
CPT: PDLS06216



ATTENTION

The drawings contained in this instruction manual are for illustrative purposes.



CONTACT

In case of doubt, never operate or handle your equipment without consulting the After Sales.
Phone: 0800-152577
e-mail: posvenda@baldan.com.br

PRODUCT IDENTIFICATION

- Do the identification below to always have the properly informations about your equipment life time.

Owner: _____

Dealer: _____

Farm: _____ *City:* _____ *Country:* _____

Model: _____

Warranty: _____ *Serial Number:* _____

Purchase Date: _____ / _____ / _____ *Invoice Number:* _____

This image shows a blank sheet of white paper with horizontal ruling lines. The lines are evenly spaced and extend across the width of the page. There are no margins, text, or other markings on the paper.

This image shows a blank sheet of white paper with horizontal ruling lines. The lines are evenly spaced and extend across the width of the page. There are no margins, text, or other markings on the paper.

CERTIFICATE OF WARRANTY

BALDAN IMPLEMENTOS AGRÍCOLAS S/A ensures the dealer normal performance of the implement for a period of six (6) months as of the delivery date on the retail invoice to the first final consumer. During this period, **BALDAN** undertakes to repair defects in material and/or of manufacture of its liability, including labor, freight and other expenses of the dealer's liability.

In the warranty period, request and replacement of eventual defective parts shall be made to the dealer of the area, who will submit the faulty piece for **BALDAN** analysis. When this procedure is not possible and the resolving capacity of the dealer is exhausted, the dealer will request the support of **BALDAN** Technical Assistance through a specific form distributed to dealers. After analyzing the replaced items by Baldan Technical Assistance, and concluding that it is not a warranty, then the dealer will be responsible for the costs related to the replacement; as well as material expenses, travel including accommodation and meals, accessories, lubricant used and other expenses arising from the call out to Technical Assistance, and Baldan company is authorized to carry the respective invoice in the name of the resale. Any repair carried in the product within the dealer warranty deadline will only be authorized by **BALDAN** upon previous budget presentation describing parts and work to be performed.

The product is excluded from this term if it is repaired or modified by representatives not belonging to the **BALDAN** dealer network, as well as the application of non-genuine parts or components to the user's product. This warranty is void where it is found that the defect or damage is caused by improper use of the product, failure to follow instructions or inexperience of the operator.

It is agreed that this warranty does not cover tires, polyethylene tanks, cardan, hydraulic components, etc., which are equipment guaranteed by their manufacturers. Manufacturing and/or material defects, object of this warranty term, will not constitute, under any circumstances, grounds for termination of a purchase agreement, or for indemnification of any nature.

BALDAN reserves the right to change and/or perfect the technical characteristics of its products, without previous notice, and without obligation to proceed in the same way with the products previously manufactured.

INSPECTION AND DELIVERY CERTIFICATE

- **SERVICE BEFORE THE DELIVERY:** This equipment was very carefully prepared by the dealer's organization, inspected in all its parts in agreement with the manufacture's prescription.
- **DELIVERY SERVICE:** The user was informed about the current guarantee terms and instructed about maintenance care and utilization.
I confirm that I was informed about the current guarantee terms and instructed about the correct utilization and maintenance of this product.

Implement: _____ Serial number: _____

Date: _____ Nº Fiscal: _____ Revenda: _____

City: _____ State: _____

Owner: _____ Phone: _____

Address: _____ Number: _____

City: _____ State: _____

E-mail: _____ Date of sale: _____

1st - Owner

Signature / Stamp of Resale _____

INSPECTION AND DELIVERY CERTIFICATE

- **SERVICE BEFORE THE DELIVERY:** This equipment was very carefully prepared by the dealer's organization, inspected in all its parts in agreement with the manufacture's prescription.
- **DELIVERY SERVICE:** The user was informed about the current guarantee terms and instructed about maintenance care and utilization.
I confirm that I was informed about the current guarantee terms and instructed about the correct utilization and maintenance of this product.

Implement: _____ Serial number: _____

Date: _____ Nº Fiscal: _____ Revenda: _____

City: _____ State: _____

Owner: _____ Phone: _____

Address: _____ Number: _____

City: _____ State: _____

E-mail: _____ Date of sale: _____

2nd - Resale

Signature / Stamp of Resale _____

INSPECTION AND DELIVERY CERTIFICATE

- **SERVICE BEFORE THE DELIVERY:** This equipment was very carefully prepared by the dealer's organization, inspected in all its parts in agreement with the manufacture's prescription.
- **DELIVERY SERVICE:** The user was informed about the current guarantee terms and instructed about maintenance care and utilization.
I confirm that I was informed about the current guarantee terms and instructed about the correct utilization and maintenance of this product.

Implement: _____ Serial number: _____

Date: _____ Nº Fiscal: _____ Revenda: _____

City: _____ State: _____

Owner: _____ Phone: _____

Address: _____ Number: _____

City: _____ State: _____

E-mail: _____ Date of sale: _____

3rd - Manufacturer

Please send completed within 15 days.

Signature / Stamp of Resale _____

1.74.05.0059-5

AC MATÃO
ECT/DR/SP

RESPONSE CARD

NOT REQUIRED SEAL

SEAL WILL BE PAID BY:



BALDAN

BALDAN IMPLEMENTOS AGRÍCOLAS S/A.

Av. Baldan, 1500 | Nova Matão | CEP: 15993-900 | Matão-SP | Brasil

Telephone: (0**16) 3221-6500 | Fax: (0**16) 3382-6500

Home Page: www.baldan.com.br | e-mail: sac@baldan.com.br

Export: Telephone: 55 16 3321-6500 | Fax: 55 16 3382-4212 | 3382-2480
e-mail: export@baldan.com.br



Avenida Baldan, 1500
Nova Matão
15.993-900
Matão/SP - Brasil
sac@baldan.com.br
export@baldan.com.br

+55 16 3221 6500
baldan.com.br