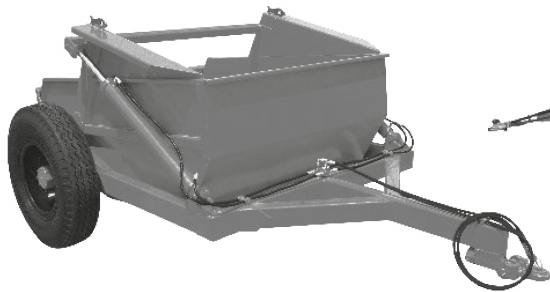


Instruction Manual

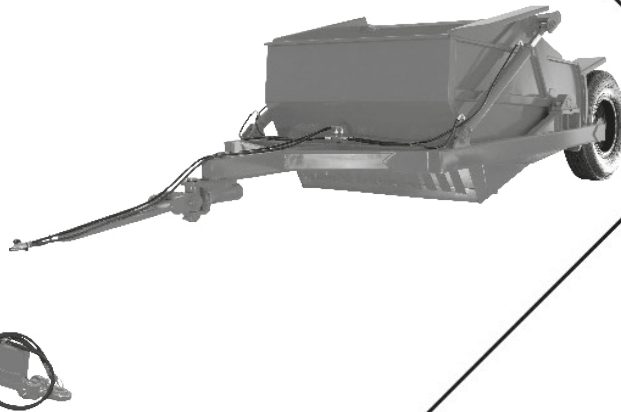


RACR-L

Remote Control Agricultural Scraper Unit - Side Wheels

RACR-T

Remote Control Agricultural Scraper Unit - Rear Wheels



 **BALDAN**

INTRODUCTION

We thank you for the preference and congratulate your excellent choice in acquiring an implement of outstanding quality, manufactured in accordance with the advanced technology of **BALDAN IMPLEMENTOS AGRÍCOLAS S/A**.

This manual will assist you, in proceeds necessities, since when you bought until the operational proceeds application, security and maintenance.

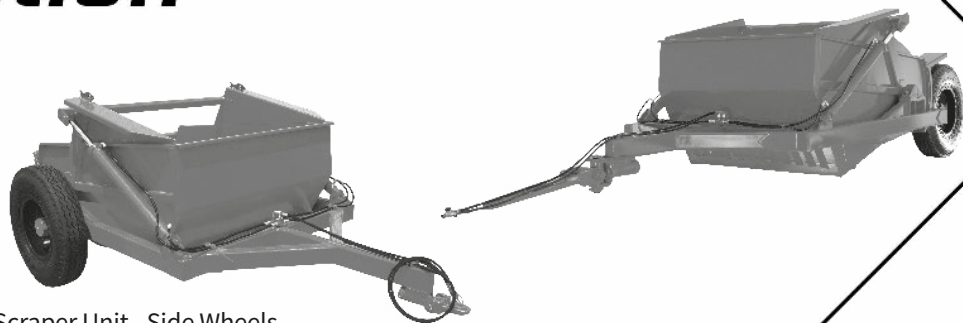
The **BALDAN** guarantees that deliver this implement to the dealer, working properly, and in perfect conditions.

The dealers it's under the responsibility to keep the protection and conservation while keep the implement in your stock, and than, to assembly, tighten, lubrication and overhaul.

On time of the technical deliver, the dealer must to have conducted the user customer about the manutentation, safety, and your obligations in a possible technical assistance, the obligation to see the warranty terms and read the instruction manual. Any solicitation of warranty, please contact our Baldan technical service, by your Baldan dealer that you bought our implement. Reaffirm the necessity to read carefully of warranty certificate and note all of items from this manual, therefore you will increase the working life of your equipment.



Instruction Manual



RACR-L

Remote Control Agricultural Scraper Unit - Side Wheels

RACR-T

Remote Control Agricultural Scraper Unit - Rear Wheels

BALDAN IMPLEMENTOS AGRÍCOLAS S/A.

CNPJ: 52.311.347/0009-06

Insc. Est.: 441.016.953.110



Scan the QR Code on the identification plate of your device and access this Instruction Manual online.

> BALDAN

ÍNDEX

| | |
|---|--------------|
| 01 - Safety Standards | 4 - 8 |
| 02 - Components..... | 9 |
| Remote Control Agricultural Scraper Unit - Side Wheels (RACR-L) | 9 |
| Remote Control Agricultural Scraper Unit - Rear Wheels (RACR-T) | 10 |
| 03 - Technical Specifications..... | 11 |
| 04 - Mounting..... | 12 |
| Mounting of Wheels..... | 12 |
| 05 - Coupling of the Scraper..... | 12 |
| Coupling of Dual Scraper | 12 |
| Coupling of Scraper (RACR-L) to Tractor..... | 13 |
| Coupling of Scraper (RACR-T) to Tractor..... | 14 |
| 06 - Adjustments and Operations..... | 15 |
| Loading..... | 15 |
| Transport | 15 |
| Unloading..... | 16 |
| 07 - Maintenance..... | 17 |
| Lubrification | 17 |
| Table of Greases and Equivalents | 17 |
| Lubrification Points | 18 - 19 |
| Tractor Oil Level..... | 19 |
| Tire Pressure..... | 19 |
| 08 - Precautions | 20 |
| General Cleaning..... | 20 |
| 09 - Identification | 21 |
| Product Identification | 22 |
| Notes | 23 |
| Certificate..... | 24 |
| Certificate of Warranty | 24 - 32 |

01. SAFETY RULES



THIS ALERT SYMBOL INDICATES IMPORTANT SAFETY NOTES. WHENEVER YOU FIND IT IN THIS MANUAL, READ THE MESSAGE WITH ATTENTION TO AVOID ANY ACCIDENT.



WARNING

- *Read this instruction manual carefully to know the recommended safety rules.*



WARNING

- *Only start the tractor operations, when are you properly accommodated and with the seat belt fasted.*



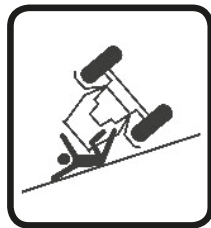
WARNING

- *Never carry people over the tractor or equipment.*



WARNING

- *There are risks of serious injury by tipping when working on slopes.*
- *Never use excessive speed.*



BALDAN

Instruction Manual

RACR-L / RACR-T - 4

01. SAFETY RULES



THIS ALERT SYMBOL INDICATES IMPORTANT SAFETY NOTES. WHENEVER YOU FIND IT IN THIS MANUAL, READ THE MESSAGE WITH ATTENTION TO AVOID ANY ACCIDENT.



WARNING

• Do not work with the tractor if the front be without enough weight to the rear equipment. There is tendency to lift, add weights at front or front wheels.



WARNING

- Before any equipment maintenance, make sure that is properly stopped.
- Avoid getting hit.



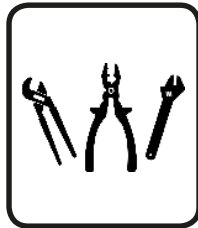
WARNING

- Never weld the wheel mounted with tire, the heat may cause air pressure increase and provoke the explosion of the fire.
- When filling the tire, position yourself besides the tire, never in front of it.
- To fill the tire, always use containment device (filling cage).



WARNING

- Do not perform adjustments while RACR-L/RACR-T is running.
- When performing any service on RACR-L/RACR-T, switch off the tractor first. Use appropriate tools.



01. SAFETY RULES



WARNING

- The hydraulic oil operates pressurized and can cause serious injuries, in case of leakage. Periodically verify the condition of the hoses. If there are any signs of leakage, replace them immediately.
- Before connecting or disconnecting hydraulic hoses, release the pressure from the system, activating the control when the tractor is turned off.



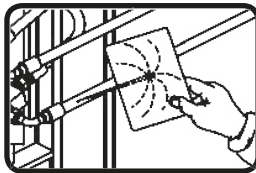
WARNING

- Keep yourself away from the active elements of the machine (Drives), they are sharp and can cause accidents.
- When carrying any service on the disks, use safety gloves on hands.



WARNING

- When searching for a possible leakage on the hoses, use a piece of cardboard or wood, never use your hands.
- Avoid incision of uid in the skin.



WARNING

- Dispose residues inappropriately affects the environment and the ecology since you will be polluting rivers, canals or the soil.
- Inform yourself about the proper way of recycling or disposing residues.

PROTECT THE ENVIRONMENT!



ALCOHOLIC BEVERAGE OR SOME MEDICATIONS MAY CAUSE LOSS OF REFLEXES AND CHANGE THE OPERATOR'S PHYSICAL CONDITIONS. FOR THIS REASON, NEVER OPERATE THIS EQUIPMENT UNDER ANY OF THESE SUBSTANCES.



BALDAN








Instruction Manual










RACR-L / RACR-T - 6

WARNING:



Incorrect handling of this equipment may result in serious or even fatal accidents. Before placing the equipment into operation, carefully read the manual's instructions. Ensure that the person responsible for the operation has been instructed on the correct, safe use of the implement, having read and understood this machine's instruction manual.

- 1 -  When operating with the equipment, prevent people from staying too close to or over the implement.
- 2 -  Use gloves during the mounting or dismounting in the disc sections.
- 3 -  Relieve the pressure of the circuit when switching the hydraulic hoses on or off.
- 4 -  Periodically check the state of conservation of the hoses. Immediately replace it in the case of leaks because the oil operates at high pressure and can cause serious injuries.
- 5 -  Do not use very loose clothing as it can get caught on the equipment.
- 6 -  When activating the tractor engine, be properly seated on the operator seat and have complete knowledge of the correct and safe handling of the tractor as well as the equipment. Always keep the gear stick in the neutral position, switch off the power take-off control gearing and place the hydraulic controls in the neutral position.
- 7 -  Do not start the tractor engine in a closed setting without suitable ventilation because the exhaust gases are dangerous to health.

- 8 -  When maneuvering the tractor to the coupler of the equipment, make sure there is enough space and no one too close to it, always maneuver in reduced speed and be prepared to brake in an emergency.
- 9 -  Do not make adjustments with the equipment in operation.
- 10 -  When working on sloped lands, proceed carefully, always maintaining the necessary stability. In the case of misbalance, reduce the speed, turn the wheels of the tractor towards the slope side of the land and never raise the equipment.
- 11 -  Always drive the tractor at speeds compatible with safety especially in works on uneven lands or slopes; always keep the tractor coupled.
- 12 -  When driving the tractors on streets, keep the brake pedals interconnected.
- 13 -  Do not work with the tractor if the front is light. Add weights to the front or front wheels in case it may be raised.
- 14 -  When leaving the tractor, put the brake handle in the neutral position and use the parking brake. Do not leave the equipment coupled to the tractor with the hydraulic system in the raised position.
- 15 -  Alcoholic drinks or some drugs may cause loss of reflexes and change the physical conditions of the operator. Therefore, never operate this equipment when under the influence of these substances.
- 16 -  Read or explain all the procedure above to the user that cannot read.

REMOTE CONTROL AGRICULTURAL SCRAPER UNIT - SIDE WHEELS (RACR-L)

02-COMPONENTS

- 1 - Frame
- 2 - Hydraulic Box
- 4 - Complete Wheel
- 5 - Wheel hub
- 6 - Oil Distributor
- 7 - Hoses
- 8 - Coupling Shackle

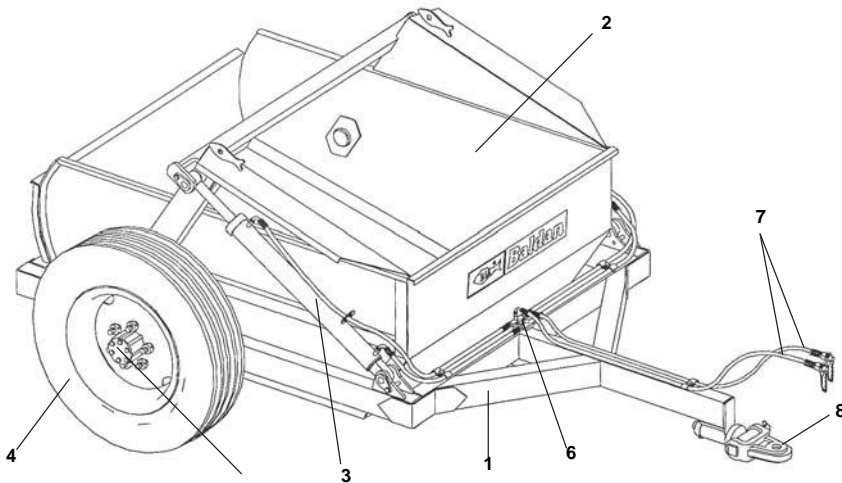


FIGURE 1

REMOTE CONTROL AGRICULTURAL SCRAPER UNIT - REAR WHEELS (RACR-T)

02 - COMPONENTS

- 1 - Frame
- 2 - Box
- 3 - Hydraulic Piston
- 4 - Complete Wheel
- 5 - Wheel Hub
- 6 - Articulation Hub
- 7 - Oil Distributor
- 8 - Hoses
- 9 - Coupling Bar
- 10 - Mudguards (Optional)

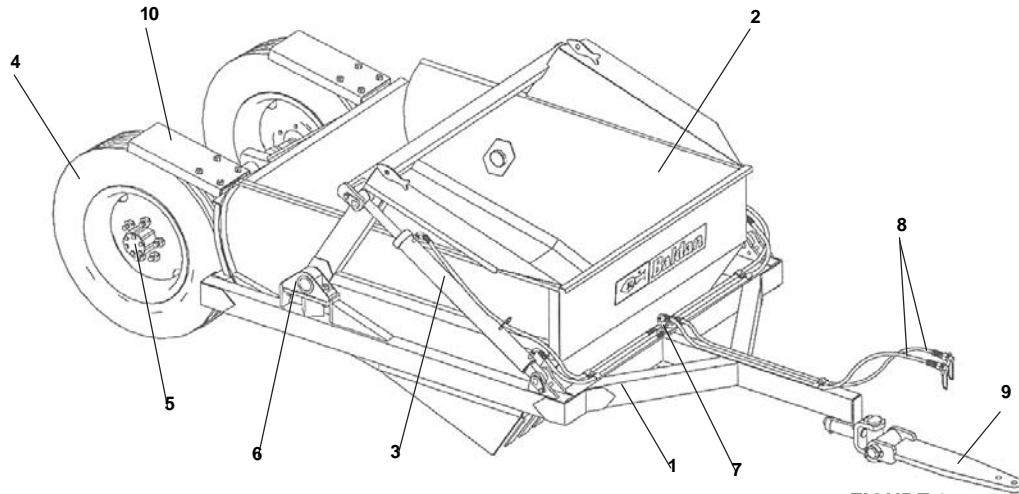


FIGURE 2

03 - TECHNICAL SPECIFICATIONS

| Model | Capacity | | Approx. Weight (Kg) | Tractor Power (HP) |
|--------------------|------------------------|---------------------------|------------------------|-----------------------|
| | Rasa (m ³) | Maximum (m ³) | | |
| RACR 1700 | 1,70 | 1,95 | 1200 | 70 - 85 |
| RACR 3100 | 3,10 | 3,70 | 1700 | 90 - 112 |
| RACR-D 3400 | 3,40 | 3,90 | 2400 | 70 - 85 |
| RACR-D 6200 | 6,20 | 7,40 | 3400 | 90 - 112 |

Cutting width 950 mm
 Ground wheels 9.00 x 20
 Working width:
 - RACR 1700 / RACR-D 3400 100 mm
 - RACR 3100 / RACR-D 6200 150 mm

| Model | Capacity | | Approx. Weight (Kg) | Tractor Power (HP) |
|--------------------|------------------------|---------------------------|------------------------|-----------------------|
| | Rasa (m ³) | Maximum (m ³) | | |
| RACR-T 3100 | 3,10 | 3,70 | 1760 | 110 - 140 |
| RACR-T 6200 | 6,20 | 7,40 | 3520 | 110 - 140 |

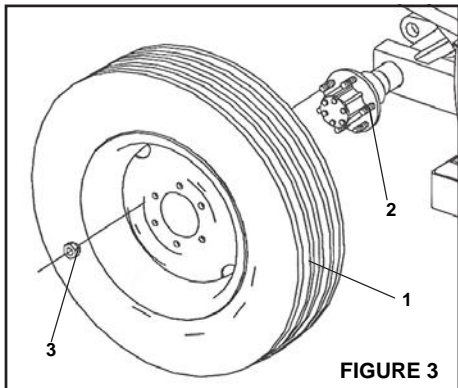
Cutting width 1630 mm
 Ground wheels 9.00 x 20
 Working width:
 - RACR-T 3100 150 mm
 - RACR-T 6200 150 mm

04 - MOUNTING

MOUNTING OF WHEELS (FIGURE 3)

1 - The scraper leaves the factory semi-mounted, only remaining to mount the wheels.

2 - Mount the wheels (1), in the hub (2), securing them with the nuts (3).

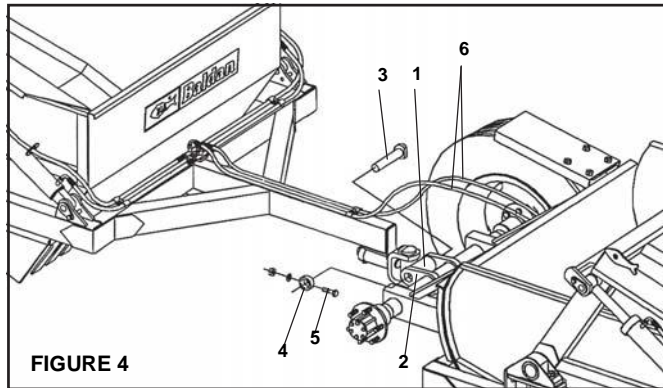


05 - COUPLING OF THE SCRAPER

COUPLING OF DUAL SCRAPER (FIGURE 4)

1 - Couple the coupler (1) to the rear extension (2) of the front scraper, securing with the pin (3), bushing (4) and bolt (5).

2 - Connect the hydraulic hoses (6) to the rear quick coupling system of the scraper.



COUPLING OF SCRAPER (RACR) TO TRACTOR (FIGURE 5)

3 – Before coupling the scraper (RACR) to the tractor, check if it is prepared for operation as follows:

- Check if it is equipped with the set of front counterweights;
- Place weights on the wheels, as specified in the tractor's manual;

4 – To couple the scraper to the tractor drawbar, first couple the hoses (1) to the quick coupling system of the tractor.

5 – Before switching the hydraulic hoses on or off, stop the engine and relieve the pressure of the circuit, completely activating the control lever. Make sure no one is close to the area of equipment movement when releasing the pressure of the system.

6 – After coupling the hoses, operate the tractor gradually activating the pistons to raise the frame to the exact height of the drawbar of the tractor. Couple the shackle (2) to the drawbar of the tractor using the pin (3).

7 - After coupling the scraper, look for a safe place of easy access and always use reduced gear with low speed.

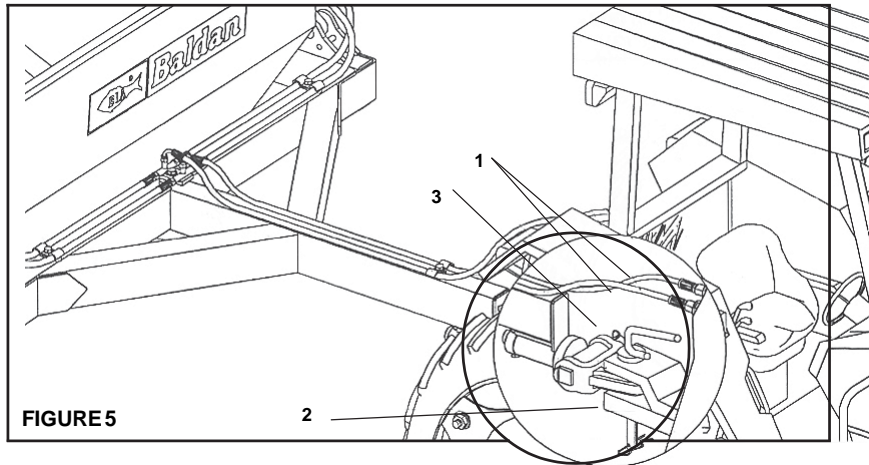


FIGURE 5

COUPLING OF SCRAPER (RACRT) TO TRACTOR (FIGURE 6)

8 – before coupling the scraper (RACRT) to the tractor, remove the drawbar from it.

9 – Insert the coupling bar (1) in the place where the original coupling bar of the tractor was removed. Then couple the hoses (2) to the quick coupling system of the tractor.

10 – Before switching the hydraulic hoses on or off, stop the engine and relieve the pressure of the circuit, completely activating the control lever. Make sure no one is close to the area of equipment movement when releasing the pressure of the system.

11 – After coupling the hoses, operate the tractor gradually activating the pistons to raise the frame to the exact height of the drawbar. Couple the bushing of the shackle (3) to the drawbar through the pin (4), locking with the bushing and bolt.

12 - After coupling the scraper, look for a safe place of easy access and always use reduced gear with low speed.

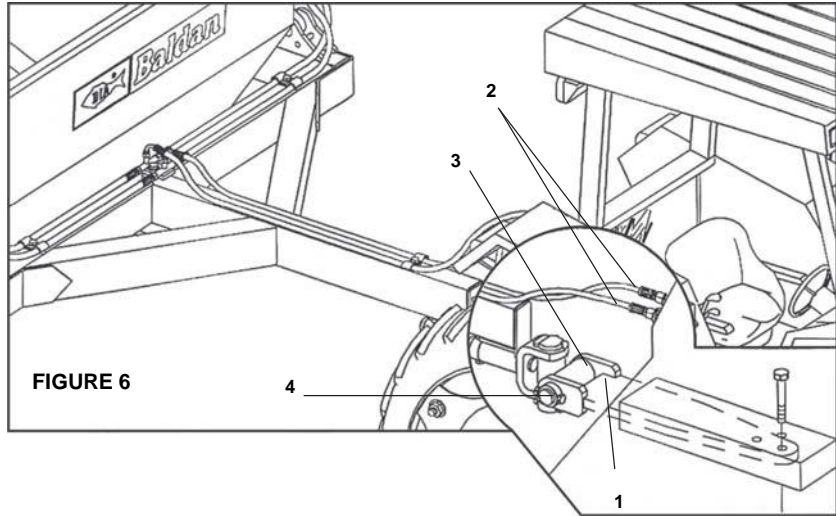


FIGURE 6

06 - ADJUSTMENTS AND OPERATIONS

LOADING (FIGURE 7)

- 1 – The loading of the scraper is performed by activating the hydraulic system, which presses the blade to the ground and makes the material to be loaded to enter the box.
- 2 – When operating with the dual scraper, first load the front box then the rear box.



NOTE

During the loading operation, always keep the engine running and in gear compatible with the indications in the tractor's manual.

TRANSPORT

- 3 – The transport speed should be compatible with the working conditions.
- 4 – When transporting the loaded scraper, avoid changing gears during climbs to prevent impacts at the ends of the tractor shaft. Put the gear necessary for climbing the slope before making the climb.

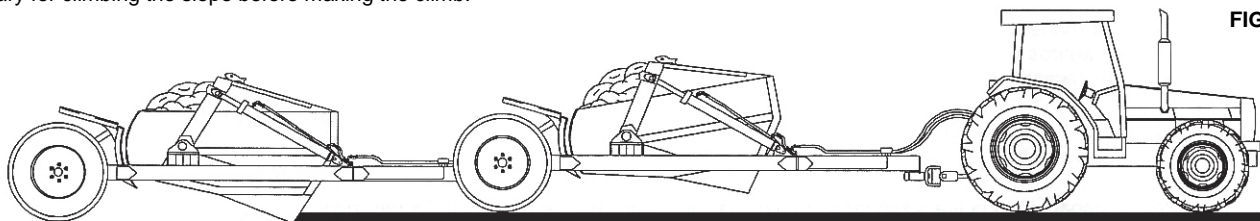


FIGURE 7



UNLOADING (FIGURE 8)

- 5 – The scraper is unloaded through the back of the box, tipping it through the hydraulic piston to an angle of 90°.
- 6 – Unload the scraper at a gear compatible with the conditions of the land.
- 7 – After the unloading operation, return the box to its transport position.
- 8 – When unloading in very steep lands, avoid completely tipping the box.
- 9 – When unloading at curves, reduce the speed.

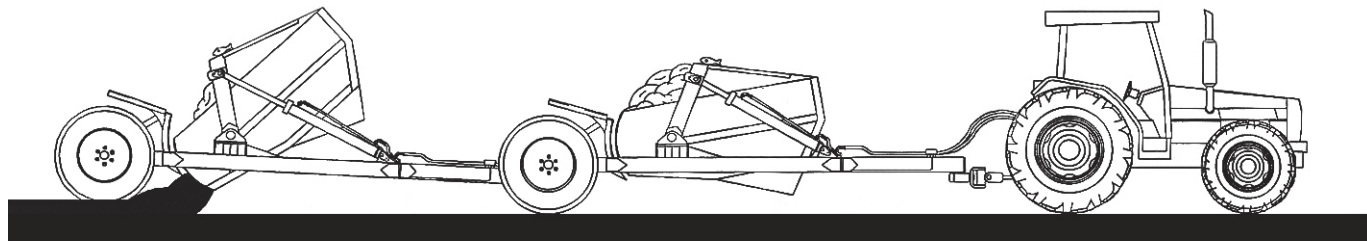


FIGURE 8

07 - MAINTENANCE


LUBRICATION

- 1 - Lubrication is indispensable for a good performance and higher durability of the moving parts of the scraper, which helps save maintenance costs.
- 2 - Before executing the operation, carefully lubricate all greasers, always observing the lubrication intervals in the pages below.
- 3 - Check the quality of the lubricant in relation to its efficiency and purity, avoiding the use of products contaminated with water, soil and other agents.

TABLE OF GREASES AND EQUIVALENTS (TABLE 2)

| MANUFACTURER | TYPE OF GREASE RECOMMENDED |
|--------------|---|
| PETROBRÁS | LUBRAX GMA 2 |
| ATLANTIC | LITHOLINE MP 2 |
| IPIRANGA | SUPER GRAXA IPIRANGA IPIRANGA SUPER GRAXA 2 IPIFLEX 2 |
| CASTROL | LM 2 |
| MOBIL | MOBILGREASE MP 77 |
| TEXACO | MARFAK 2 AGROTEX 2 |

| | |
|---------|---|
| SHELL | RETINAX A ALVANIA EP 2 |
| ESSO | MULTIPURPOSE GREASE H LITHOLINE MP 2 |
| BARDAHL | MAXLUB APG 2 EP |

 **IMPORTANT**

In the case of other lubricants and/or brands of equivalent greases that are not on this table, consult the technical manual of the lubricant manufacturer.

TABLE 2

LUBRICATION POINTS

4 – Lubricate every 10 hours of work.

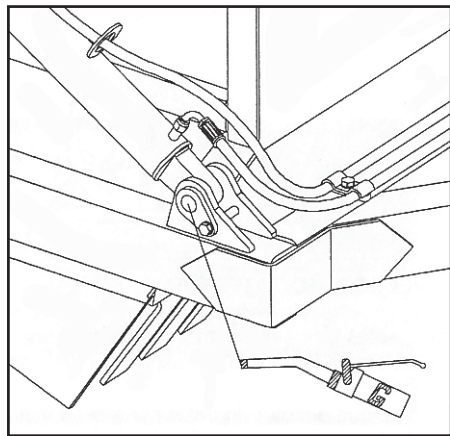
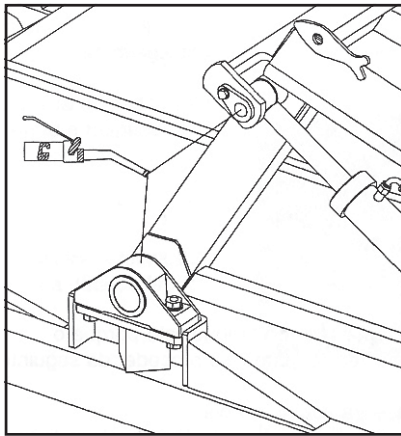
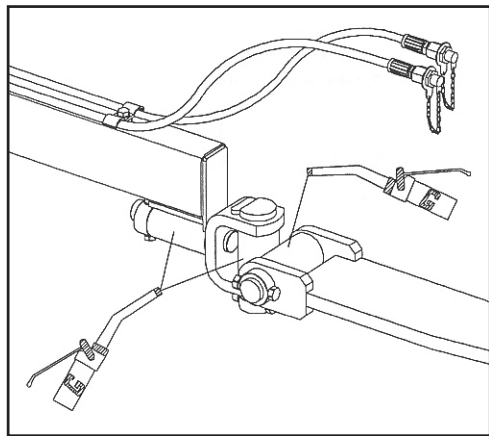
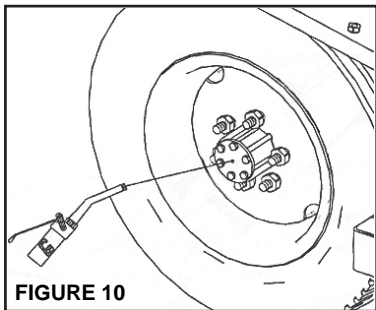


FIGURE 9

5 – Lubricate every 60 hours of work.



TRACTOR OIL LEVEL

6 – Before operating the scraper, replace the oil in the tank because the hydraulic system of the scraper should be supplied, and in order to do so proceed as follows:

- Switch the engine of the tractor on for a few minutes to heat up the oil.

- Pull the lever in both directions several times for the oil to supply the entire circuit.
- Only use oil recommended by the manufacturer of the tractor.

TIRE PRESSURE (FIGURE 11)

7 – The tires must always be calibrated correctly, avoiding premature wear due to excess or lack of pressure.

8 – Calibration of tires 9.00 x 20 should be 50 lb/inch² for each one.

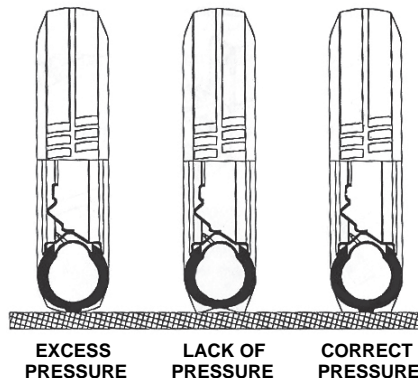


FIGURE 11

08 - PRECAUTIONS

- 1 – Check the conditions of all the pins and bolts before using the scraper.
- 2 – Retighten the bolts and nuts after 8 hours of work.
- 3 – The displacement speed must be carefully controlled according to the conditions of the land.
- 4 – Only local conditions can determine the best way of operating the scrapers.
- 5 – Use the suitable methods and tools to mount or dismount any part of the scraper.
- 6 – Always check if the parts do not present wears. If replacement is required, **always demand for original Baldan parts.**

GENERAL CLEANING

- Due to the corrosive action of the fertilizers, it is recommended to perform a general cleaning of the scraper before storing it, in order to conserve and increase the useful life of your equipment. For such, proceed as follows:
 - 1 – Use the suitable methods and tools to mount or dismount any part of the scraper.
 - 2 – First perform a general cleaning, removing all residues of the product inside and outside the scraper. Then wash it completely.
 - 3 – After, check if the paint is not worn, otherwise apply a general coat on all the worn parts.
 - 4 – Completely lubricate the scraper and check all the moving parts for wear or looseness and perform the necessary adjustments or replacement of the parts, leaving the equipment ready for the next operation.
 - 5 – After all the maintenance services, keep your scraper in a duly supported, safe and suitable place.



WARNING

- Do not use chemical detergents to wash the scraper because they can damage the painting.

09 - IDENTIFICATION

- In order to refer parts catalogues or apply technical support from Baldan, always indicate model (1), serial number (2), manufacture date (3) located on the identification tag.

ALWAYS REQUIRE BALDAN ORIGINAL PARTS

| | | | |
|--|-----------------------------|---|----|
|  | |  | |
| BALDAN IMPLEMENTOS AGRÍCOLAS S/A. AV. BALDAN, 1500 NOVA MATÃO CEP 15.993-900 MATÃO-SP BRASIL FONE: (16) 3221-6500 CNPJ: 52.311.347/0009-06 CREA/SP 0170977 | | | |
| 01 | Modelo / Model | Date / Date | 03 |
| 02 | Nº de Série / Serial Number | Tipo / Type | |
| Capacidade / Load Capacity | | Peso / Weight | |



PUBLICATIONS

Code: 6055010223-7

CPT: RACR11717



WARNING

The drawings in this instructions manual are for illustrative purposes only. To enable a better overview and detailed instructions, on some drawings in this manual, safety devices (covers, shields, etc..) were removed. Never operate the agricultural wagon without these devices.



CONTACT

If you have questions, never operate the RACR-L/ RACR-T see the post sale.

Phone: 0800-152577

e-mail: posvenda@baldan.com.br

PRODUCT IDENTIFICATION

- Do the identification below to always have the properly informations about your equipment life time.

Owner: _____

Dealer: _____

Farm: _____

City: _____ *Country:* _____

Model: _____

Warranty certified number: _____ *Serial number:* _____

Purchase date: _____ / _____ / _____ *Invoice. Nr:* _____

[illegible]

CERTIFICATE OF WARRANTY

- 01 - **BALDAN IMPLEMENTOS AGRÍCOLAS S/A**, guarantee the normal operation of the product for a 6 (six) months period dated from the dealers's bill of sale to the first final customer.
- 02 - During this period, **Baldan** compromise itself to repair the material or manufacturing defects, but the labour, the freight and other expenses are the dealer's responsibility.
- 03 - At the guarantee period, all the request and replacement of any defective part must be made to the dealer of the region, which will send the defective part for analysis at **Baldan**.
- 04 - When this procedure won't be possible and the dealer couldn't have the ability to solve the problem, the dealer can ask for **Baldan's Technical Assistance** using the specific form delivered to them.
- 05 - After the analysis of the items replaced by **Baldan Technical Assistance** and if we conclude that it wasn't a guarantee problem, then the dealer will be the responsible for all costs related to the replacement; as well as material expenses, travel including accommodation and meals, also the accessories, lubricant used or any other expenses after having called the Technical Assistance. And, withal, the company Baldan is authorized to issue the billing in name of the respective reseller.
- 06 - Any repair made to the product which is in warranty period by the dealer, will only be authorized by Baldan after budget previous presentation describing pieces and labour to be accomplished.
- 07 - It is out of this term the product which has repairs or modifications not made by dealers from Baldan's network, as well as pieces applications or not authentic components to the product by the user.
- 08 - This certificate of guarantee will become invalid when notice that the damage or defect is the result of incorrect use of the product, of instructions non-observance or operator's inexperience.

- 09 - It's stipulated that this guarantee don't cover tires, polyethylene deposits, universal joints, hydraulic components, etc, wich equipments are guarantee by their manufacturers.
- 10 - The material or manufacture defects, object of this certificate of guarantee, will not be, by any hypotesis, reason for cancellation of the contract of sale, or indemnity of any kind.
- 11 - For a warranty solicitation to the distributor, you have to proceed in the following manner:
- 12 - Send the technical informe detailed telling the problem (technical assistance request form to the client), you can find it send us an email to **after-sales@baldan.com.br** or acessing our website.
- 13 - If it's possible send films and photos from the requested spare parts.
- 14 - To point at the form: serial number, manufacture year, etc, that is, all information asked at the form. The damage spare parts should be available for analysis of the the after sales department in a future visit (in case of requested).
- 15 - **Baldan** keeps the right of changing and or improve the technical characteristics of its products, without notice and without the obligation of act like this way with its previously manufactured products.

INSPECTION AND DELIVERY CERTIFICATE

- **SERVICE BEFORE THE DELIVERY:** This equipment was very carefully prepared by the dealer's organization, inspected in all its parts in agreement with the manufacture's prescription.
- **DELIVERY SERVICE:** The user was informed about the current guarantee terms and instructed about maintenance care and utilization.
- I confirm that I was informed about the current guarantee terms and instructed about the correct utilization and maintenance of this product.

Product: _____ *Serial number:* _____

Date: _____ *Bill of sale:* _____ *Store:* _____

City: _____ *State:* _____ *Zip code:* _____

Owner: _____ *Phone:* _____

Adress: _____ *Number:* _____

City: _____ *State:* _____

E-mail: _____ *Date of sale:* _____

INSPECTION AND DELIVERY CERTIFICATE

- **SERVICE BEFORE THE DELIVERY:** This equipment was very carefully prepared by the dealer's organization, inspected in all its parts in agreement with the manufacture's prescription.
- **DELIVERY SERVICE:** The user was informed about the current guarantee terms and instructed about maintenance care and utilization.
- I confirm that I was informed about the current guarantee terms and instructed about the correct utilization and maintenance of this product.

Product: _____ *Serial number:* _____

Date: _____ *Bill of sale:* _____ *Store:* _____

City: _____ *State:* _____ *Zip code:* _____

Owner: _____ *Phone:* _____

Adress: _____ *Number:* _____

City: _____ *State:* _____

E-mail: _____ *Date of sale:* _____

INSPECTION AND DELIVERY CERTIFICATE

- **SERVICE BEFORE THE DELIVERY:** This equipment was very carefully prepared by the dealer's organization, inspected in all its parts in agreement with the manufacture's prescription.
- **DELIVERY SERVICE:** The user was informed about the current guarantee terms and instructed about maintenance care and utilization.
- I confirm that I was informed about the current guarantee terms and instructed about the correct utilization and maintenance of this product.

Product: _____ Serial number: _____

Date: _____ Bill of sale: _____ Store: _____

City: _____ State: _____ Zip code: _____

Owner: _____ Phone: _____

Address: _____ Number: _____

City: _____ State: _____

E-mail: _____ Date of sale: _____

3ª Page - Manufacturer

Please send this filled copy to Baldan, until 15 days after the purchase.

Signature / Store's stamp _____



Avenida Baldan, 1500
Nova Matão
15.993-900
Matão/SP - Brasil
sac@baldan.com.br
export@baldan.com.br

+55 16 3221 6500
baldan.com.br